

Basement: Domino

FIXATION WITH RAILS (H SHAPE)

Aginode Ref: 10236785

C-rails length 800mm (delivered unassembled) for quick and easy fixing of Domino modules. Wall fixing screws not supplied (wall mounting kit for Domino could be used)

The Domino basement boxes range has been especially designed for FTTH networks, to provide a modular solution for node interconnection between the external network and the building distribution network.

Stacking several Domino boxes enables to liaise between several operator networks and each subscriber.

The product range

The range is characterized by a universal housing, and various adaptable internal organisations according to the network configuration.

Module height	Adapters maximum number	Splitters maximum number
100mm	24xSC	6 splitters SOD
165mm	48xSC	12 splitters SOD
210mm	72xSC	6+12 splitters SOD

A unique organizer performs all the cable termination features (splicing, splitting and/or patching, with overlengths management), depending on its cassettes layout.

An integrated swiveling tray allows the management of patchcords overlengths.

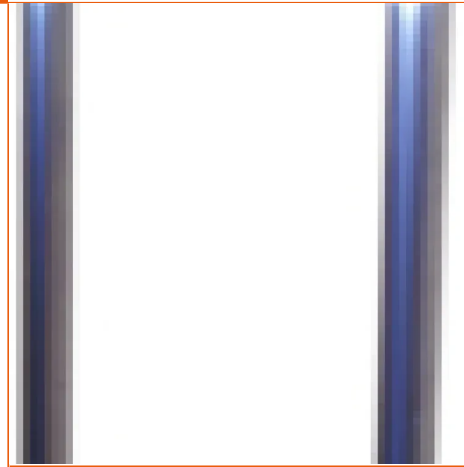
For standby fibres management, a version called "Storage" is also available.

Accessibility

The cable crimping is made outside of the box, and then the cable and its crimping plate are fixed in the box.

Quick door-dismantling and front patching enable easy access and identification for the connectors.

The product operation does not need any additional volume



STANDARDS

Aginode specification
Orange/France Telecom

All drawings, designs, specifications, plans and particulars of weights, size and dimensions contained in the technical or commercial documentation of Aginode is indicative only and shall not be binding on Aginode or be treated as constituting a representation on the part of Aginode.

after the product installation. Thus, its accessibility is guaranteed whatever the evolution of the installation environment.

Interconnection and security

Domino is fully compatible with equivalent modules on the market.

2 communication chimneys allow the fibres to go from a module to another one in the same stack.

The door is secured with a standard 8mm triangular key. The standard organizer has the same security system.

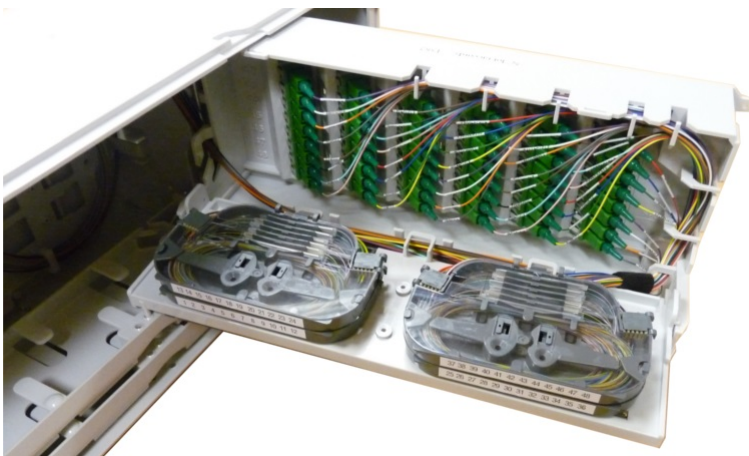
Domino Basement box

With front patching and swivelling tray to manage patchcords overlentghs, Domino basement boxes are easy to use without "spaghetti" issues (melting, node) on the right column.

Domino stack for Basement box use



Domino Splicing & Patching: version with splicing cassettes for G657 fibres for connection to riser or point to point



All drawings, designs, specifications, plans and particulars of weights, size and dimensions contained in the technical or commercial documentation of Aginode is indicative only and shall not be binding on Aginode or be treated as constituting a representation on the part of Aginode.

Domino Splitting & Patching: version dedicated for use of splitter (SOD type) in case of point to multipoints/GPON network



Domino Splitting & Patching: view of cassette to splice trunks of splitters (compatible G652 fibre, up to 12 splices)



Domino Storage: version dedicated to use and storage of a preterminated riser cable



All drawings, designs, specifications, plans and particulars of weights, size and dimensions contained in the technical or commercial documentation of Aginode is indicative only and shall not be binding on Aginode or be treated as constituting a representation on the part of Aginode.

Fixation with rails (H shape)

Characteristics

结构特性

颜色	浅灰 RAL 7035
电缆引入线	从左侧
材料	聚碳酸酯

尺寸特性

深度	150 mm
宽度	450 mm
External diameter of the cable "D", range	6...14 mm

机械特性

IK Rating	7
-----------	---

使用特性

操作温度, 范围	-25...70 °C
适配器	SC/APC
耐火	UL 94 V0
端口数	3
最小弯曲半径 - 静态	15 mm
Locking system	Triangle
抗UV	是
包装	箱
防水	IP 41

文件

Domino Implementation Manual (french) pdf — 12.7 MB [下载](#) ↓