

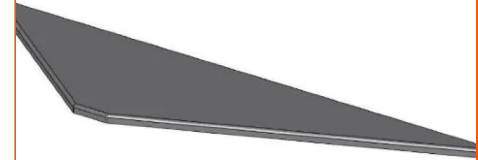
# Patch Guides, Blank Panels & Cable Management

## ANGLED PANEL COVER BLACK

**Aginode Ref:** N521.673

Cover Plate

The Cover Plate is used to close the triangular gap formed at the top of a stack of LANmark or LANsense Angled Panels to prevent items falling behind the panels and to enhance the appearance of the finished installation.



### STANDARDS

ISO/IEC 11801

# Angled Panel Cover Black

## Characteristics

### 结构特性

颜色

黑

*All drawings, designs, specifications, plans and particulars of weights, size and dimensions contained in the technical or commercial documentation of Aginode is indicative only and shall not be binding on Aginode or be treated as constituting a representation on the part of Aginode.*