

#smartconnection



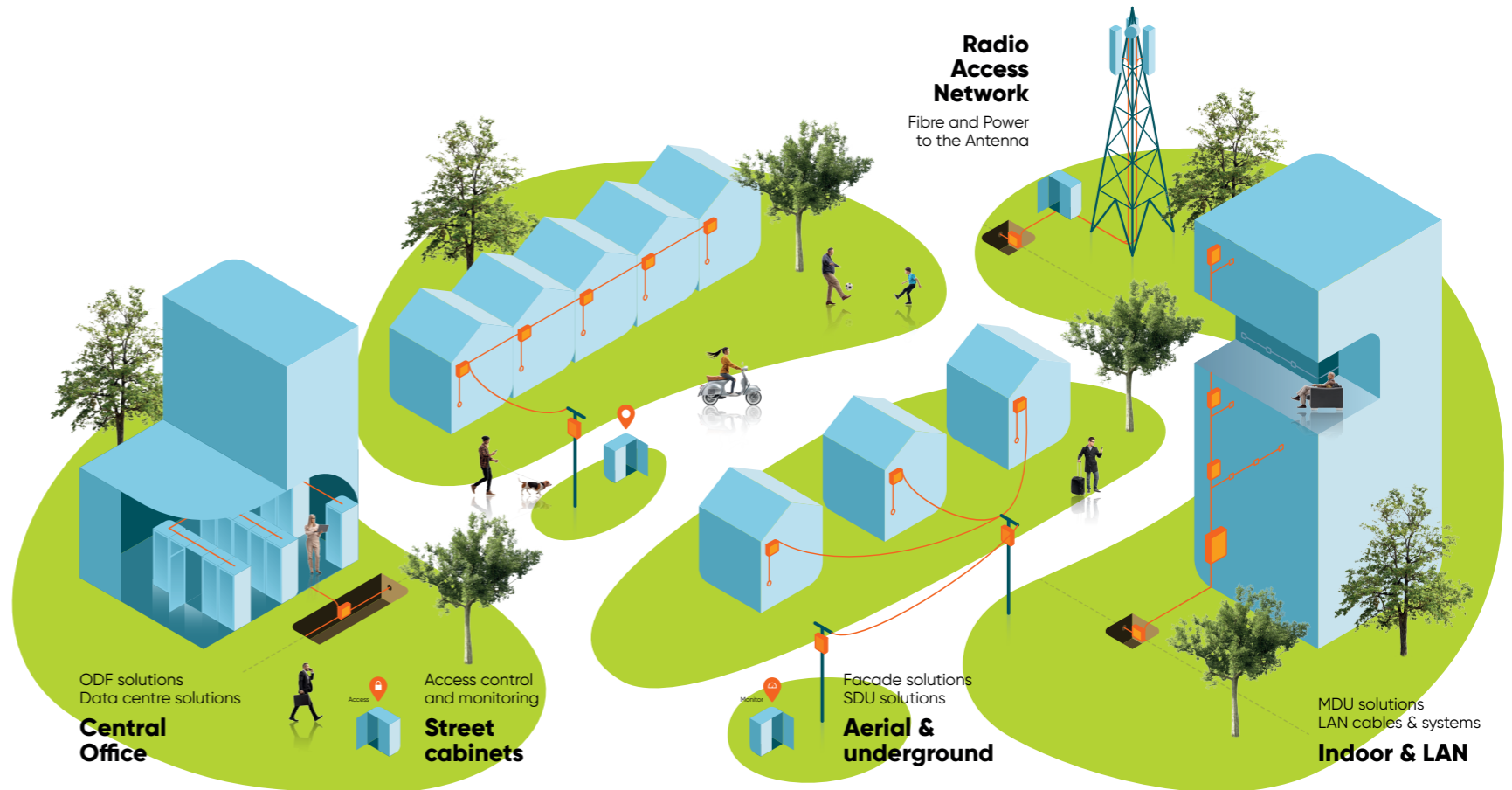
# LANactive Manager

[www.aginode.net](http://www.aginode.net)



# Table of content

- #smartconnections with Aginode ..... 3
- Controller & Management Software – What’s new? . 4
- Application ..... 6
- Controller Features ..... 8
  - Zero-Touch Configuration ..... 8
  - Web based user interface ..... 8
  - Positioning ..... 8
  - Dashboard ..... 8
- Feature Availability ..... 10
- Ordering Information..... 11



## #smartconnections with Aginode

Aginode, formerly Nexans Telecom Systems, designs & manufactures connectivity solutions for digital networks in FTTx, Mobile, LAN & Data Centre markets. Our goal: to enable the infrastructure which delivers applications that make lives more connected, productive, and enjoyable; today and in future.

Our international teams have over 30 years proven track record of developing, implementing, and servicing advanced infrastructure solutions, with Aginode’s diverse product range under our brand names:

**LAN & Data Centres:** LANmark™, LANsense™, LANactive

**FTTx & Mobile:** XPLOER™, BRIGHTBOX™, INFRABIRD™, UPSKY™

With a state-of-the-art industrial footprint and recognised technological know-how in Europe, Middle East, North-West Africa, and Asia, Aginode is a key player in digitalisation and connectivity.



# Controller & Management Software

The Aginode Management Software offers a simple, comfortable and secure solution for configuring, managing and monitoring Aginode LANactive switches. Both FTTO switches (e.g. XGigaSwitch V6) and switches for harsh environments (e.g. iGigaSwitch 10XX/12xx/16XX) can be managed via the Aginode Manager.

## Different installation options

The Aginode Manager can be installed as a stand-alone version and set up as a desktop application for one or more users. This installation is ideal for on-site network technicians who are connected locally. Client Controller is a client-server software architecture optimised for large FTTO network installations. It enables simultaneous access from different clients via a web interface and supports the fully automated configuration process Zero-Touch Configuration.

**NEW**

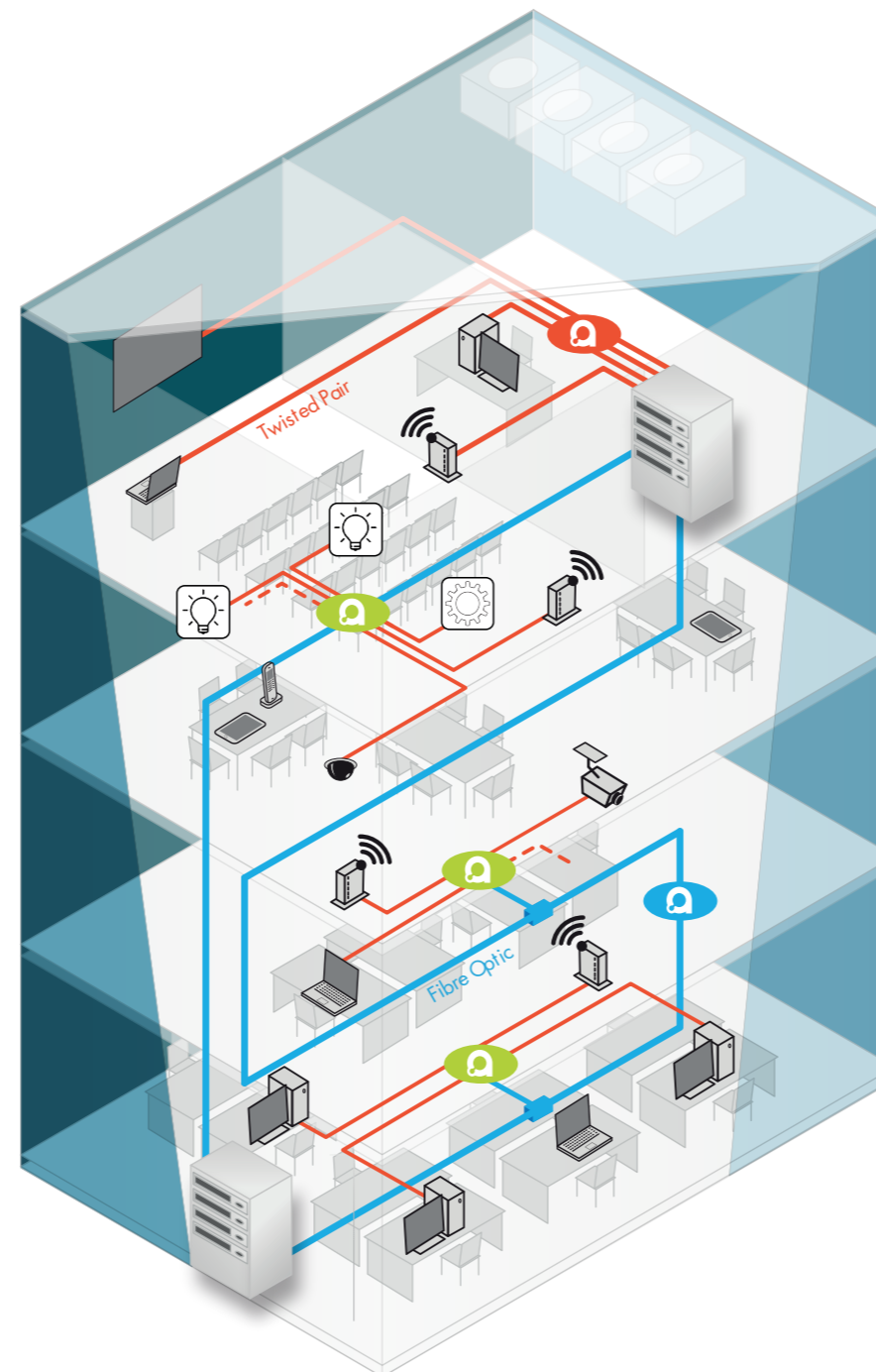
## Extended zero-touch function

Aginode LANactive Zero Touch Configuration is part of the LANactive Manager in combination with the controller license and is a contemporary way of designing, building and operating networks with minimum effort. The use of LANactive switch.

**NEW**

## Web-based user interface

The web-based user access enables technicians and administrators to connect to the LANactive Manager from any end device via a standard browser.



**NEW**

## Positioning

Positioning allows the user to place devices on a world map or custom building layouts.

**NEW**

## Dashboard

The dashboard provides a comprehensive overview of critical network parameters, including Power over Ethernet (PoE) consumption values, temperature behavior and switch availability.

## Your benefits when upgrading to the Aginode LANactive Manager

- Supports the full range of functions of the latest firmware V8.XX
- Part of upcoming security audits
- State of the art management system
- Manage Aginode devices with maximum efficiency

# Application

Aginode LANactive Manager is a centralized software solution to configure, manage and supervise the current hardware series of Aginode LANactive switches. The software provides an easy and comfortable way for the operation of all LANactive FTTO and LANactive Industry switches. In case of troubleshooting LANactive Manager provides a extensive setup of information and tools to decrease the debugging time.

## Stand-Alone and Controller Version

Aginode LANactive Manager is available in two software packages: as local desktop installation for single user or as central server application with a web based frontend and multiple and simultaneous user access.

## Zero-Touch Configuration

Aginode LANactive Zero Zero-Touch Configuration is part of the LANactive Manager in combination with the controller license and is a contemporary way of designing, building and operating networks with minimum effort. The use of LANactive switches in combination with the LANactive Manager ensures networks are fully automated, flexible and scalable. After connecting a Aginode LANactive switch to a network segment, the switch will automatically link to its controller to receive provisioned firmware and configuration.

## Fully Automated Operation

Next to the Zero Zero-Touch Configuration feature, LANactive Manager provides several fully automated tasks e.g. a scheduled configuration or firmware update for all or dedicated devices, a Master Master-Configuration option or Autodiscovery functionality.

## Increased Security

LANactive Manager uses only encrypted and secured communication with the connected LANactive switches to increase the security level and avoid unwanted access to data.

## Test and Evaluation Version

LANactive Manager can be downloaded free of charge for evaluation purposes. Compared to the licensed version, the following restrictions apply:

- Delayed starting screen for registration key request
- Maximum five switches can be saved in a database

Besides the evaluation version there is the possibility to get a time limited test key.

## Support Portal

The LANactive Manager documentation can be loaded via help menu as a PDF file or at the Aginode Support Portal.

Please visit Aginode Support Portal at: <https://www.aginode.support>

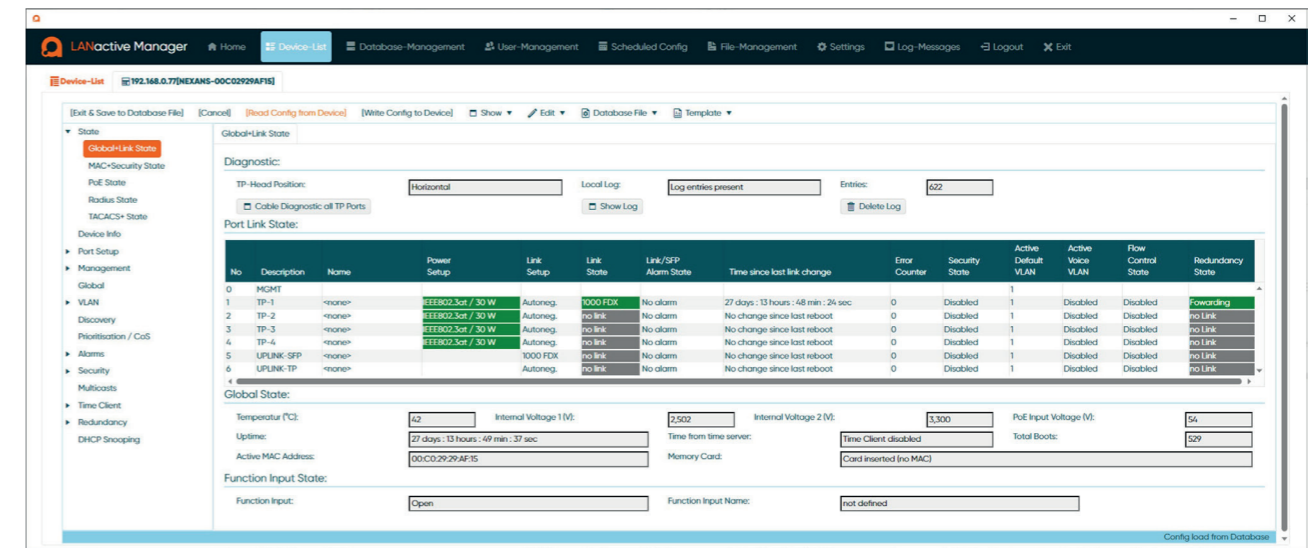


Image 1: Global & Link State

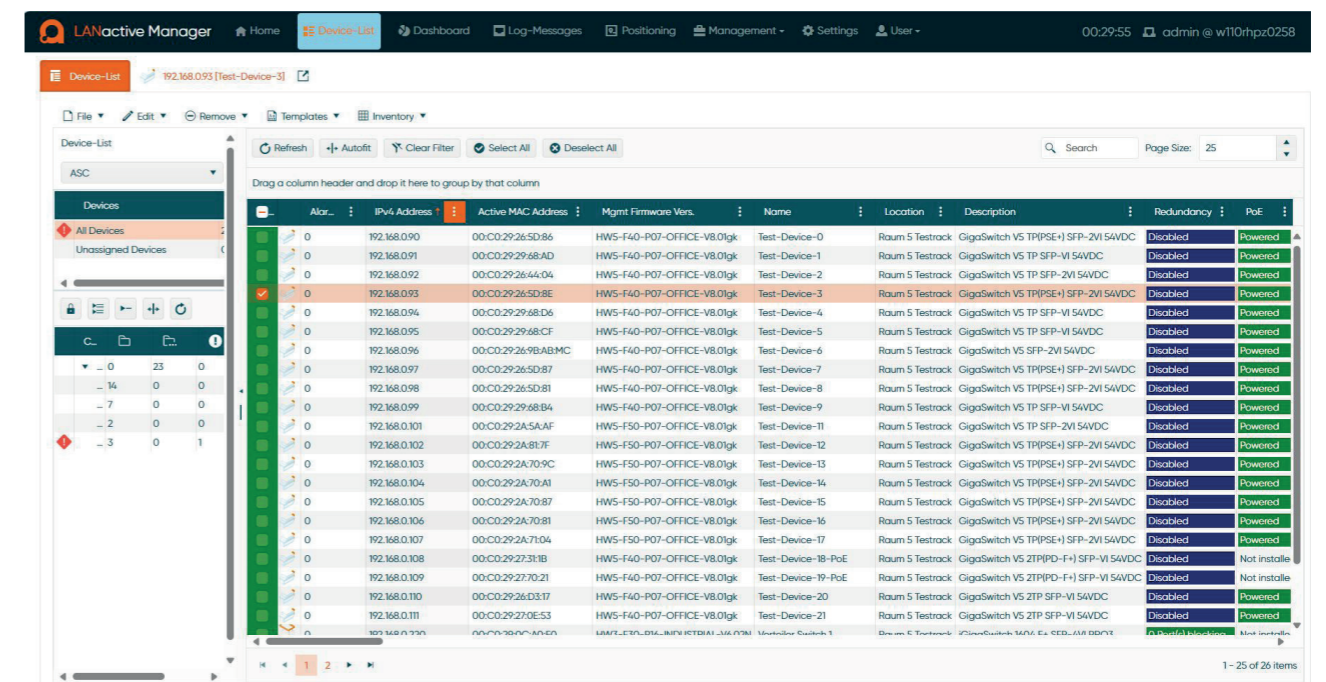


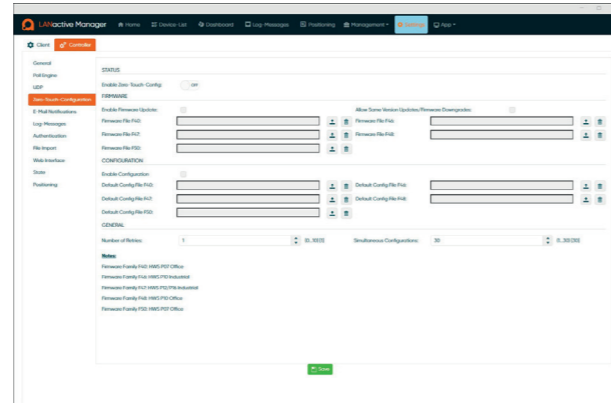
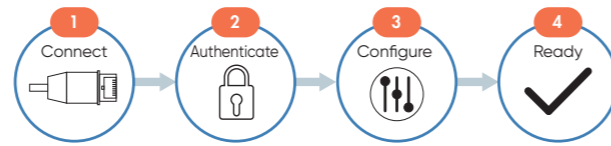
Image 2: Device List

# Controller Features

## Zero-Touch Configuration

Aginode LANActive Zero-Touch Configuration is part of the LANActive Manager in combination with the controller license and is a contemporary way of designing, building and operating networks with minimum effort. The use of LANActive switches in combination with the LANActive Manager ensures networks are fully automated, flexible and scalable.

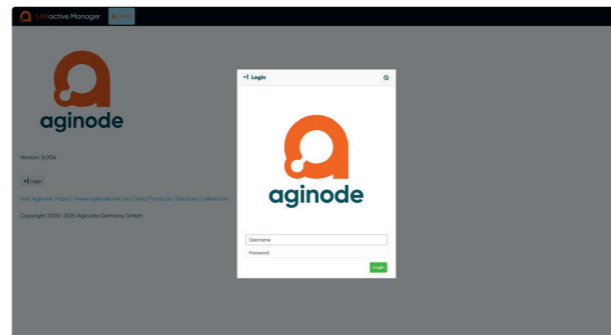
After connecting a Aginode LANActive switch to a network segment, the switch will automatically link to its controller to receive provisioned firmware and configuration.



## Web based user interface

The web based user access allows technicians and administrators to connect from each end device to the LANActive Manager interface using a standard browser. Therefore, the LANActive Manager must be installed as the controller instance including a controller license.

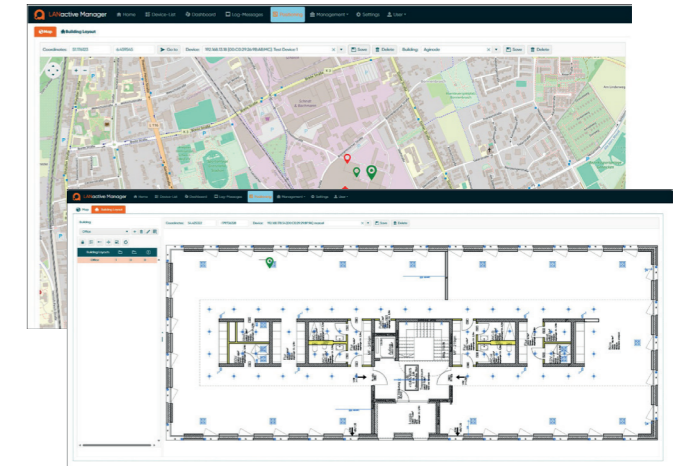
HTTPS can be used to access LANActive Manager. Either the default certificate or your own certificate can be used.



# Controller Features

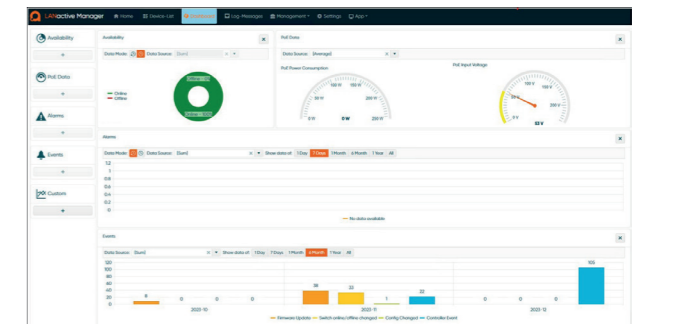
## Positioning

Positioning allows the user to place devices on a world map or custom building layouts. On the map users can add devices, or even locations with a simple mouse click. Longitude and latitude will automatically be set. The Building layouts allows floor plan to be uploaded and devices can be positioned in locations where they are installed.



## Dashboard

The dashboard provides a comprehensive overview of critical network parameters, including Power over Ethernet (PoE) consumption values, temperature behavior and switch availability.



# Feature Availability

Function	Stand-Alone	Controller
Remote configuration of all Aginode LANactive switches	Yes	Yes
Web interface (http and https)	No	Yes
Zero-Touch Configuration support - Fully automated configuration process	No	Yes
Extended device list with individual sorting parameters	Yes	Yes
Extensive remote diagnostic and monitoring	Yes	Yes
Time scheduled configuration and firmware update	No	Yes
Layer-2 and Layer Layer-3 Autodiscovery feature (to search for devices in the network)	Yes	Yes
Master configuration templates	Yes	Yes
History function for old device configuration	Yes	Yes
Comprehensive system logging	Yes	Yes
Dashboard with Network Information	No	Yes
Syslog and SNMP Server	No	Yes
Sophisticated user management with different access levels, roles and user specified device lists	No	Yes
Detailed assignment of user rights up to the port level	No	Yes
Device lists with multiple user access	No	Yes
SQL Database containing all information	No	Yes
Extended import and export function (XML, CSV or Excel format)	Yes	Yes
Client authentication via RADIUS and Active Directory (LDAP)	No	Yes
Positioning in Map and Building	No	Yes
Operating system	Windows only	Windows and Linux

# Ordering Information

## LANactive Manager Controller

Article Number	Description
88643008	LANactive Manager Controller Licence including the right to use 500 nodes including one year licence fee
88643009	LANactive Manager Controller extension packet. Increases the number of manageable nodes by 500
88643010	LANactive Manager Controller extension packet. Increases the number of manageable nodes by 1000
88643011	LANactive Manager Controller extension packet. Increases the number of manageable nodes by 2000
88643012	LANactive Manager Controller licence fee 500 nodes for one year
88643013	LANactive Manager Controller licence fee 1000 nodes for one year
88643014	LANactive Manager Controller licence fee 2000 nodes for one year

## LANactive Manager Stand Alone

Article Number	Description
88643015	LANactive Manager Stand Alone Licence including the right to use 100 nodes including one year licence fee
88643016	LANactive Manager Stand Alone extension packet. Increases the number of manageable nodes by 100
88643017	LANactive Manager Stand Alone extension packet. Increases the number of manageable nodes by 200
88643018	LANactive Manager Stand Alone licence fee 100 nodes for one year
88643019	LANactive Manager Stand Alone licence fee 200 nodes for one year

#smartconnection

Connect via **LinkedIn**



Learn more on **YouTube**



Visit **www.aginode.net**



The screenshot shows the aginode website with a navigation menu: About Aginode, Data Networks, Telecom Infrastruktur, Produkte, Ressourcen, Newroom. The main content area features a large image of a green valley with the text "#smartconnection" and "für FTTH, Mobile, LAN & Redundanzen". A red button at the bottom of the image says "Aginode entdecken... →".

Contact us via  
[info@aginode.net](mailto:info@aginode.net)

[www.aginode.net](http://www.aginode.net)

