

**INSTALLATION GUIDE FOR OPTICAL FIBRE CABLE**  
**PRE-TERMINATED CABLE SUPPLEMENT**

**Table of Contents**

- 1. Foreword ..... 2
- 2. Product references ..... 3
- 3. Pre-Terminated OF cable pulling - general rules..... 4
- 4. LANmark-OF SC/LC Pre-Terminated assemblies fan-outs installation..... 5
  - 4.1. Fan-outs ..... 5
  - 4.2. Pulling part removal procedure..... 6
  - 4.3. Installation process in the patch panel ..... 7
  - 4.4. OF system polarity..... 11
- 5. LANmark-OF MTP/MTP Pre-Terminated assemblies..... 12
  - 5.1. Pulling part removal procedure..... 12
  - 5.2. Installation process in the patch panel ..... 14
  - 5.3. OF system polarity..... 17
- 6. Testing recommendations ..... 17
- 7. Fibre identification ..... 19

**Important Note: Installation is to be performed by qualified service personnel**

## 1. Foreword

This document forms part of a series of documents related to optical fibre installation. Please see below for further information.

This document provides specific information related to **Pre-Terminated** fibre cables.

The General "Installation Guide For Optical Fibre Cable" document provides information related to key topics that need to be followed during installation.

The following guides provide more detailed information on handling requirements for specific cable types:

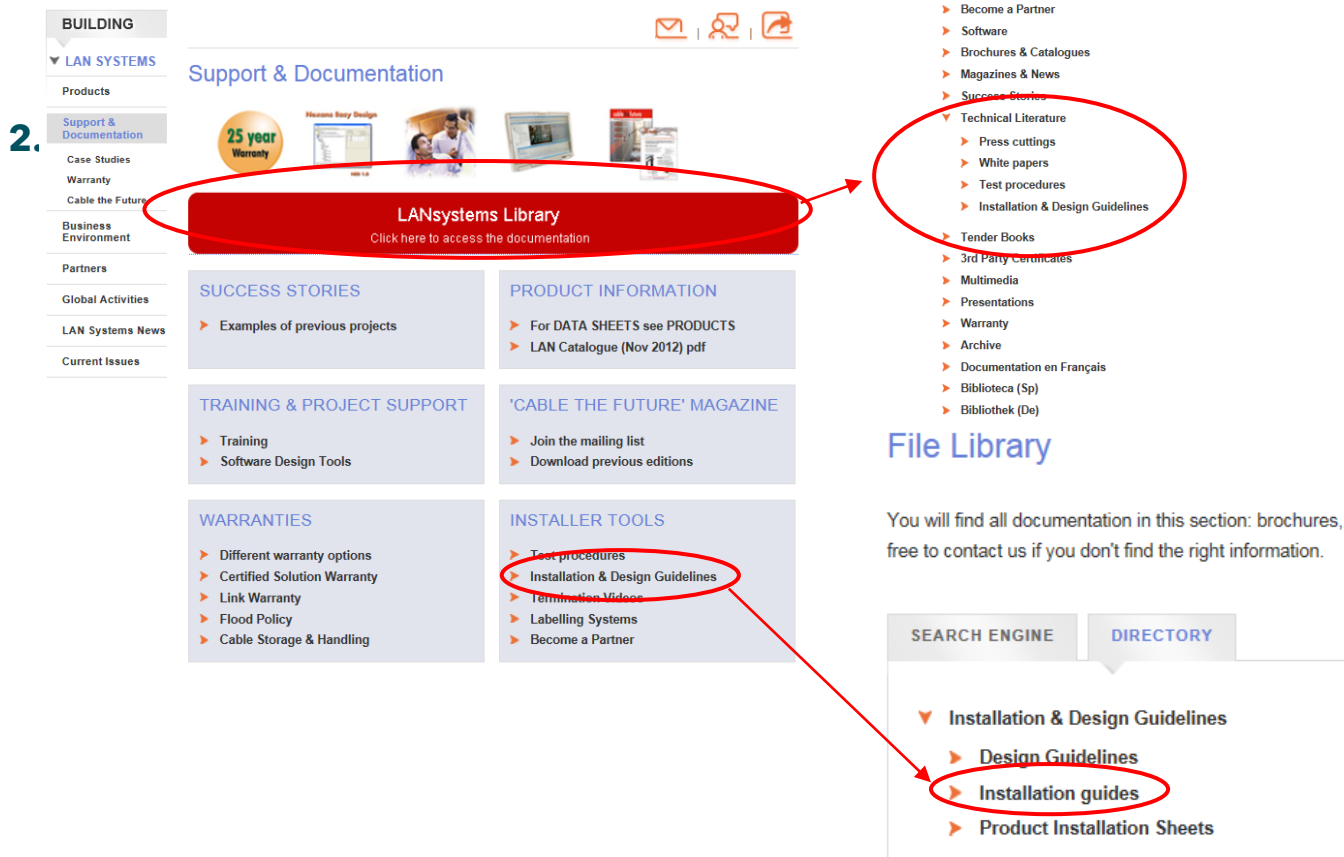
- Tight Buffer Cable Supplement
- Loose Tube Cable Supplement
- Micro-Bundle Cable Supplement
- Pre-Terminated Cable Supplement (this document)

In addition, there is also a General Installation guide (for both copper and fibre) which includes further information.

**Please note:** The Aginode warranty may be invalidated if the cables have not been properly stored or handled according to Aginode (NCS) requirements.

When logged into the NCS site, all these documents and also others relating to design and installation testing etc can be found [here](#)

2.



The screenshot shows the Aginode website's 'Support & Documentation' page. A red circle highlights the 'LANsystems Library' button in the main content area. An arrow points from this button to a red circle around the 'Technical Literature' menu item in the right-hand navigation menu. Another arrow points from the 'Installation & Design Guidelines' link in the 'INSTALLER TOOLS' section to a red circle around the 'Installation guides' link in the 'File Library' section.

## Product references

The rules described in the following chapters are applicable to all types of pre-terminated assemblies:

### **LANmark-OF OM3, OM4, Singlemode (OS2) Fibre Assembly N15F.ABBCFCFPXXX**



### **LANmark-OF MTP-MTP Pre-Term N15F.MBBCDXXXY**



### 3. Pre-Terminated OF cable pulling - general rules

**Please note:** The Aginode warranty may be invalidated if the following instructions are not respected:

1. Pallets shall not be stacked one on the other. Only one layer of pallets is allowed.
2. The manipulation of the cable and the tails shall be within the bending radius limits of the cable / tail.
3. During installation and use, the assemblies shall not be exposed to containment etc with sharp edges.
4. When installing Pre-Terminated cables appropriate techniques shall be applied in order to eliminate cable stress.
5. For de-reeling, the drums must be mounted on suitable cable jacks and support bars.  
Note: Short length (< 42m) are provided on a reel that can't be mounted on jacks or bars. Several methods can be used to de-reel the pre-terminated cables from the < 42m reels. Please ensure that the method you use will prevent the cable from becoming twisted or tangled and that the protective tube (on the reel end) is retained on the reel during the installation process.
6. The removal of the pulling part shall be done according to the instructions provided in the next chapter.
7. Before mating any connector, it shall be cleaned according to the Aginode OF inspection and cleaning guide (see the important note in the next chapter).
8. Do not pull on the tails to manipulate the assembly position.
9. The pulling force applied on the pulling system shall not exceed 450N.
10. Product shall be used in controlled environment:
  - Operating temperature: - 10 °C to +60 °C
  - Relative humidity: 5 % to 93 %
11. It is imperative that the pulling system (installed on the Pre-Terminated cable end) is used so that the pulling forces are applied to the cable strength members.  
If a cable is grabbed by hand, the point pressure that is applied in this manner may cause the outer sheath (jacket) to be elongated as well as causing the fibres to be stretched. When the cable is then released, the optical fibres will then pull back and bunch up within the cable structure, which will cause irreparable damage to the fibres resulting in significant performance degradation.

The following sections assume the cable assembly has been installed.

## 4. LANmark-OF SC/LC Pre-Terminated assemblies fan-outs installation

Please carefully follow this procedure to ensure optimal installation of Aginode Pre-Terminated OF assemblies.

### 4.1. Fan-outs

The Pre-Terminated assemblies can be ordered with two types of fan-out:

- 900 $\mu$ m fan-out for installation inside patch panels
- 2mm fan-out for direct connection to active equipment ports or to the front side of patch panels



The 2mm fan-out of pre-terminated assemblies are not equipped with any pulling part and are protected by a bubble wrap sleeve secured with tape. Remove the tape from the protective bubble wrap and remove the bubble sleeve.

The following procedure is only valid for pre-terminated assemblies having 900 $\mu$ m fan-out.



One or both ends of the assembly can be equipped with a pulling eye system. If both ends are not equipped with a pulling part, please move straight to the chapter 4.3.

## 4.2. Pulling part removal procedure

1. Choose the end where the pulling eye is protruding through the slot in the black cap and remove the cap by twisting it off



2. Unscrew the bolt from retaining pin and remove it



3. Unscrew the nut in the pulling eye to release it



Note: it may be necessary to slide the protective tube over the cable gland (in the direction of the cable) a little in order to expose enough of the strength member to remove the pulling eye.

If this needs to be done, we recommend holding the back of the cable gland whilst gently holding the protective tube (near the gland) and rotating it.



Note: we do not recommend to remove the protection tube before the assembly has been inserted into the patch panel.

### 4.3. Installation process in the patch panel

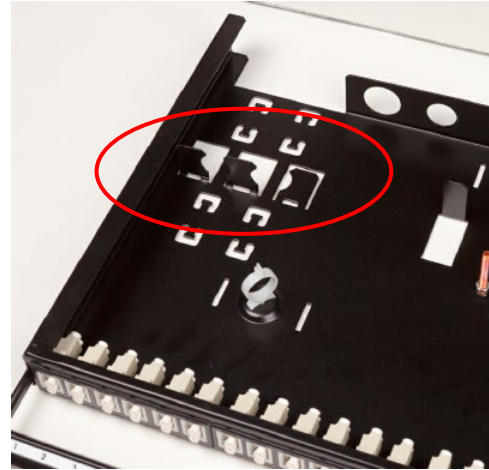
#### Note

The gland holes of the LANmark-OF patch panels listed below are open at the top and are therefore suitable for use with Pre-Terminated assemblies.

- N441.203 / 204 new version (from 2014) LANmark-OF Snap-In patch panel
- N439.2Bnnabcd LANmark-OF preloaded patch panels
- N883.2Bnnabcd LANSense-OF preloaded patch panels
- N439.2AnnLCab LANmark-OF angled preloaded patch panels
- N883.2AnnLCab LANSense-OF angled preloaded patch panels

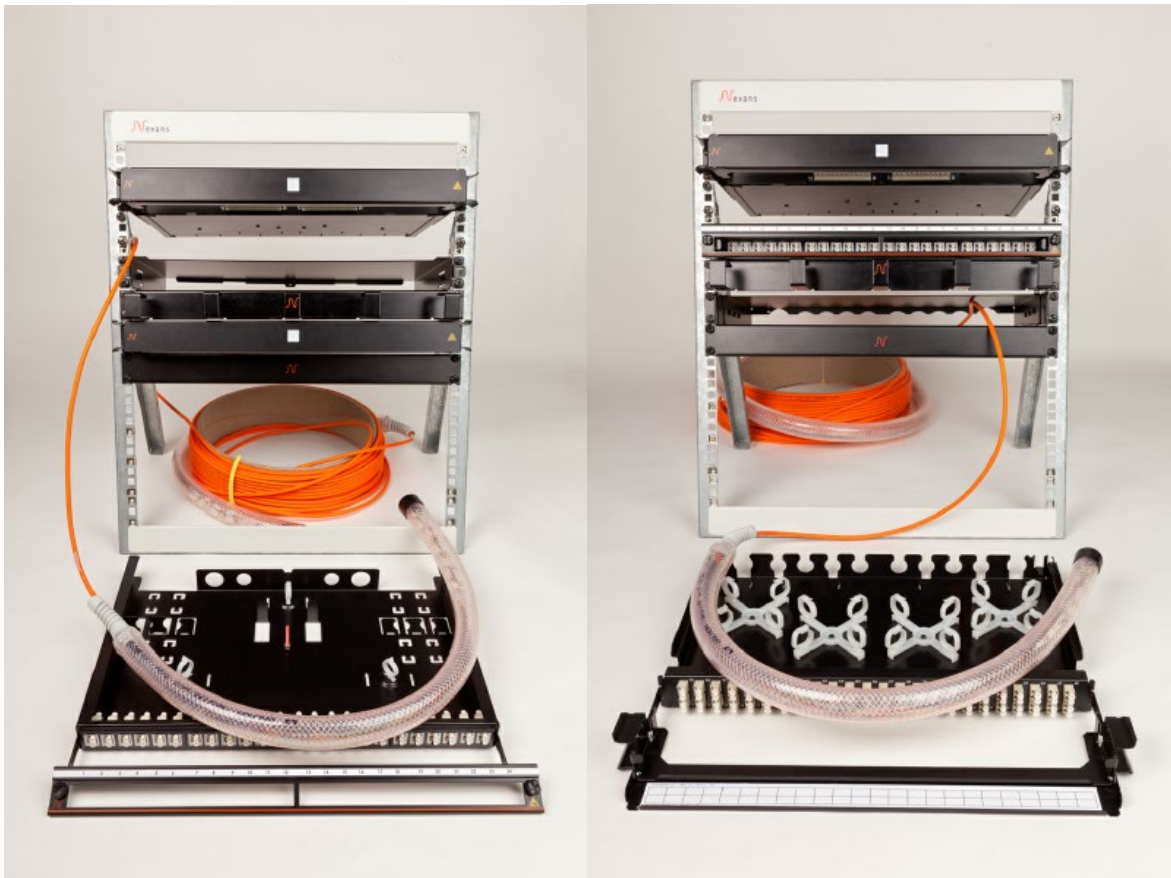


The legacy version (before 2014) of the Snap-In patch panel (N441.203 / 204) is equipped with tabs that need to be raised to provide a cable gland fixing point for the Pre-Terminated assemblies

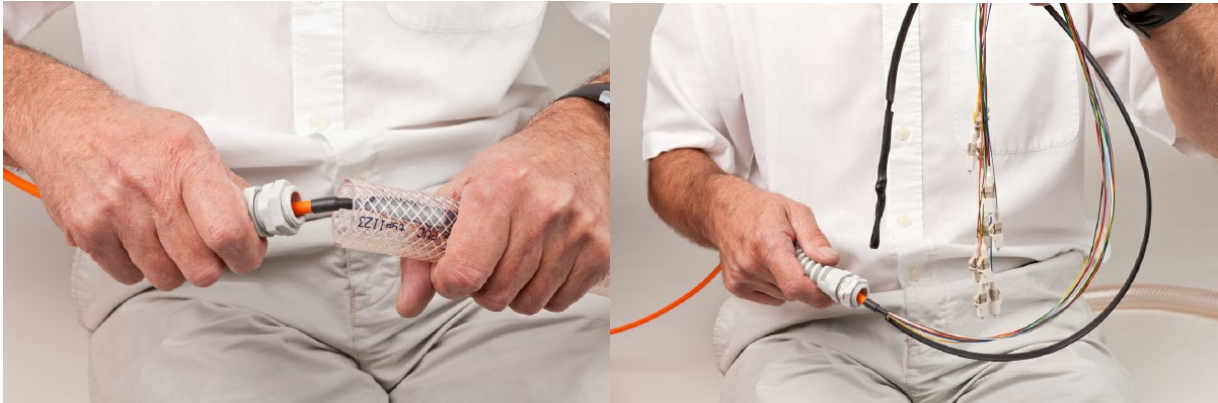


Full installation guides for the panels listed above are available on our website: see page 2

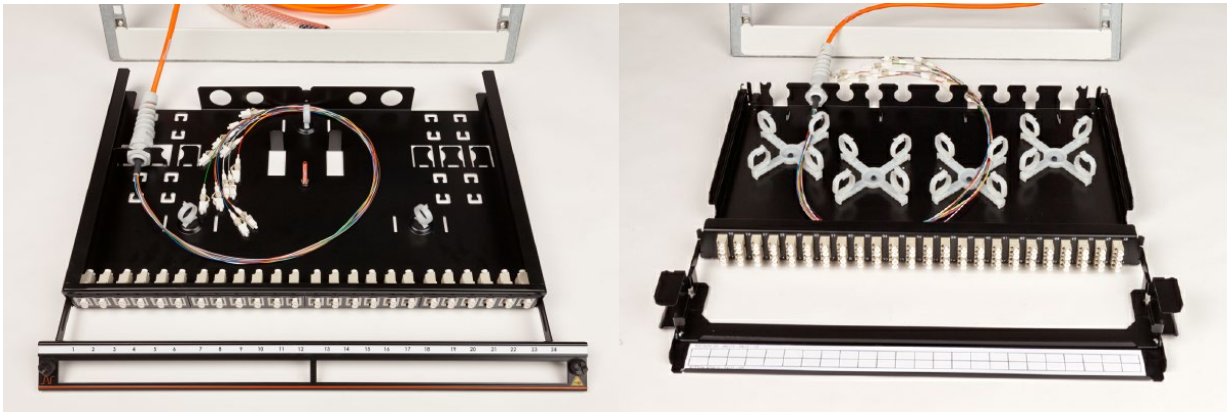
1. With the protective tube still in place, insert the cable end from the rear of the chassis  
Refer to the installation guides of the Snap-In and Pre-loaded patch panels for additional information



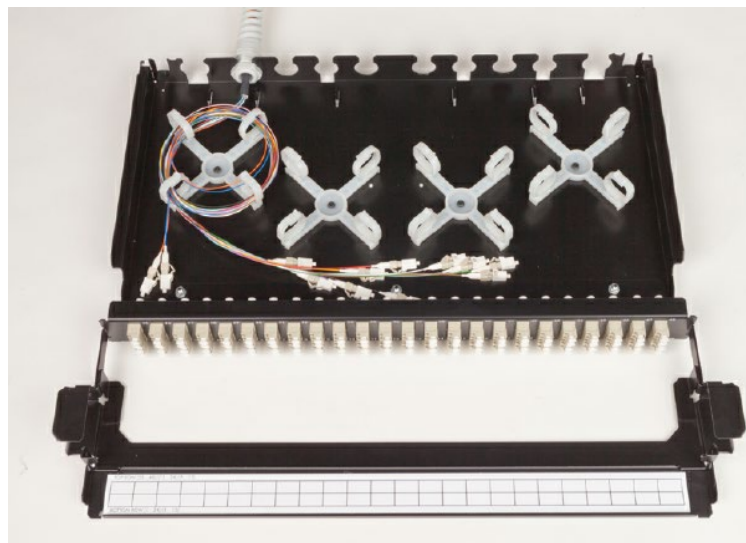
2. Remove the protective tube to access the cable gland



3. Slide and fasten the gland in one of the gland hole



4. Coil the fibre using loops rings provided with the panel  
Leave enough slack at this stage so that cleaning of the end faces can be undertaken - see step 5



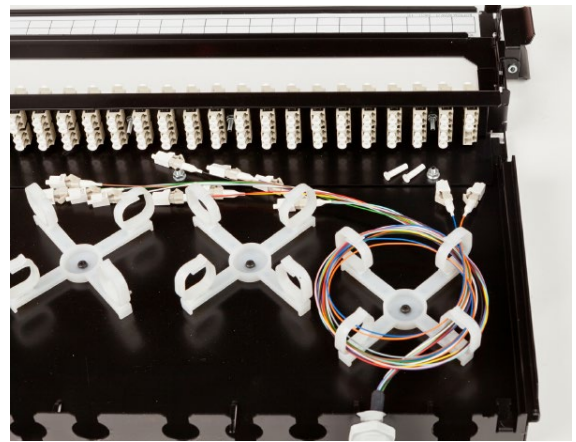
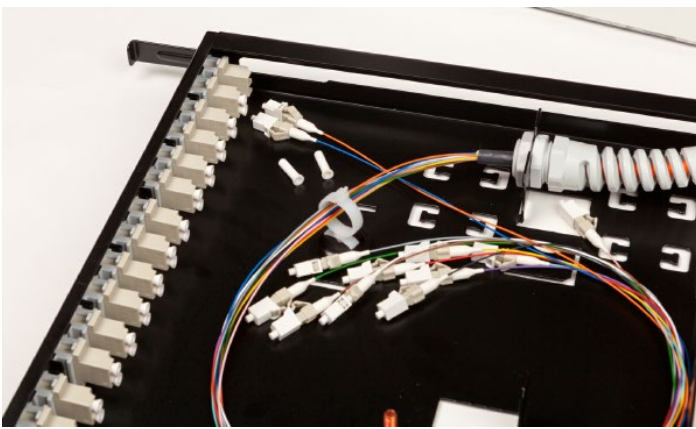
5. Remove the dust protection caps on the inside of the couplers where connectors will be inserted

**Important note**

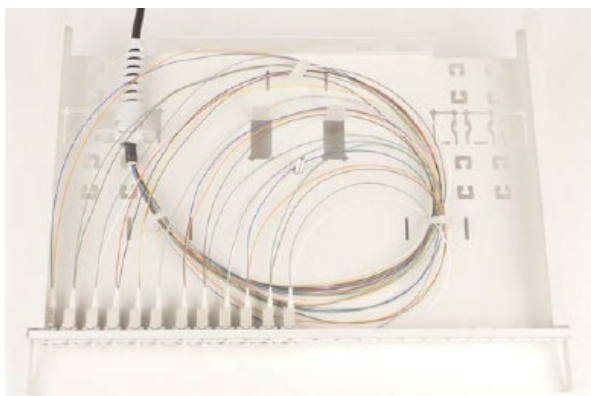
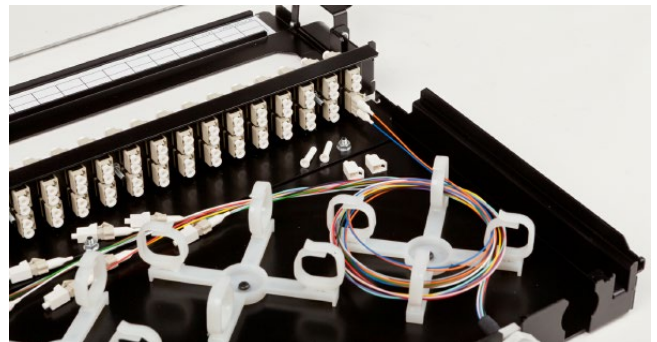
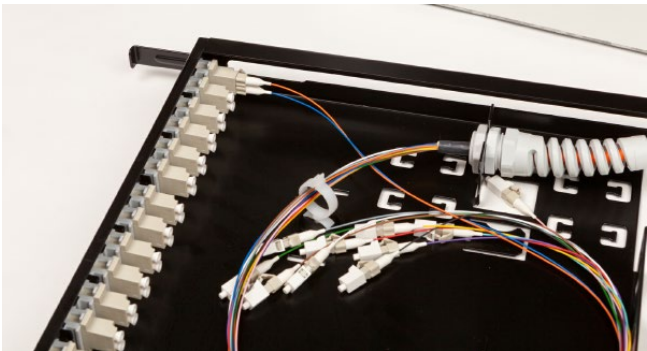
The cleaning of all the optical fibre connectors prior to the installation (pigtail, patch cords etc) is a critical factor that needs to be applied at all times.

Latest applications have stringent link loss requirements and in order to ensure that the required performances levels are achieved during commissioning and operation, the cleanliness of all fibre interfaces needs to be maintained.

Please refer to the Aginode  
**OF connector Inspection, Cleaning & Testing general guidelines**  
It can be downloaded [here](#)



6. Coil the excess fibre in the loops rings and insert connectors according to the colour coding / position sequence of the couplers



Please refer to technical paper “Recommendations to maintain OF duplex channel polarity” which is available from our website under “File Library”. Knowledge of this document content will assist in efficient preparation of the cores and storing within the spindle or rings (see below).

NB. Always maintain installation cleanliness practice! Close the drawer whenever you finish working on the panel and keep dust caps fitted.

#### 4.4. OF system polarity

The only way to automatically maintain the duplex polarity without having to think about it, is to include a crossover into all the OF link segments. In other words, fibres pairs have to be swapped over (interchanged) into the patch panel on one side of every link segment.

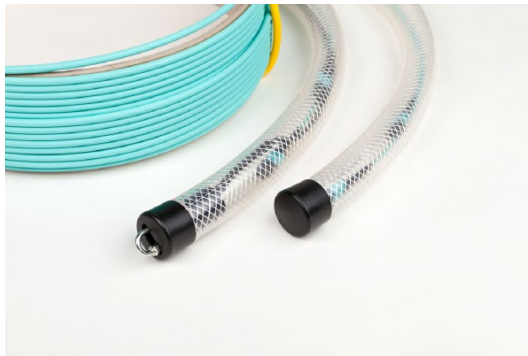
Reverse-pair wiring - OF Cable termination scheme							
OF Patch panel - Side A				OF Patch panel - Side B			
Campus BB: CD side				Campus BB: BD side			
Building BB: BD side				Building BB: FD side			
FTTD: FD side				FTTD: CP side (ZD box)			
Fibre coding		Front panel position		Fibre coding		Front panel position	
Colour	Pair	SC	LC (*)	Colour	Pair	SC	LC (*)
Blue	1	1	1a	Orange	1	1	1a
Orange		2	1b	Blue		2	1b
Green	2	3	2a	Brown	2	3	2a
Brown		4	2b	Green		4	2b
Grey	3	5	3a	White	3	5	3a
White		6	3b	Grey		6	3b
Red	4	7	4a	Black	4	7	4a
Black		8	4b	Red		8	4b
Yellow	5	9	5a	Violet	5	9	5a
Violet		10	5b	Yellow		10	5b
Pink	6	11	6a	Turquoise	6	11	6a
Turquoise		12	6b	Pink		12	6b
Blue + 1 ring	7	13	7a	Orange + 1 r.	7	13	7a
Orange + 1 r.		14	7b	Blue + 1 ring		14	7b
Green + 1 r.	8	15	8a	Brown + 1 r.	8	15	8a
Brown + 1 r.		16	8b	Green + 1 r.		16	8b
Grey + 1 r.	9	17	9a	White + 1 r.	9	17	9a
White + 1 r.		18	9b	Grey + 1 r.		18	9b
Blue + 2 rings	10	19	10a	Orange + 2 r.	10	19	10a
Orange + 2 r.		20	10b	Blue + 2 rings		20	10b
Green + 2 r.	11	21	11a	Brown + 2 r.	11	21	11a
Brown + 2 r.		22	11b	Green + 2 r.		22	11b
Grey + 2 r.	12	23	12a	White + 2 r.	12	23	12a
White + 2 r.		24	12b	Grey + 2 r.		24	12b

To be repeated twice or four time for a fully loaded patch panel (48 SC or 96 LC)

## 5. LANmark-OF MTP/MTP Pre-Terminated assemblies

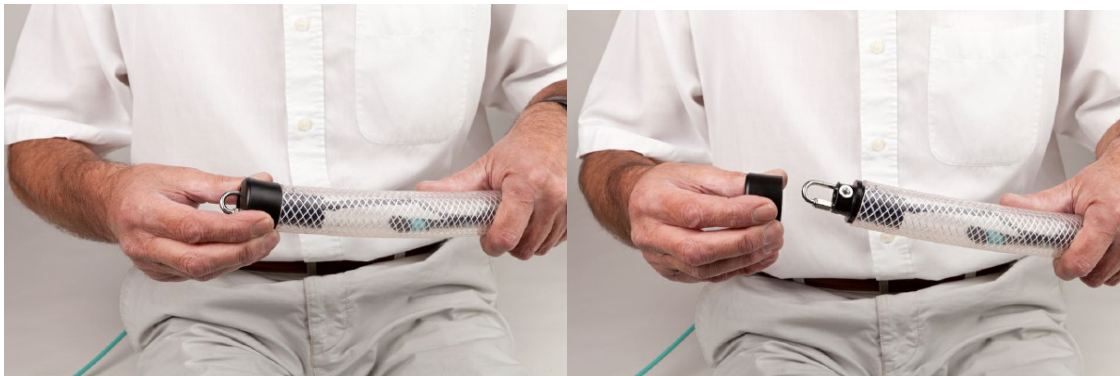
Please carefully follow this procedure to ensure optimal installation of Aginode Pre-Terminated OF assemblies.

The Pre-Terminated assemblies are always delivered with a 2mm fan-out for direct connection to active equipment ports or to MTP cassettes. The terminated ends of the assemblies are protected in a transparent plastic tube. One end of the tube is equipped with a pulling eye system. If both ends are not equipped with a pulling part, move straight to the chapter 5.3



### 5.1. Pulling part removal procedure

1. Choose the end where the pulling eye is protruding through the slot in the black cap and remove the cap by twisting it off



2. Unscrew the bolt from retaining pin and remove it



3. Unscrew the nut in the pulling eye to release it



Note: it may be necessary to slide the protective tube over the cable gland (in the direction of the cable) a little in order to expose enough of the strength member to remove the pulling eye.

If this needs to be done, we recommend holding the back of the cable gland whilst gently holding the protective tube (near the gland) and rotating it.



Note: remove the protection tube before the assembly has been inserted into the patch panel.

## 5.2. Installation process in the patch panel

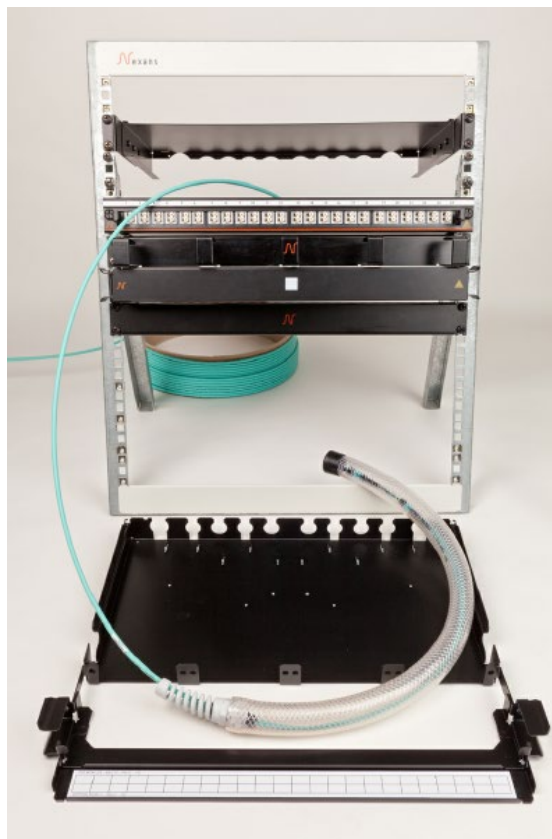
### Note

The gland holes of the LANmark-OF MTP patch panel listed below are open at the top and are therefore suitable for use with Pre-Terminated assemblies.

- N439.3MPP LANmark-OF Plug&Play Patch Panel Pre-Term Trunk Sliding Black



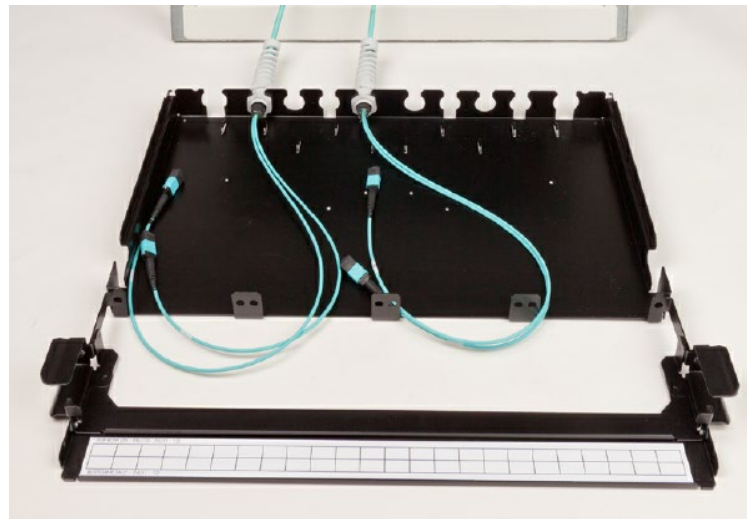
1. Install the cable and insert the cable end from the rear of the chassis



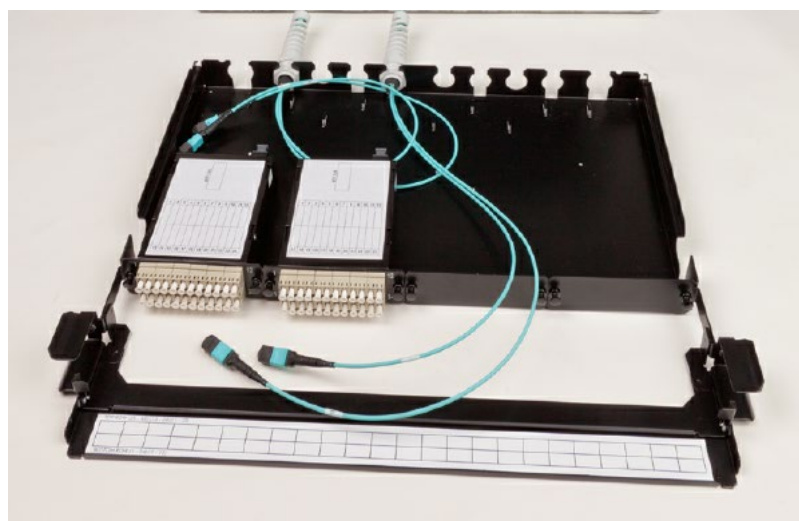
2. Remove the protective tube to access the cable gland



3. Slide and fasten the gland in one of the gland hole



4. Install the MPO cassettes into the panel



5. Remove the dust protection caps of the MTP connectors at the back of the cassettes

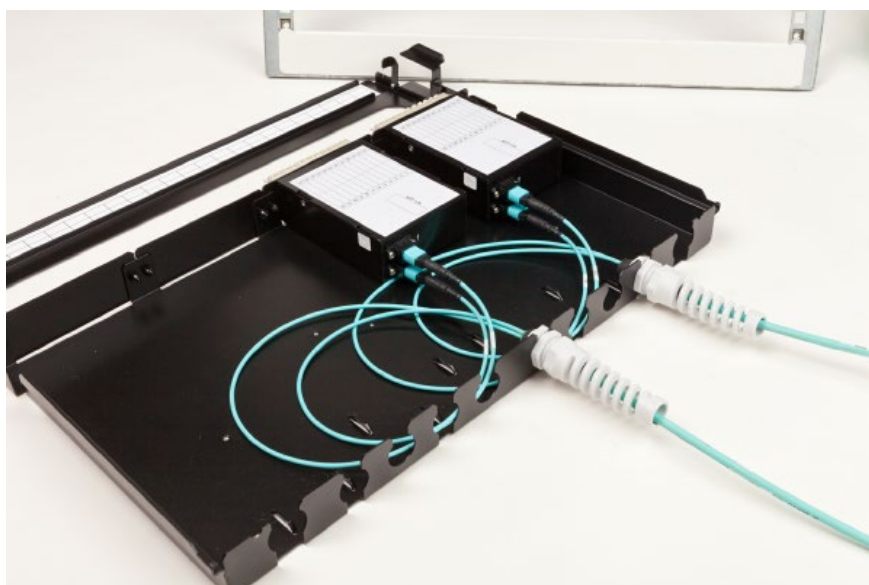
#### **Important note**

The cleaning of all the optical fibre connectors prior to the installation (pigtail, patch cords etc) is a critical factor that needs to be applied at all times. Latest applications have stringent link loss requirements and in order to ensure that the required performances levels are achieved during commissioning and operation, the cleanliness of all fibre interfaces needs to be maintained.

The Aginode **OF connector Inspection, Cleaning & Testing general guidelines** can be downloaded [here](#)



6. Coil the fibre and insert connectors according to the required sequence (each MTP fan-out is labeled)



### 5.3. OF system polarity

The only way to automatically maintain the duplex polarity without having to think about it, is to include a crossover into all the OF link segments. In other words, fibres pairs have to be swapped over (interchanged) into the patch panel on one side of every link segment.

The polarity is automatically maintained (method C) for Aginode MTP system.



NB. Always maintain installation cleanliness practice! Close the drawer whenever you finish working on the panel and keep dust caps fitted.

### 6. Testing recommendations

Each MTP Pre-Terminated assembly is 100% factory tested and a test report is always included in the packaging.

Serial No.		Con	Connector	RL (dB)			BR (dB)		Date																																																																																																																																																																																																																																																																																																																																																																																																																																																																																																																				
				250nm	1310nm	1550nm	450nm	1550nm																																																																																																																																																																																																																																																																																																																																																																																																																																																																																																																					
<b>LANmark-OF TEST REPORT</b>																																																																																																																																																																																																																																																																																																																																																																																																																																																																																																																													
Part Number: N155.TZ4LSL54016								Serial Number																																																																																																																																																																																																																																																																																																																																																																																																																																																																																																																					
Description: LANmark-OF Pre-terminated cable OM3 24 LC (24fu) - LC (809) 16m L5Z4								#2075																																																																																																																																																																																																																																																																																																																																																																																																																																																																																																																					
<table border="1"> <thead> <tr> <th colspan="2">Serial No.</th> <th>Con</th> <th>Connector</th> <th colspan="3">RL (dB)</th> <th colspan="2">BR (dB)</th> <th>Date</th> </tr> <tr> <th colspan="2"></th> <th></th> <th></th> <th>250nm</th> <th>1310nm</th> <th>1550nm</th> <th>450nm</th> <th>1550nm</th> <th></th> </tr> </thead> <tbody> <tr><td>0208 A</td><td>1</td><td>LC</td><td>LC</td><td>0.09</td><td>0.09</td><td>0.09</td><td>38.8</td><td>38.2</td><td>19.1.2020</td></tr> <tr><td>12075-1</td><td>2</td><td>LC</td><td>LC</td><td>0.17</td><td>0.17</td><td>0.17</td><td>38.1</td><td>38.2</td><td>19.1.2020</td></tr> <tr><td>12075-1</td><td>3</td><td>LC</td><td>LC</td><td>0.07</td><td>0.07</td><td>0.07</td><td>38.5</td><td>38.2</td><td>19.1.2020</td></tr> <tr><td>12075-1</td><td>4</td><td>LC</td><td>LC</td><td>0.05</td><td>0.05</td><td>0.05</td><td>38.2</td><td>38.2</td><td>19.1.2020</td></tr> <tr><td>12075-1</td><td>5</td><td>LC</td><td>LC</td><td>0.11</td><td>0.11</td><td>0.11</td><td>37.2</td><td>38.2</td><td>19.1.2020</td></tr> <tr><td>12075-1</td><td>6</td><td>LC</td><td>LC</td><td>0.19</td><td>0.19</td><td>0.19</td><td>38.2</td><td>38.2</td><td>19.1.2020</td></tr> <tr><td>12075-1</td><td>7</td><td>LC</td><td>LC</td><td>0.09</td><td>0.09</td><td>0.09</td><td>38.2</td><td>38.2</td><td>19.1.2020</td></tr> <tr><td>12075-1</td><td>8</td><td>LC</td><td>LC</td><td>0.08</td><td>0.08</td><td>0.08</td><td>38.2</td><td>38.2</td><td>19.1.2020</td></tr> <tr><td>12075-1</td><td>9</td><td>LC</td><td>LC</td><td>0.09</td><td>0.09</td><td>0.09</td><td>38.2</td><td>38.2</td><td>19.1.2020</td></tr> <tr><td>12075-1</td><td>10</td><td>LC</td><td>LC</td><td>0.07</td><td>0.07</td><td>0.07</td><td>38.4</td><td>38.2</td><td>19.1.2020</td></tr> <tr><td>12075-1</td><td>11</td><td>LC</td><td>LC</td><td>0.09</td><td>0.09</td><td>0.09</td><td>38.2</td><td>38.2</td><td>19.1.2020</td></tr> <tr><td>12075-1</td><td>12</td><td>LC</td><td>LC</td><td>0.09</td><td>0.09</td><td>0.09</td><td>38.4</td><td>38.2</td><td>19.1.2020</td></tr> <tr><td>12075-1</td><td>13</td><td>LC</td><td>LC</td><td>0.09</td><td>0.09</td><td>0.09</td><td>38.5</td><td>38.2</td><td>19.1.2020</td></tr> <tr><td>12075-1</td><td>14</td><td>LC</td><td>LC</td><td>0.05</td><td>0.05</td><td>0.05</td><td>39.4</td><td>38.2</td><td>19.1.2020</td></tr> <tr><td>12075-1</td><td>15</td><td>LC</td><td>LC</td><td>0.03</td><td>0.03</td><td>0.03</td><td>38.5</td><td>38.2</td><td>19.1.2020</td></tr> <tr><td>12075-1</td><td>16</td><td>LC</td><td>LC</td><td>0.05</td><td>0.05</td><td>0.05</td><td>38.2</td><td>38.2</td><td>19.1.2020</td></tr> <tr><td>12075-1</td><td>17</td><td>LC</td><td>LC</td><td>0.11</td><td>0.11</td><td>0.11</td><td>40.1</td><td>38.2</td><td>19.1.2020</td></tr> <tr><td>12075-1</td><td>18</td><td>LC</td><td>LC</td><td>0.09</td><td>0.09</td><td>0.09</td><td>38.2</td><td>38.2</td><td>19.1.2020</td></tr> <tr><td>12075-1</td><td>19</td><td>LC</td><td>LC</td><td>0.04</td><td>0.04</td><td>0.04</td><td>38.4</td><td>38.2</td><td>19.1.2020</td></tr> <tr><td>12075-1</td><td>20</td><td>LC</td><td>LC</td><td>0.05</td><td>0.05</td><td>0.05</td><td>38.2</td><td>38.2</td><td>19.1.2020</td></tr> <tr><td>12075-1</td><td>21</td><td>LC</td><td>LC</td><td>0.11</td><td>0.11</td><td>0.11</td><td>37.2</td><td>38.2</td><td>19.1.2020</td></tr> <tr><td>12075-1</td><td>22</td><td>LC</td><td>LC</td><td>0.05</td><td>0.05</td><td>0.05</td><td>38.5</td><td>38.2</td><td>19.1.2020</td></tr> <tr><td>12075-1</td><td>23</td><td>LC</td><td>LC</td><td>0.05</td><td>0.05</td><td>0.05</td><td>39.4</td><td>38.2</td><td>19.1.2020</td></tr> <tr><td colspan="10"><b>0208 B</b></td></tr> <tr><td>12075-1</td><td>1</td><td>LC</td><td>LC</td><td>0.08</td><td>0.08</td><td>0.08</td><td>38.2</td><td>38.2</td><td>19.1.2020</td></tr> <tr><td>12075-1</td><td>2</td><td>LC</td><td>LC</td><td>0.07</td><td>0.07</td><td>0.07</td><td>37.8</td><td>38.2</td><td>19.1.2020</td></tr> <tr><td>12075-1</td><td>3</td><td>LC</td><td>LC</td><td>0.16</td><td>0.16</td><td>0.16</td><td>39.5</td><td>38.2</td><td>19.1.2020</td></tr> <tr><td>12075-1</td><td>4</td><td>LC</td><td>LC</td><td>0.05</td><td>0.05</td><td>0.05</td><td>38.4</td><td>38.2</td><td>19.1.2020</td></tr> <tr><td>12075-1</td><td>5</td><td>LC</td><td>LC</td><td>0.13</td><td>0.13</td><td>0.13</td><td>38.2</td><td>38.2</td><td>19.1.2020</td></tr> <tr><td>12075-1</td><td>6</td><td>LC</td><td>LC</td><td>0.17</td><td>0.17</td><td>0.17</td><td>38.2</td><td>38.2</td><td>19.1.2020</td></tr> <tr><td>12075-1</td><td>7</td><td>LC</td><td>LC</td><td>0.1</td><td>0.1</td><td>0.1</td><td>37.8</td><td>38.2</td><td>19.1.2020</td></tr> <tr><td>12075-1</td><td>8</td><td>LC</td><td>LC</td><td>0.07</td><td>0.07</td><td>0.07</td><td>38.2</td><td>38.2</td><td>19.1.2020</td></tr> <tr><td>12075-1</td><td>9</td><td>LC</td><td>LC</td><td>0.04</td><td>0.04</td><td>0.04</td><td>38.2</td><td>38.2</td><td>19.1.2020</td></tr> <tr><td>12075-1</td><td>10</td><td>LC</td><td>LC</td><td>0.12</td><td>0.12</td><td>0.12</td><td>37.8</td><td>38.2</td><td>19.1.2020</td></tr> <tr><td>12075-1</td><td>11</td><td>LC</td><td>LC</td><td>0.08</td><td>0.08</td><td>0.08</td><td>38.2</td><td>38.2</td><td>19.1.2020</td></tr> <tr><td>12075-1</td><td>12</td><td>LC</td><td>LC</td><td>0.1</td><td>0.1</td><td>0.1</td><td>38.6</td><td>38.2</td><td>19.1.2020</td></tr> <tr><td>12075-1</td><td>13</td><td>LC</td><td>LC</td><td>0.11</td><td>0.11</td><td>0.11</td><td>38.2</td><td>38.2</td><td>19.1.2020</td></tr> <tr><td>12075-1</td><td>14</td><td>LC</td><td>LC</td><td>0.14</td><td>0.14</td><td>0.14</td><td>38.2</td><td>38.2</td><td>19.1.2020</td></tr> <tr><td>12075-1</td><td>15</td><td>LC</td><td>LC</td><td>0.19</td><td>0.19</td><td>0.19</td><td>38.4</td><td>38.2</td><td>19.1.2020</td></tr> <tr><td>12075-1</td><td>16</td><td>LC</td><td>LC</td><td>0.09</td><td>0.09</td><td>0.09</td><td>38.2</td><td>38.2</td><td>19.1.2020</td></tr> <tr><td>12075-1</td><td>17</td><td>LC</td><td>LC</td><td>0.09</td><td>0.09</td><td>0.09</td><td>38.2</td><td>38.2</td><td>19.1.2020</td></tr> <tr><td>12075-1</td><td>18</td><td>LC</td><td>LC</td><td>0.09</td><td>0.09</td><td>0.09</td><td>38.2</td><td>38.2</td><td>19.1.2020</td></tr> <tr><td>12075-1</td><td>19</td><td>LC</td><td>LC</td><td>0.11</td><td>0.11</td><td>0.11</td><td>38.2</td><td>38.2</td><td>19.1.2020</td></tr> <tr><td>12075-1</td><td>20</td><td>LC</td><td>LC</td><td>0.10</td><td>0.10</td><td>0.10</td><td>38.2</td><td>38.2</td><td>19.1.2020</td></tr> <tr><td>12075-1</td><td>21</td><td>LC</td><td>LC</td><td>0.07</td><td>0.07</td><td>0.07</td><td>38.2</td><td>38.2</td><td>19.1.2020</td></tr> <tr><td>12075-1</td><td>22</td><td>LC</td><td>LC</td><td>0.07</td><td>0.07</td><td>0.07</td><td>38.2</td><td>38.2</td><td>19.1.2020</td></tr> <tr><td>12075-1</td><td>23</td><td>LC</td><td>LC</td><td>0.05</td><td>0.05</td><td>0.05</td><td>39.4</td><td>38.2</td><td>19.1.2020</td></tr> <tr><td>12075-1</td><td>24</td><td>LC</td><td>LC</td><td>0.05</td><td>0.05</td><td>0.05</td><td>39.4</td><td>38.2</td><td>19.1.2020</td></tr> </tbody> </table>										Serial No.		Con	Connector	RL (dB)			BR (dB)		Date					250nm	1310nm	1550nm	450nm	1550nm		0208 A	1	LC	LC	0.09	0.09	0.09	38.8	38.2	19.1.2020	12075-1	2	LC	LC	0.17	0.17	0.17	38.1	38.2	19.1.2020	12075-1	3	LC	LC	0.07	0.07	0.07	38.5	38.2	19.1.2020	12075-1	4	LC	LC	0.05	0.05	0.05	38.2	38.2	19.1.2020	12075-1	5	LC	LC	0.11	0.11	0.11	37.2	38.2	19.1.2020	12075-1	6	LC	LC	0.19	0.19	0.19	38.2	38.2	19.1.2020	12075-1	7	LC	LC	0.09	0.09	0.09	38.2	38.2	19.1.2020	12075-1	8	LC	LC	0.08	0.08	0.08	38.2	38.2	19.1.2020	12075-1	9	LC	LC	0.09	0.09	0.09	38.2	38.2	19.1.2020	12075-1	10	LC	LC	0.07	0.07	0.07	38.4	38.2	19.1.2020	12075-1	11	LC	LC	0.09	0.09	0.09	38.2	38.2	19.1.2020	12075-1	12	LC	LC	0.09	0.09	0.09	38.4	38.2	19.1.2020	12075-1	13	LC	LC	0.09	0.09	0.09	38.5	38.2	19.1.2020	12075-1	14	LC	LC	0.05	0.05	0.05	39.4	38.2	19.1.2020	12075-1	15	LC	LC	0.03	0.03	0.03	38.5	38.2	19.1.2020	12075-1	16	LC	LC	0.05	0.05	0.05	38.2	38.2	19.1.2020	12075-1	17	LC	LC	0.11	0.11	0.11	40.1	38.2	19.1.2020	12075-1	18	LC	LC	0.09	0.09	0.09	38.2	38.2	19.1.2020	12075-1	19	LC	LC	0.04	0.04	0.04	38.4	38.2	19.1.2020	12075-1	20	LC	LC	0.05	0.05	0.05	38.2	38.2	19.1.2020	12075-1	21	LC	LC	0.11	0.11	0.11	37.2	38.2	19.1.2020	12075-1	22	LC	LC	0.05	0.05	0.05	38.5	38.2	19.1.2020	12075-1	23	LC	LC	0.05	0.05	0.05	39.4	38.2	19.1.2020	<b>0208 B</b>										12075-1	1	LC	LC	0.08	0.08	0.08	38.2	38.2	19.1.2020	12075-1	2	LC	LC	0.07	0.07	0.07	37.8	38.2	19.1.2020	12075-1	3	LC	LC	0.16	0.16	0.16	39.5	38.2	19.1.2020	12075-1	4	LC	LC	0.05	0.05	0.05	38.4	38.2	19.1.2020	12075-1	5	LC	LC	0.13	0.13	0.13	38.2	38.2	19.1.2020	12075-1	6	LC	LC	0.17	0.17	0.17	38.2	38.2	19.1.2020	12075-1	7	LC	LC	0.1	0.1	0.1	37.8	38.2	19.1.2020	12075-1	8	LC	LC	0.07	0.07	0.07	38.2	38.2	19.1.2020	12075-1	9	LC	LC	0.04	0.04	0.04	38.2	38.2	19.1.2020	12075-1	10	LC	LC	0.12	0.12	0.12	37.8	38.2	19.1.2020	12075-1	11	LC	LC	0.08	0.08	0.08	38.2	38.2	19.1.2020	12075-1	12	LC	LC	0.1	0.1	0.1	38.6	38.2	19.1.2020	12075-1	13	LC	LC	0.11	0.11	0.11	38.2	38.2	19.1.2020	12075-1	14	LC	LC	0.14	0.14	0.14	38.2	38.2	19.1.2020	12075-1	15	LC	LC	0.19	0.19	0.19	38.4	38.2	19.1.2020	12075-1	16	LC	LC	0.09	0.09	0.09	38.2	38.2	19.1.2020	12075-1	17	LC	LC	0.09	0.09	0.09	38.2	38.2	19.1.2020	12075-1	18	LC	LC	0.09	0.09	0.09	38.2	38.2	19.1.2020	12075-1	19	LC	LC	0.11	0.11	0.11	38.2	38.2	19.1.2020	12075-1	20	LC	LC	0.10	0.10	0.10	38.2	38.2	19.1.2020	12075-1	21	LC	LC	0.07	0.07	0.07	38.2	38.2	19.1.2020	12075-1	22	LC	LC	0.07	0.07	0.07	38.2	38.2	19.1.2020	12075-1	23	LC	LC	0.05	0.05	0.05	39.4	38.2	19.1.2020	12075-1	24	LC	LC	0.05	0.05	0.05	39.4	38.2	19.1.2020
Serial No.		Con	Connector	RL (dB)			BR (dB)		Date																																																																																																																																																																																																																																																																																																																																																																																																																																																																																																																				
				250nm	1310nm	1550nm	450nm	1550nm																																																																																																																																																																																																																																																																																																																																																																																																																																																																																																																					
0208 A	1	LC	LC	0.09	0.09	0.09	38.8	38.2	19.1.2020																																																																																																																																																																																																																																																																																																																																																																																																																																																																																																																				
12075-1	2	LC	LC	0.17	0.17	0.17	38.1	38.2	19.1.2020																																																																																																																																																																																																																																																																																																																																																																																																																																																																																																																				
12075-1	3	LC	LC	0.07	0.07	0.07	38.5	38.2	19.1.2020																																																																																																																																																																																																																																																																																																																																																																																																																																																																																																																				
12075-1	4	LC	LC	0.05	0.05	0.05	38.2	38.2	19.1.2020																																																																																																																																																																																																																																																																																																																																																																																																																																																																																																																				
12075-1	5	LC	LC	0.11	0.11	0.11	37.2	38.2	19.1.2020																																																																																																																																																																																																																																																																																																																																																																																																																																																																																																																				
12075-1	6	LC	LC	0.19	0.19	0.19	38.2	38.2	19.1.2020																																																																																																																																																																																																																																																																																																																																																																																																																																																																																																																				
12075-1	7	LC	LC	0.09	0.09	0.09	38.2	38.2	19.1.2020																																																																																																																																																																																																																																																																																																																																																																																																																																																																																																																				
12075-1	8	LC	LC	0.08	0.08	0.08	38.2	38.2	19.1.2020																																																																																																																																																																																																																																																																																																																																																																																																																																																																																																																				
12075-1	9	LC	LC	0.09	0.09	0.09	38.2	38.2	19.1.2020																																																																																																																																																																																																																																																																																																																																																																																																																																																																																																																				
12075-1	10	LC	LC	0.07	0.07	0.07	38.4	38.2	19.1.2020																																																																																																																																																																																																																																																																																																																																																																																																																																																																																																																				
12075-1	11	LC	LC	0.09	0.09	0.09	38.2	38.2	19.1.2020																																																																																																																																																																																																																																																																																																																																																																																																																																																																																																																				
12075-1	12	LC	LC	0.09	0.09	0.09	38.4	38.2	19.1.2020																																																																																																																																																																																																																																																																																																																																																																																																																																																																																																																				
12075-1	13	LC	LC	0.09	0.09	0.09	38.5	38.2	19.1.2020																																																																																																																																																																																																																																																																																																																																																																																																																																																																																																																				
12075-1	14	LC	LC	0.05	0.05	0.05	39.4	38.2	19.1.2020																																																																																																																																																																																																																																																																																																																																																																																																																																																																																																																				
12075-1	15	LC	LC	0.03	0.03	0.03	38.5	38.2	19.1.2020																																																																																																																																																																																																																																																																																																																																																																																																																																																																																																																				
12075-1	16	LC	LC	0.05	0.05	0.05	38.2	38.2	19.1.2020																																																																																																																																																																																																																																																																																																																																																																																																																																																																																																																				
12075-1	17	LC	LC	0.11	0.11	0.11	40.1	38.2	19.1.2020																																																																																																																																																																																																																																																																																																																																																																																																																																																																																																																				
12075-1	18	LC	LC	0.09	0.09	0.09	38.2	38.2	19.1.2020																																																																																																																																																																																																																																																																																																																																																																																																																																																																																																																				
12075-1	19	LC	LC	0.04	0.04	0.04	38.4	38.2	19.1.2020																																																																																																																																																																																																																																																																																																																																																																																																																																																																																																																				
12075-1	20	LC	LC	0.05	0.05	0.05	38.2	38.2	19.1.2020																																																																																																																																																																																																																																																																																																																																																																																																																																																																																																																				
12075-1	21	LC	LC	0.11	0.11	0.11	37.2	38.2	19.1.2020																																																																																																																																																																																																																																																																																																																																																																																																																																																																																																																				
12075-1	22	LC	LC	0.05	0.05	0.05	38.5	38.2	19.1.2020																																																																																																																																																																																																																																																																																																																																																																																																																																																																																																																				
12075-1	23	LC	LC	0.05	0.05	0.05	39.4	38.2	19.1.2020																																																																																																																																																																																																																																																																																																																																																																																																																																																																																																																				
<b>0208 B</b>																																																																																																																																																																																																																																																																																																																																																																																																																																																																																																																													
12075-1	1	LC	LC	0.08	0.08	0.08	38.2	38.2	19.1.2020																																																																																																																																																																																																																																																																																																																																																																																																																																																																																																																				
12075-1	2	LC	LC	0.07	0.07	0.07	37.8	38.2	19.1.2020																																																																																																																																																																																																																																																																																																																																																																																																																																																																																																																				
12075-1	3	LC	LC	0.16	0.16	0.16	39.5	38.2	19.1.2020																																																																																																																																																																																																																																																																																																																																																																																																																																																																																																																				
12075-1	4	LC	LC	0.05	0.05	0.05	38.4	38.2	19.1.2020																																																																																																																																																																																																																																																																																																																																																																																																																																																																																																																				
12075-1	5	LC	LC	0.13	0.13	0.13	38.2	38.2	19.1.2020																																																																																																																																																																																																																																																																																																																																																																																																																																																																																																																				
12075-1	6	LC	LC	0.17	0.17	0.17	38.2	38.2	19.1.2020																																																																																																																																																																																																																																																																																																																																																																																																																																																																																																																				
12075-1	7	LC	LC	0.1	0.1	0.1	37.8	38.2	19.1.2020																																																																																																																																																																																																																																																																																																																																																																																																																																																																																																																				
12075-1	8	LC	LC	0.07	0.07	0.07	38.2	38.2	19.1.2020																																																																																																																																																																																																																																																																																																																																																																																																																																																																																																																				
12075-1	9	LC	LC	0.04	0.04	0.04	38.2	38.2	19.1.2020																																																																																																																																																																																																																																																																																																																																																																																																																																																																																																																				
12075-1	10	LC	LC	0.12	0.12	0.12	37.8	38.2	19.1.2020																																																																																																																																																																																																																																																																																																																																																																																																																																																																																																																				
12075-1	11	LC	LC	0.08	0.08	0.08	38.2	38.2	19.1.2020																																																																																																																																																																																																																																																																																																																																																																																																																																																																																																																				
12075-1	12	LC	LC	0.1	0.1	0.1	38.6	38.2	19.1.2020																																																																																																																																																																																																																																																																																																																																																																																																																																																																																																																				
12075-1	13	LC	LC	0.11	0.11	0.11	38.2	38.2	19.1.2020																																																																																																																																																																																																																																																																																																																																																																																																																																																																																																																				
12075-1	14	LC	LC	0.14	0.14	0.14	38.2	38.2	19.1.2020																																																																																																																																																																																																																																																																																																																																																																																																																																																																																																																				
12075-1	15	LC	LC	0.19	0.19	0.19	38.4	38.2	19.1.2020																																																																																																																																																																																																																																																																																																																																																																																																																																																																																																																				
12075-1	16	LC	LC	0.09	0.09	0.09	38.2	38.2	19.1.2020																																																																																																																																																																																																																																																																																																																																																																																																																																																																																																																				
12075-1	17	LC	LC	0.09	0.09	0.09	38.2	38.2	19.1.2020																																																																																																																																																																																																																																																																																																																																																																																																																																																																																																																				
12075-1	18	LC	LC	0.09	0.09	0.09	38.2	38.2	19.1.2020																																																																																																																																																																																																																																																																																																																																																																																																																																																																																																																				
12075-1	19	LC	LC	0.11	0.11	0.11	38.2	38.2	19.1.2020																																																																																																																																																																																																																																																																																																																																																																																																																																																																																																																				
12075-1	20	LC	LC	0.10	0.10	0.10	38.2	38.2	19.1.2020																																																																																																																																																																																																																																																																																																																																																																																																																																																																																																																				
12075-1	21	LC	LC	0.07	0.07	0.07	38.2	38.2	19.1.2020																																																																																																																																																																																																																																																																																																																																																																																																																																																																																																																				
12075-1	22	LC	LC	0.07	0.07	0.07	38.2	38.2	19.1.2020																																																																																																																																																																																																																																																																																																																																																																																																																																																																																																																				
12075-1	23	LC	LC	0.05	0.05	0.05	39.4	38.2	19.1.2020																																																																																																																																																																																																																																																																																																																																																																																																																																																																																																																				
12075-1	24	LC	LC	0.05	0.05	0.05	39.4	38.2	19.1.2020																																																																																																																																																																																																																																																																																																																																																																																																																																																																																																																				

However all fibres should be tested to ensure that the fibres and the connectors have not been affected by the installation process.

- It will also ensure that
- the system polarity has been correctly managed
  - all the connectors are clean

Note: if the Aginode 25 year system warranty is required, testing and submission of results for certification is a mandatory requirement.



Testing has to be performed according to the Aginode OF field testing procedure which is available from our website (see page 2).

## 7. Fibre identification

The colour code is only applicable to the LANmark-OF SC/LC Pre-Terminated assemblies

Fibre	Colour	
1	Blue	
2	Orange	
3	Green	
4	Brown	
5	Grey	
6	White	
7	Red	
8	Black	
9	Yellow	
10	Violet	
11	Pink	
12	Turquoise	
13	Blue + 1 ring	
14	Orange + 1 ring	
15	Green + 1 ring	
16	Brown + 1 ring	
17	Grey + 1 ring	
18	White + 1 ring	
19	Blue + 2 rings	
20	Orange + 2 rings	
21	Green + 2 rings	
22	Brown + 2 rings	
23	Grey + 2 rings	
24	White + 2 rings	

## **Disclaimer**

This document is a guideline only. International and local procedures and safety standards must be observed and followed at all times.

Aginode Cabling Systems will not be held liable for any damage or injury to personnel, equipment or business directly or indirectly as a result of using this document in part or in whole.

The practices contained herein are designed as a guide for use by persons having the required technical skill at their own discretion and risk. The recommended practices are based on average conditions. Aginode does not guarantee any favourable results or assume any liability in connection with this document.

Aginode does not assume any responsibility for the accuracy or completeness of this document. The user should review the information to ensure conformity to the current applicable codes and regulations and to the project requirements.

Aginode reserves the right to change the technical specifications at any time without notice.

Edition 08.01.2014  
Copyright © Aginode 2014  
All data subject to change  
without prior notice.