

#smartconnection

LAN SYSTEMS



Smart buildings

Catalogue

www.aginode.net



Contents

Three steps to digitally empower your enterprise 6

People & devices	6
Building conditions	6
Network flexibility	7

Aginode's smart choices 8

Support Tables and Information 9

Application speed	9
Power over Ethernet	9
WiFi	9
Guarantees of distances covered	9

LANmark™ Copper solutions 10

LANmark-6 12

LANmark-6 Cable	12
LANmark-6 Snap-In Connector	12
LANmark-6 UniBoot Patch Cords	13

LANmark-6A 14

LANmark-6A Cable F/FTP	14
LANmark-6A Cable FXTTP	14
LANmark-6A Cable S/FTP	15
LANmark-6A Cable F1/UTP	15
LANmark-6A ULTIM Connector	15
LANmark-6A EVO 2.0 Connector	16
LANmark-6A ULTIM UniBoot Patch Cords	16

LANmark-7A 17

for 10/25 Gb/s Ethernet & High Power PoE	17
LANmark GG45 Connector	17
LANmark-7A 1250MHz AWG23 Cable	18
LANmark-7A 1600MHz AWG22 Cable	18
LANmark-6A RJ45 Patch Cord	19
GG45 Measurement Cord	19
LANmark-7A Patch Cord	19
LANmark-7A Conversion Cords	19

Pre-Term Copper Assemblies 20

Installation and time saving	20
Performance	20
Guarantees	20
Product description	20
Single unit assemblies	21
Bundles of Jack-Jack, Jack-Plug or Plug-Plug assemblies	21

Bundles 22

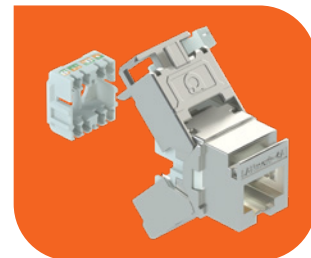
Performance	22
Topology	22
Unique from Aginode: laid up bundles	22
Installation	22

Modular Patch Panels 23

Patch Panel 24 Snap-In	23
Patch Panel 24 Snap-In Sliding	23
Patch Panel 24 Snap-In Black	23

High density panels 24

Angled Patch Panel 24 Snap-In Black	24
Patch Panel 48 ULTIM 1U Black	24



Modular outlets	25
EU Style Angled 45 x 45 Module 2 or 1 Snap-In White.....	25
EU Style Flat 45 x 45 Module 2 Snap-In White.....	25
EU Style 45 x 45 Frame White	25
German Style Angled 50 x 50 Module 2 or 1 Snap-In White.....	26
UK Style Snap-In Modules.....	26
UK Style 50 x 50 and 100 x 50 Frames Flat White.....	26
Tools & accessories	27
Hook & Loop Cable Strap 25m Roll	27
Comfort Tool	27
Easy Termination Tool	27
LANmark Coloured Shutters and Latch Protectors	28
Keystone Clips.....	28
Zone Distribution Boxes	29
ZD Box 12 Snap-In White.....	29
ZD Box 6 Snap-In White.....	29
Ruggedised Lockable ZD Box White.....	29
Ruggedised Lockable ZD Box Foot White.....	29
Secure Lock RJ45 cords	30

LANmark™ Fibre solutions 32

LANmark-OF	34
Snap-In Panels	34
Snap-In Panel	34
Snap-In Panel for Installation of Pre-Terms.....	34
Snap-In Panel Optimised for Splicing	34
Zone Distribution Boxes	35
LANmark-OF Zone Distribution Box 12x Snap-In White.....	35
LANmark Ruggedised Lockable Zone Distribution Box 12x Snap-In White.....	35
LANmark-OF Demarcation Box.....	35
Outlet	36
LANmark-OF 45 x 45 Splicing Outlet 2 Snap-In	36
LANmark Angled Module.....	36
Snap-In Adaptors	37
LANmark-OF Snap-In LC and SC Adaptors	37
LANmark-OF Duplex LC Snap-In Adaptor.....	37
LANmark-OF Duplex SC Snap-In Adaptor	37
LANmark-OF Plug&Play	38
Installation with Plug&Play Adaptor Plates and LC/LC Pre-Terms	38
Optimised for splicing with Plug&Play Adaptor Plates and Pigtails	38
LANmark-OF Plug&Play SC/LC Adaptor Plates.....	39
LANmark-OF Plug&Play Female MPO Modules.....	40
LANmark-OF Plug&Play MPO Adaptor Plates	40
Splicing Accessories for LANmark-OF Panels	41
LANmark-OF Splice Cassette 12 Heat Shrink Protection	41
LANmark-OF Splice Cassette 24 Aluminum Protection	41
LANmark-OF Cover Splice Cassette.....	41
Splicing accessories for LANmark-OF ZD-boxes	42
LANmark-OF Splice Cassette 12 Heat Shrink Protection Small	42
LANmark-OF Splice Cassette 24 Aluminum Protection Small	42
LANmark-OF Splicing Accessories	43
LANmark-OF Fusion Splice Heat Shrink Protectors 45mm 100x	43
LANmark-OF Fusion Splice Aluminum Protectors 150x	43
LANmark-OF Tool for Fusion Splice Aluminum Protection	43
Pigtails	44
LANmark-OF Tight Buffer Pigtails.....	44
LANmark-OF Maxistrip Pigtails	44
LANmark-OF Pigtails Maxistrip or Tight Buffer Set of 12 Colours	44
Patch cords	45
LANmark-OF Slimflex Patch Cords.....	45
LANmark-OF ENSPACE LC-LC Patch cords.....	45
Multimode Patch cords	45
Singlemode Patch cords.....	46



Cables	47
TBUN LANmark-OF Tight Buffer Universal LSZH.....	47
LTUN LANmark-OF Loose Tube Universal LSZH.....	47
UCUN LANmark-OF UC LSZH.....	48
UGUN LANmark-OF UG LSZH.....	48
UCPE LANmark-OF UC PE.....	48
LANmark-OF ENSPACE LC/LC Fibre Assembly.....	49
LANmark-OF ENSPACE MTP/MTP Fibre Assembly.....	49
LANmark-OF ENSPACE Patching Assemblies.....	50
LANmark-OF MTP-MTP Patch Cords.....	51
LANmark-OF Aggregation Assembly.....	51

Guaranteed distances	52
LANmark-OF OM3.....	52
LANmark-OF OM4/OM5.....	52
LANmark-OF OM4/OM5 MPO.....	53
LANmark-OF SM.....	53
LANmark-OF SM MPO.....	54

LANmark Power-OF	55
LANmark Power-OF cable.....	55
LANmark Power-OF box.....	55
LANmark Power-OF panel.....	55

LANmark™ Cabinet Rack Unit Solution **56**

Rack Solutions	58
Cabinet Rack Unit Solution	58
Cabling Smart Building Rack.....	58
Server Data Center Rack.....	58
Rack management	59
Covered Patch Guide 1U.....	59
Covered Patch Guide 2U.....	59
Metal Ring Patch Guide 1U.....	59
Metal Ring Patch Guide 2U Black.....	59
Blank Panel 1U Black.....	59
Overhead Patching Frame 4U or 6U.....	60
Pair of Patch Cord Management Hooks Black for Overhead	
Patching Frame 4U and 6U.....	60
Rack accessories	61
Shelves.....	61
Fan.....	61
Plinth.....	61
Wheels.....	61
Internal cable tray.....	61



LANactive FTTO systems **62**

LANactive FTTO systems **64**

GigaSwitch family	66
7-Port FTTO Switch with up to three SFP Uplinks for 54V DC.....	66
7-Port FTTO Switch with two SFP Uplinks and 54V DC Powered.....	66
7-Port FTTO Switch with one SFP Uplink and 54V DC Powered.....	67
6-Port FTTO Switch with one or two SFP Uplinks	
and 230V ACP powered.....	67

Medical series	68
7-Port FTTO Switch with two SFP uplinks and 54V DC powered,	
Medical series.....	68
6-Port FTTO Switch with one or two SFP uplinks and 230V AC	
powered, Medical series.....	68

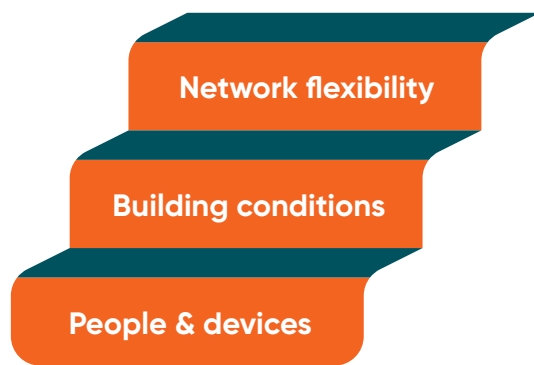


Industrial series	69
7-Port FTTO Switch with two SFP uplinks and 54V DC powered, Industrial series	69
6-Port FTTO Switch with one SFP uplink and 230V AC powered, Industrial series	69
LANactive PoE++ Head	70
Memory Cards	70
LANactive DICE systems	72
XGigaSwitch DICE	73
XGigaSwitch DICE 8TP 2SFP+ AC	74
XGigaSwitch DICE 8TP 2SFP+ DC	74
iOption PoE+ or PoE++	74
LANactive DICE accessories	75
Memory Cards	75
Desktop Power Supply 54VDC	75
Desktop Power Supply 54VDC	75
Mounting Kit for Power Supply 240W	75
19" Mounting Kit	76
DIN-Rail Mounting Kit	76
Mounting Plate	76
Strain-relief	77
DICE Mounting Frame	77
DICE Mounting Frame Cable Protection	77
iGigaSwitch Series	78
Managed Industrial Ethernet switches	78
iGigaSwitch Systems	80
iGigaSwitch 10xx (18 ... 60V DC)	80
iGigaSwitch 10xx (12/24V DC)	80
iGigaSwitch 1202 HSR (AC)	80
iGigaSwitch 16xx (18 ... 60V DC)	81
iGigaSwitch 1606 HSR (18 ... 60V DC)	81
iGigaSwitch 1606 HSR (AC)	82
iOption I/O Digital 4xIn 2xOut 230V for iGigaSwitch 12xx and iGigaSwitch 16xx	82
iGigaSwitch 1002E+ MACsec	82
iGigaSwitch Accessories	84
iOption PoE+ or PoE++	84
Memory Cards	84
DIN-Rail Mounting Kit	84
Console Cable	85
iPowerSupply	85
LANactive accessories	86
SFP Modules	86
Click-In installations power supply	87
LANactive Manager Software	88
LANactive Manager	89
Training, Support & Warranty	90
Training	92
e-Learning	92
In-class Training	92
Warranty	93
Link Warranty	93
Certified Solution Warranty	93
Support	94
Aginode Visio Template 5.0 (AVT) Software	94
Support LANactive	94
Installer programs	95



Three steps to digitally empower your enterprise

To meet explosive growth in demand for bandwidth and functionalities, and ensure cabling, connectivity and networks hold up in an increasingly demanding environment, a digital transformation is needed. Aginode's three-step approach makes it easier to find a solution, as there's no 'one size fits all' answer.



People & devices

What type and level of performance do your organisation's users and devices require? Not only right now, but also in the future.

Building conditions

Which specific conditions exist in your building(s)? Which distances need to be bridged? Are there specific requirements with regard to functionality or uptime?

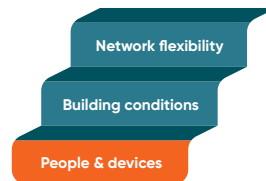
Network flexibility

How flexible does your network need to be to accommodate probable future requirements? How do you ensure this is the case?



People & devices

Balancing data and power



When selecting a cabling system, you need to consider the people and devices that will be relying on the network. The performance they need will depend on

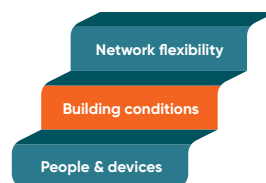
emerging standards, which in turn will act as a driver for increased bandwidth and power over the network. To meet current bandwidth requirements, using Category 6A for each Wireless Access Point (WAP) is recommended, making multimode OM4 fibre a likely minimum requirement for the backbone.

Wireless is an especially important contributor to today's increased demand. As speed and bandwidth go up, reach goes down. So, you need more WAPs to cover the same surface area. What's more, the next generation of Power over Ethernet (PoE) can provide up to 90 Watts, making it possible to power devices such as monitors or charge laptops.

Building conditions

Keeping building-specific conditions in mind helps find optimum solutions for your enduring digital infrastructure.

Limited space for cabling



Often, indoor space is limited, and structural changes can't be made. There may be limited space for cable trays or distributions rooms. Here a Fibre To The Office (FTTO)

solution can help. Less hardware is required, saving installation time, equipment cost and surface area.

Distances: need for extended reach?

Copper cabling has an inherent 90-metre length restriction. High-grade multimode or even single mode fibre in an FTTO set-up can bring significant savings and extended drive distances can also help. Increased bandwidth demand, moving towards 40G, means distances supported by (usually multimode) fibre backbones must be carefully considered..

Harsh conditions

Performance of network equipment and cabling in harsh conditions can be affected by extreme temperatures, Electromagnetic Interference, crushing, pulling, exceeding the bend radius and so on. This may result in downtime in applications where it is least acceptable. Knowing intended usage and environmental factors across locations helps define solutions that improve performance where it counts, without compromising in other areas.

Optimal fire performance and load

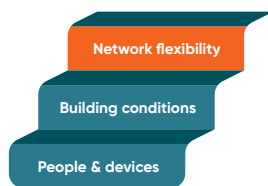
Cables used in buildings and other civil works are assessed with regard to 'reaction to fire'. Cabling in different areas, such as hospitals and escape routes, must comply with specific demands. This needs to be factored in when choosing solutions. For copper and fibre cables, different fire performance classes and three additional criteria (smoke production, flaming droplets and acidity) are newly defined conform the Construction Products Regulation (CPR) with different countries prescribing different levels. Using less cable with, for example, a fibre ring for FTTO reduces overall fire load.

Security

Disconnection can disturb operations or cause full-scale system failures, leading to costly fault tracking and repair. At physical level, Aginode Secure Lock feature prevents unauthorized patch cord connection or disconnection – vital in high-risk areas such as military, education, hospitals and CCTV Systems. Automated Infrastructure Management systems are indispensable in pinpointing the physical location of connected devices.

Network flexibility

Planning: a lifetime of adaptations



The way in which a building is used is likely to change over time. The number of people can increase or decrease, and new applications may be introduced. Working

with Service Consolidation Points (SCPs), mainly located above the ceiling, are widely considered best practice. From here, devices such as WAPs and cameras can be connected, as well as workplaces. Adapting to changes in how the office space is used requires no more than a change of cabling from SCPs to the devices and workplaces. You can consider making the SCP passive, active, managed or unmanaged.

Management & administration

Today's vast, complex and constantly evolving systems need automated monitoring, control and asset management. To satisfy compliance and legal requirements you'll need network device



recovery, incident management, status reports and audit trails. Precise mapping of switches makes it possible to track and repair faults or configuration errors fast, saving considerable time tracking and fixing faults. Tasks must be automated and centrally managed, reducing operational costs, improving asset management and utilisation and simplifying deployment of new services.

Redundancy

Connectivity is key to daily operations of businesses and institutions everywhere, making ample bandwidth reserves and redundancy essential. How much redundancy do you need to maximise availability at distributor level (with redundant backbone) or at user level (which can be achieved with FTTO)?

Lower footprint – growth versus energy consumption

To date, enterprise buildings have always consumed a considerable portion of the world's energy, giving rise to 'Green Building' initiatives. There is a clear and growing demand for improved building energy efficiency.

However, as we add more hardware to accommodate current and future needs, energy usage can only go up... The challenge is to reduce energy expenditure as more and more devices are added. Preparation, monitoring and smart application of currently available technology helps increase bandwidth and power to a growing number of devices, without compromising your sustainability goals.

Optimising Total Cost of Ownership (TCO)

Saving money by opting for 'just adequate' cabling can affect performance, but using the highest performing cable for every inch of the network is costly and pointless. You also need to consider the effort and cost related to maintenance, Moves Adds and Changes and installation. Taking time to select the correct type and quality for each part of the network really pays off in the long run.

Aginode's smart choices

Aginode's range of practical solutions offers the right performance for every business and environment. These exceed the requirements of all relevant standards, ensuring your network performs better and more reliably. Our expertise and far-reaching involvement in the development of standards means we always find the right solution.

Determining current and future requirements results in faster, more efficient rollouts, solutions that perform exactly as specified, optimised TCO, enhanced energy efficiency and systems that will remain in business for years to come.

LANmark™

Flexible architectures for any environment

- Improved reliability and performance
- More ports, more connections, longer links, cost-effective bandwidth
- Perfect balance of copper and fibre for every application

LANactive

Fibre To The Office (FTTO):
the alternative LAN solution

- Vast savings on time, space and cost
- 'Pay-as-you-grow' concept allows expansion according to needs
- Copper and fibre combined for best performance, scalability and flexibility

Support Tables and Information

Application speed

	PAST	PRESENT
Cat 6	1G	2.5G & 5.0G
Cat 6A	10G	10G
Cat 7A	10G	25G

Power over Ethernet

	2003 PoE - Type 1 IEEE 802.3af	2009 PoE+ - Type 2 IEEE 802.3at	2018 PoE++ - Type 3 IEEE 802.3bt	2018 PoE++ - Type 4 IEEE 802.3bt
Power sent	15.4W	30W	60W	90W
Power delivered	12.95W	25.50W	51W	71W
Number of pairs	2	2	4	4

WiFi

	2009 IEEE 802.11n	2013 IEEE 802.11ac	≈ 2020 IEEE 802.11ax
Antennas	Access Points Peak Data Rates (theoretical maximum)		
1x1	150 Mbps	866 Mbps	≈ 3.4 Gbps
2x2	300 Mbps	1.7 Gbps	≈ 6.8 Gbps
4x4	450 Mbps	3.4 Gbps	≈ 13.6 Gbps
8x8	600 Mbps	6.9 Gbps	≈ 27.6 Gbps
Reach	~ 70 m	~ 35 m	~ 10 - 20 m

Guarantees of distances covered

The standards (ISO/IEC, EN and EIA/TIA) are based around a maximum provide channel length of 100m. In the event of a request for a specific "application guarantee", Aginode provides cover for the longest channels according to the type of application. This provision only applies when Aginode products are used exclusively along the channel in question.

Application Drive Distance (m)		LANmark Channel					
		Unscreened		Screened			
		Cat.6	Cat.6	Cat.6A AWG 23	Cat.6A AWG22**	Cat.7A AWG 23	Cat.7A AWG22
10Base-T (Ethernet)	Without PoE	177	177	177	177	177	177
	With POE	130	130	145	160	165	177
100Base-T (Fast Ethernet)	Without PoE	140	140	145	160	145	160
	With POE	130	130	145	160	145	160
1000Base-T (Gigabit Ethernet)	Without PoE	100	115	145	160	145	160
	With POE	100	115	145	160	145	160
2.5GBase-T (2.5 Gigabit Ethernet)	Without PoE	100	100	125	135	125	135
	With POE	100	100	125	135	125	135
5GBase-T (5 Gigabit Ethernet)	Without PoE	100	100	125	135	125	135
	With POE	100	100	125	135	125	135
10GBase-T (10 Gigabit Ethernet)	Without PoE	N/A	N/A	105	125	105	125
	With POE	N/A	N/A	100	100	100	100

- Distances are valid
 - For 2-connector channel configurations
 - For PoE Type 4 (IEEE 802.3bt)
 - At 20°C. For operating temperatures up to 60°C, the length shall be reduced according to ISO/IEC 11801-2
- Indicated channel lengths include 5m total cordage (e.g. 2m + 3m patch cord)
- For Cat.7A channels, GG45/RJ45 conversion cords are to be used Aginode ref. N101.2DAXO

* U/UTP extended drive distances apply only to discrete unbundled cable runs which must be installed so as to avoid the effects of alien crosstalk.

** Based on ULTIM connectivity.

LANmark™

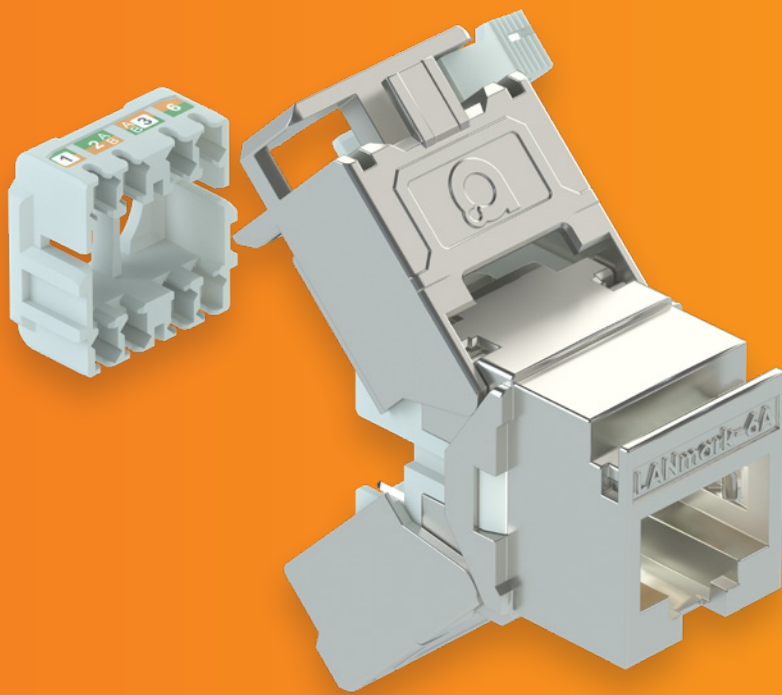
Copper solutions



**More
data**



**More
power**



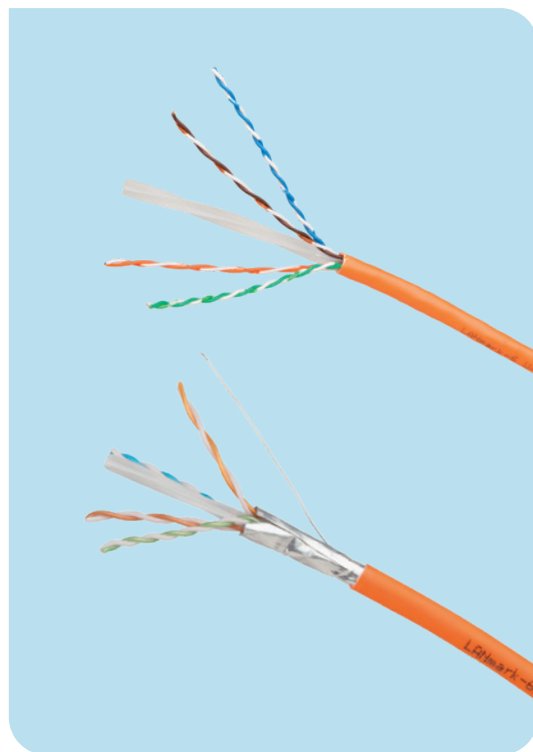
LANmark-6

Aginode LANmark-6 cabling systems are the ideal solution for most of today's network requirements in normal office environments. LANmark-6 cables and connectivity are manufactured and tested to the latest Cat 6 specifications defined in the International, European and American cable and cabling standards, including ISO 11801, EN 50173-1 and TIA-568.2-D. LANmark-6 components are designed to meet or exceed the quality and performance criteria needed to support all applications up to 250 MHz, including 2.5Gbps and 5GBase-T.

- Ideal solution for most common enterprise applications such as Fast Ethernet and Gigabit Ethernet.
- Matched components ensuring minimised signal loss and maximum throughput.
- Exceeding standard Channel performance requirements ensuring a reliable network.
- Supports application drive distances above 100m for Ethernet, Fast Ethernet and Gigabit Ethernet.
- 25-year full system warranty

LANmark-6 Cable

- U/UTP and F/UTP constructions
- Complies to all Cat 6 cable standards
- Supports all Class E applications including PoE/PoE+
- Central cross member maintains geometry and performance
- Tested up to 350MHz
- Compliant with IEC 61156-5, EN 50288-1 and TIA-568.2-D cable standards for Cat 6
- Shielded version has aluminium side facing outwards ensuring easy bonding with connector
- LSZH orange sheath meeting IEC 60332-1 and EuroClass Eca or Dca
- Available in EuroClass Cca, also meeting IEC 60332-3



LANmark-6 Snap-In Connector

- Available in unshielded and shielded version
- Wire organiser reduces risk of installation errors and ensures consistent performance
- Wiring according to colour code T568B or T568A
- Reterminable
- Accepts solid and stranded wire
- Supports PoE+ and PoE++ applications
- An adapter can be added to fit the keystone format



LANmark-6 UniBoot Patch Cords

- Compliant with all Cat 6 cabling and component standards
- Fully matched with LANmark-6 cable and connector ensuring maximum channel performance
- LSZH Flame retardant jacket
- Black removable latch protector, replaceable with 7 other colours, offering possibility of differentiation between services



Reference

N100.607-OE

N100.605-OE

N100.605-OD

N100.605-OC

N100.624-OD

N420.660-03

N420.686-01

N116.P1AxxxOK

N116.P1AxxxDK

N110.LPX

N420.567

N420.110

Description

LANmark-6 U/UTP AWG23 Cat 6 350MHz LSZH Eca Orange 305m box

LANmark-6 U/UTP AWG23 Cat 6 350MHz LSZH Eca Orange 500m reel

LANmark-6 U/UTP AWG23 Cat 6 350MHz LSZH Dca s2 d2 a1 Orange 500m reel

LANmark-6 U/UTP AWG23 Cat 6 350MHz LSZH Cca s1a d1 a1 Orange 500m reel

LANmark-6 F1/UTP AWG24 Cat 6 350MHz LSZH Dca s2 d1 a1 Orange 500m reel

LANmark-6 Evo Snap-In Connector Cat 6 Unscreened

LANmark-6 EVO 2.0 Snap-In Connector Cat 6 Screened

LANmark-6 Patch Cord Cat 6 Unscreened LSZH Orange

LANmark-6 Patch Cord Cat 6 Unscreened LSZH Grey

LANmark Latch Protector 50x ("X" denoting colour: B = Blue, D = Dark Grey,

G = Green, O = Orange, R = Red, Y = Yellow, W = White)

Universal Comfort Tool (for N420.660-03)

Cable Stripper 25x

LANmark-6A

for 10Gb/s Ethernet & High Power PoE

Aginode LANmark-6A cabling system is today's standard solution for Enterprise and Data Centre environments, offering guaranteed bandwidth to 500 MHz and therefore supporting 10G-BaseT, currently the highest performing application over horizontal copper cabling.

LANmark-6A cables and connectivity are manufactured and tested to the latest Cat 6A specifications defined in the International, European and American cable and cabling standards, including ISO 11801, EN 50173-1 and TIA-568.2-D

The LANmark-6A range supports short channel lengths down to 9m with 3 connection points (and 12m with 4 connection points). This makes it an ideal solution for modern Data Centres that are already facing severe space problems and where overlength cable is often installed in order to comply with the standard recommended minimum channel length of 24m. By reducing this minimum length, Data Centres

no longer need to install unnecessary excess cable, therefore reducing costs whilst also saving critical space.

- Guaranteed superior channel headroom for: NEXT (2dB) - Return Loss (2dB) - Alien Crosstalk (15dB)
- Interoperability due to Cat 6A component compliance
- Ability to install very short links, crucial in Data Centres

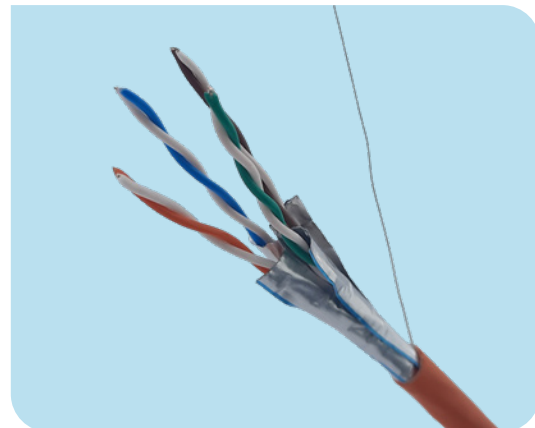
LANmark-6A Cable F/FTP

- Ideal cable for 10Gbase-T applications
- Full compliance with latest standards for Cat 6A and Class EA
- Guaranteed performance up to 500MHz
- Combination of global and individual pair shielding offering ANEXT and EMI immunity
- Standard LSZH version meeting IEC 60332-1 and EuroClass Dca
- Available in EuroClass Cca, also meeting IEC 60332-3



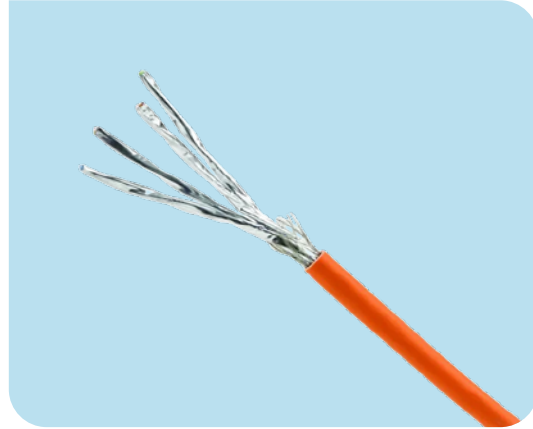
LANmark-6A Cable FXTP

- Innovative foil design combining global and individual pair shielding offering ANEXT and EMI immunity
- Ideal cable for 10Gbase-T applications
- Full compliance with latest standards for Cat 6A and Class EA
- Guaranteed performance up to 500MHz
- Installs as F/UTP, performs as F/FTP
- Standard LSZH version meeting IEC 60332-1 and EuroClass Dca
- Available in EuroClass Cca, also meeting IEC 60332-3



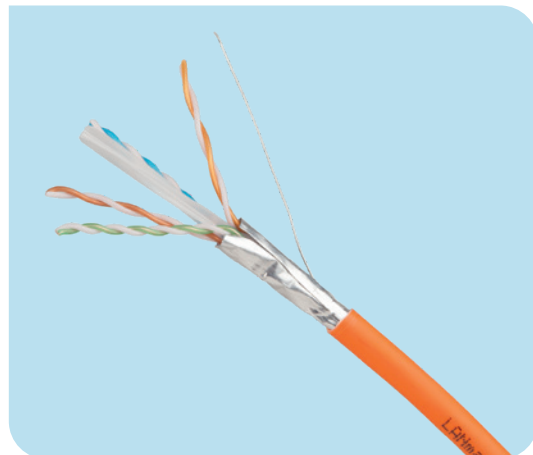
LANmark-6A Cable S/FTP

- Ideal cable for 10Gbase-T applications
- Full compliance with latest standards for Cat 6A and Class EA
- Guaranteed performance up to 500MHz
- Individual pair shielding with global braid offering ANEXT and EMI immunity
- Standard LSZH version meeting IEC 60332-1 and EuroClass Dca
- Available in EuroClass Cca and B2ca, also meeting IEC 60332-3



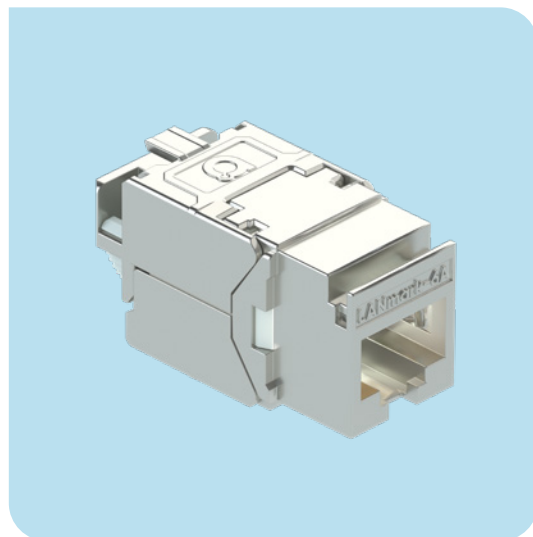
LANmark-6A Cable F1/UTP

- Ideal cable for 10Gbase-T applications
- Full compliance with latest standards for Cat 6A and Class EA
- Guaranteed performance up to 500MHz
- Global screen offering ANEXT and EMI immunity
- Foil with aluminium side facing outwards providing easy bonding to connector
- Offering same ease of installation as UTP cables, but with full protection against noise
- Standard LSZH version meeting IEC 60332-1 and EuroClass Dca
- Available in EuroClass Cca, also meeting IEC 60332-3.



LANmark-6A ULTIM Connector

- High speed Category 6A shielded connector
- Full compliance with TIA and ISO Category 6A cabling and connector standards
- Superior headroom thanks to new engine technology
- 3rd party certified for connecting hardware, Link and Channel
- PoE++ Type 4 certified, supporting applications delivering up to 90W
- Die-cast housing offering excellent EMC and Alien Crosstalk performance
- One-piece toolless design for fast and easy installation
- Accepts solid and stranded wire from AWG26 to AWG22
- Sustainable packaging: zero plastic, 100% recyclable



LANmark-6A EVO 2.0 Connector

- High speed Category 6A shielded connector
- Full compliance with TIA and ISO Category 6A cabling standards
- Supports PoE++ Type 4 applications delivering up to 90W
- Die-cast housing offering excellent EMC and Alien Crosstalk performance
- Toolless design for fast and easy installation
- Accepts solid and stranded wire from AWG26 to AWG22
- Sustainable packaging: zero plastic, 100% recyclable



LANmark-6A ULTIM UniBoot Patch Cords

- High speed RJ45 patch cord to run 10Gbase-T and future Cat 6A applications
- High density support due to slim boot design
- Frequency range up to 500MHz, fully compliant with Cat 6A TIA-568.2-D and ISO 11801:2017
- Individually screened pairs offering internal and external noise immunity
- Black removable latch protector, replaceable with 7 other colours, offering possibility of differentiation between services



Reference

N100.624G-OD
N100.623G-OD
N100.622G-OC
N100.654G-OD
N100.654G-OC
N100.684G-OD
N100.684G-OC
N100.684G-OB
N100.694G-OD
N100.693G-OD
N100.693G-OC
N420.960
N420.68A-01
N11A.U1FxxxOK
N11A.U1FxxxDK

Description

LANmark-6A F1/UTP AWG23 Cat 6A LSZH Dca s2 d1 a1 Orange 500m reel
 LANmark-6A F1/UTP Dual AWG23 Cat 6A LSZH Dca s2 d2 a1 Orange 500m reel
 LANmark-6A F1/UTP AWG23 Cat 6A LSZH Cca s1a d1 a1 Orange 1000m reel
 LANmark-6A FFTP AWG23 Category 6A LSZH Dca s2 d1 a1 Orange 500m reel
 LANmark-6A FFTP AWG23 Category 6A LSZH Cca s1a d1 a1 Orange 500m reel
 LANmark-6A S/FTP AWG23 Category 6A LSZH Dca s2 d1 a1 Orange 500m reel
 LANmark-6A S/FTP AWG23 Category 6A LSZH Cca s1a d1 a1 Orange 500m reel
 LANmark-6A S/FTP AWG23 Category 6A LSZH B2ca s1a d1 a1 Orange 500m reel
 LANmark-6A F/FTP AWG23 Cat 6A LSZH Dca s2 d1 a1 Orange 500m reel
 LANmark-6A F/FTP Dual AWG23 Cat 6A LSZH Dca s2 d1 a1 Orange 500m reel
 LANmark-6A F/FTP Dual AWG23 Cat 6A LSZH Cca s1a d1 a1 Orange 500m reel
 LANmark-6A ULTIM Snap-In Connector Category 6A Screened
 LANmark-6A EVO 2.0 Snap-In Connector Category 6A Screened
 LANmark-6A ULTIM Patch Cord Cat 6A Screened LSZH Orange
 LANmark-6A ULTIM Patch Cord Cat 6A Screened LSZH Grey
 ("xxx" denoting length: 010 = 1m, 020 = 2m, 100 = 10m)
 LANmark Latch Protector 50x ("X" denoting colour: K = Black, B = Blue,
 D = Dark Grey, G = Green, O = Orange, R = Red, Y = Yellow, W = White)
 Cable Stripper 25x

N110.LPX

N420.110

LANmark-7A

for 10/25 Gb/s Ethernet & High Power PoE

To accommodate converged applications, you need cabling that offers the ideal balance between delivering bandwidth AND power. LANmark-7A has capacity to support 25GB's and is the best solution for transmitting high power PoE. Cat 7A is the highest grade for Enterprise cabling defined by international standards.

Cat 7A / Class FA is standardised by ISO/IEC, the only worldwide standardisation body and applicable everywhere. It defines cabling up to at least 1000 MHz and at least 100m distance. Cat 7A is the "best in class" for Enterprise cabling and should be used always when Buildings are owned, not rented, and the cabling shall last 2 decades or even longer.

LANmark-7A can today be used to run 10G (even longer than 100m, up to 125m) and also prepared for a next application to come in Enterprise networking like 25Gigabit. The first step towards 25G networking has already been made in 2016 with the definition of a short reach Data centre application: 25GBASE-T according to IEEE802.3bq with 30m maximum length.

Can 25Gbase-T be used for Enterprise Cabling?

Like in Data centres, also Enterprise servers move up in network speed. Most Enterprise networks saw the first servers, demanding more than 10G already in 2020. 1 Gbps is now fully replaced by 10 Gbps and Enterprise servers already use 25G or more.

LANmark-7A also supports extended drive distance for 25 GBASE-T of ~ 40m and this enables to also connect High Speed Wireless Access Points with 25GBASE-T. In combination with 20-35m Wireless reach a good coverage for 70m for end devices is possible.

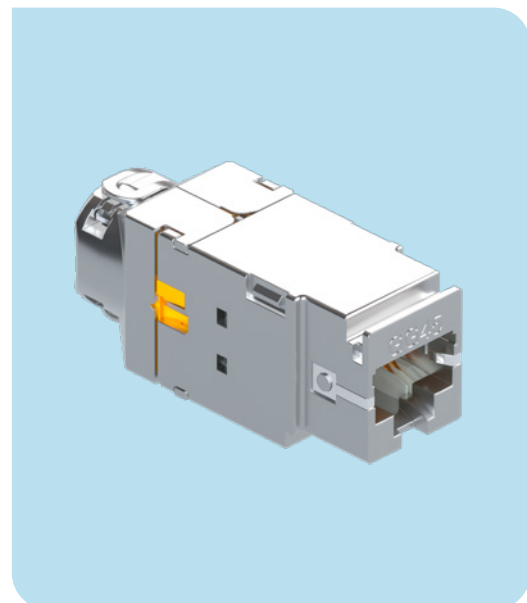
LANmark-7A is also 'Best in Class' for PoE cabling. PoE++ or High Power PoE uses power levels where cabling contributes the largest part of the power losses. The longer the cable the more power reduction by cabling is seen. But these power losses can be reduced making the right choice of the cabling grade. The better the cables the smaller the power losses. Almost 40% of the cabling related power loss (21W) can be saved with the Best in Class LANmark-7A Cable (13W).

LANmark GG45 Connector

LANmark GG45 is a screened RJ45-compatible cable jack specified up to 2000 MHz. It is designed specifically to support the high frequencies required for applications beyond 10 Gigabit Ethernet.

- Combined with LANmark-7A Cable and Patch Cords, GG45 offers support for 25Gbase-T.
- Combined with a LANmark-8 2GHz cable, GG45 offers support for 40Gbase-T.

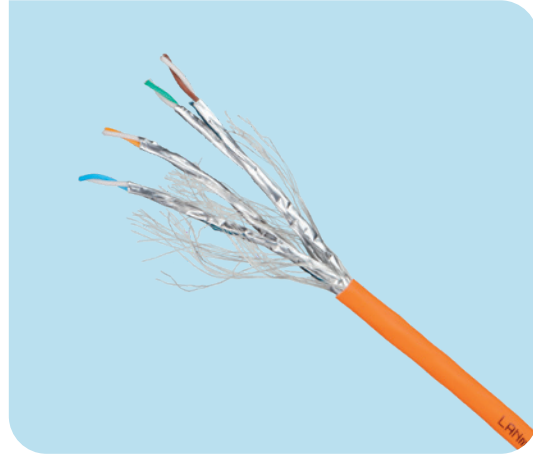
LANmark GG45 uses 12 contacts: 8 contacts for the 2000MHz transmission (GG-mode) and 4 additional contacts to ensure RJ45 compatibility (RJ Mode). Thanks to its 360° screening and a fully closed rear cover, the connector allows excellent coupling attenuation and ensures immunity from alien crosstalk and other external interference. The LANmark GG45 connector fits in all structural hardware designed for the Snap-In Connectors and can be used in all positions of a 4 connector twisted pair cabling channel (PP, CC, CP, TO).



LANmark-7A 1250MHz AWG23 Cable

LANmark-7A S/FTP AWG23 cable has individual pair foils and an overall braid offering superior performance up to 1250 MHz. The cable is fully compliant with Category 7A standards for Enterprise and Data Centre use cases. It supports 10Gbase-T over 100m and 25 Gbase-T over 30m. In combination with GG45 connectivity also extended drive distances can be supported.

- Largely reduced noise levels to support high Signal to Noise Ratios
- Double Screening makes cables immune against Alien Crosstalk
- Energy Savings of 5 Watts/100m using POE++ (compared to Cat 5)
- 2 Watts/100 less than Cat6A
- 31% reduction of cabling related losses



LANmark-7A 1600MHz AWG22 Cable

LANmark-7A 1600 S/FTP AWG22 cable has individual pair foils and an overall braid offering superior performance up to 1600 MHz. The cable is fully compliant with Category 7A standards for Enterprise and Data Centre use cases. It supports 10Gbase-T over 100m and 25Gbase-T over 30m. In combination with GG45 connectivity also extended drive distances can be supported.

- Largely reduced noise levels to support high Signal to Noise Ratios
- Double Screening makes cables immune against Alien Crosstalk
- Energy Savings of 3 Watts/100m using PoE++ are possible. Energy Savings of 5,3 Watts/100m using PoE++ (compared to Cat 5 U/UTP)
- 2,45 Watts/100m compared Cat 6A F/UTP
- 33% reduction of cabling related losses



LANmark-6A RJ45 Patch Cord

To connect a LANmark-7A Permanent Link to a RJ45 Server Ports normal RJ45 can be used (see LANmark-6A Range). This reduces the investment cost during the time of 1Gb/s and 10Gbase-T networking.



GG45 Measurement Cord

Aginode GG45 to GG45 Measurement Cords with GG45 8C Plug on both sides support verification testing in Field installations using Channel adaptors.

LANmark-7A Patch Cord

- High bandwidth patch cord for Cross Connects, concatenation of GG45 based permanent links or
- Cat 7A Consolidation Points
- Runs the GG45 '2in1' Connector in its high-speed GG-Mode
- Uses GG45 8 Contact Plugs according IEC61076-3-110
- Allows full 4-connector Class FA channels
- Compatible with High Density requirements in Data Centres



LANmark-7A Conversion Cords

- High bandwidth patch cords converting GG45 to RJ45 to connect GG45 links with RJ45 type active equipment
- Enhanced channel headroom compared to RJ45 only cords
- Required to reach extended drive distance for 10G

Reference

N100.371-OC
N100.371-OD
N100.372-OD
N100.373-OD
N100.381-OB
N100.381-OD
N100.383-OD
N420.735
N420.736
N101.2DACO
N101.2DAEO
N101.2DAFO
N101.23AEO
N101.23AFO
N101.23AHO
N900.67A

Description

LANmark-7A 1250 S/FTP AWG23 Cat 7A 1250MHz LSZH Cca s1a d1 a1 Orange 1000m reel
 LANmark-7A 1250 S/FTP AWG23 Cat 7A 1250MHz LSZH Dca s2 d1 a1 Orange 1000m reel
 LANmark-7A 1250 S/FTP AWG23 Cat 7A 1250MHz LSZH Dca s2 d1 a1 Orange 500m reel
 LANmark-7A 1250 S/FTP Dual AWG23 Cat 7A 1250MHz LSZH Dca s2 d1 a1 Orange 500m reel
 LANmark-7A 1600 S/FTP AWG22 Category 7A 1600MHz LSZH B2ca s1a d1 a1
 LANmark-7A 1600 S/FTP AWG22 Cat 7A 1600MHz LSZH Dca s2 d1 a1 Orange 1000m reel
 LANmark-7A 1600 S/FTP Dual AWG22 Cat 7A 1600MHz LSZH Dca s2 d1 a1 Orange 500m reel
 LANmark-7A GG45 12C Snap-In Connector Cat 7A 1000MHz Screened
 LANmark-7A GG45 12C Snap-In Connector Cat 7A 1000MHz Screened for stranded wire
 LANmark-7A Patch Cord GG45 8C to RJ45 Screened LSZH Orange 1m
 LANmark-7A Patch Cord GG45 8C to RJ45 Screened LSZH Orange 2m
 LANmark-7A Patch Cord GG45 8C to RJ45 Screened LSZH Orange 3m
 LANmark-7A Patch Cord GG45 8C Cat 7A Screened LSZH 2m Orange
 LANmark-7A Patch Cord GG45 8C Cat 7A Screened LSZH 3m Orange
 LANmark-7A Patch Cord GG45 8C Cat 7A Screened LSZH 5m Orange
 GG45 8C Measurement Cord Cat 7A Screened LSZH 2m Orange

Pre-Term Copper Assemblies

Pre-Terminated Copper assemblies can be Jack to Jack or Jack to Plug prefabricated units of single 4-pair cables, but most of the time are assemblies of multiple cables into bundles. As opposed to parallel bundled cables, which often have instable performance on higher frequencies during installation, LANmark Pre-Term assemblies are using sophisticated in-house bundling technology and keep full installation flexibility and bending capability in combination with stable electrical performance. We offer bundles with 6, 12 and 2x12 cables, but also other sizing can be made on request.

All assemblies are created in a controlled manufacturing environment. This ensures that all termination and bundling procedures are consistent, repeatable and reliable. All assemblies are individually tested, and test reports are stored for traceability purposes.

Guarantees

Aginode LANmark Pre-Terms are covered by a 25-year parts and labour warranty as described in the Aginode Certified System Warranty. When installed in combination with LANmark patch cords of the same category, a channel warranty can be obtained. Aginode Design Guidelines for length calculations and limitations according to the standards must be respected.

Product description

The range of pre-terminated copper assemblies includes both single units and bundles in Category 6A and 7A:

- Jack-Jack assemblies: 4 pair cable terminated with LANmark Snap-In jacks at both ends
- Jack-Plug assemblies: 4 pair cable terminated with a LANmark Snap-In jack at one end and a LANmark plug at the other end
- Long length Plug-Plug assemblies: 4 pair cable terminated with LANmark plugs at both ends

These units can be further assembled to form bundles of 6, 12 or 2x12 units

Example of Test report

Installation and time saving

Aginode LANmark Pre-Term Units help reduce the installation time and risks as field connector termination is eliminated. Connectors are mounted and assemblies are tested in our factory. These features drastically reduce on-site installation time enabling massive cabling deployments in Data Centres within a very short time.

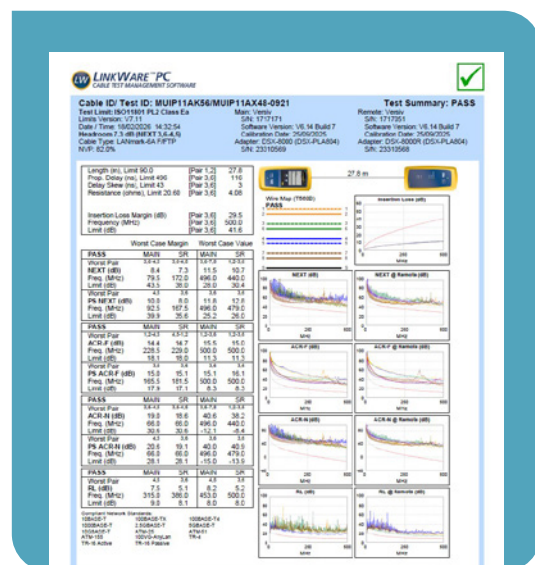
Each assembly is labelled with a traceability number and a link reference specified by the customer.

All modular structural hardware items designed for the Snap-In range can be used in all positions of a 4 connector twisted pair cabling channel (PP, CC, CP, TO).

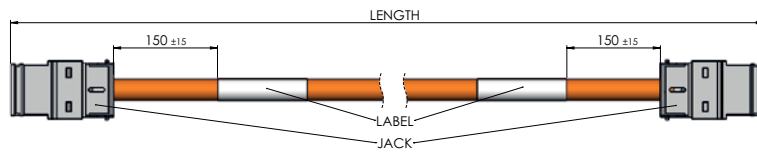
- Fast and straightforward installation
- No on-site termination
- Reduce installation time
- No risk linked to field termination
- Supports 4 connectors channel configurations
- Labelling on each assembly (customisable)
- Factory tests in electronic format available on request

Performance

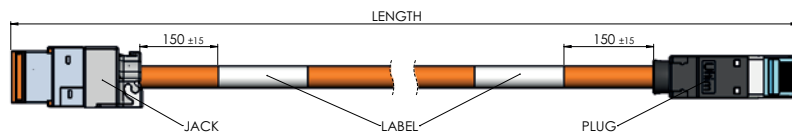
Cat 6A/Class EA, Cat 7A/Class FA headroom and bandwidth above the given category requirements according to the international, European and American standards especially for NEXT/FEXT, Power Sum NEXT/FEXT, Alien Crosstalk and Return Loss parameters are guaranteed. When used in combination with LANmark patch cords of the same category the full connector channel is guaranteed as well.



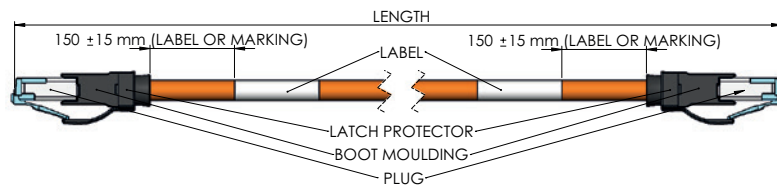
Single unit assemblies



Jack-Jack

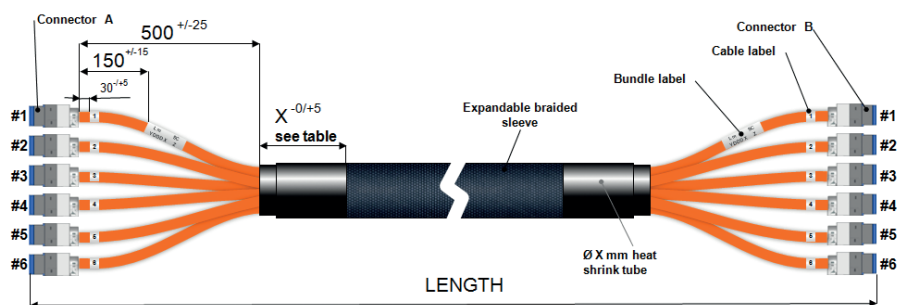


Jack-Plug



Plug-Plug

Bundles of Jack-Jack, Jack-Plug or Plug-Plug assemblies



Bundles

LANmark Pre-Term bundles are assemblies of 6, 12 or 2x12 pre-terminated single units. These can be Jack-Jack, Jack-Plug or Plug-Plug units. These units are maintained together as a bundle with a braided sleeve. LANmark Pre-Term bundles are well suited for areas where installation time is limited. Bundles of shielded units ensure immunity against Alien Crosstalk and other external interferences. Bundles of shielded units do not require on-site testing for Alien Crosstalk since this parameter is met by design.

Performance

Pre-Term assemblies can be produced in Cat 6A/Class EA and Cat 7A/Class FA. Headroom and bandwidth over and above the given category requirements according to the international, European and American standards especially for NEXT/FEXT, Power Sum NEXT/FEXT and Return Loss parameters are guaranteed. When used in combination with horizontal cabling and LANmark patch cords of the same category the full four-connector channel is guaranteed as well.

Topology

This type of assembly is ideal in Data Centres and for horizontal distribution.

Unique from Aginode: laid up bundles

Bundles are usually made of single units running parallel. The negative effect of this is that the units slide against one another during winding and unwinding. The alignments of the connectors can't be maintained.



Single units from Aginode are cabled to form laid up bundles. This makes sure that connectors' alignment is maintained. This also makes the bundle more flexible and easier to install.

Bundled units are ideal to be installed between server racks or patch panels and consolidation points.

Installation

Aginode LANmark Pre-Term bundles help reduce installation time. Only a single assembly needs to be laid instead of 6, 12 or 24 individual cables. Furthermore, connector termination is simply eliminated, therefore eliminating field termination risks. Connectors are mounted and tested in our factory.

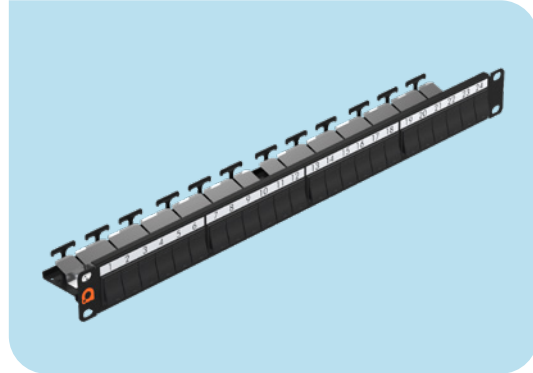
LANmark Pre-Term Bundles are designed to be laid and are not suitable for pulling. All modular structural hardware items designed for the Snap-In range can be used in all positions of a 4 connector twisted pair cabling channel (PP, CC, CP, TO).

- Numbering on each leg
- Labels on first leg of each assembly (customisable)
- Factory tests in electronic format on request
- Field testing required after installation

Modular Patch Panels

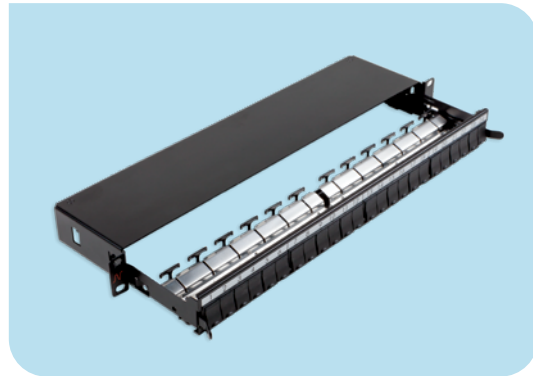
Patch Panel 24 Snap-In

- 1U flat design
- Compatible with all LANmark Snap-In connectors, screened and unscreened
- 1 to 24 numbered ports with removable shutters
- Shutters replaceable with coloured versions for distinction between services
- Clip-on rear cable management avoiding the use of cable ties, gaining installation time
- Auto-Connect earthing system
- Available in black and in white



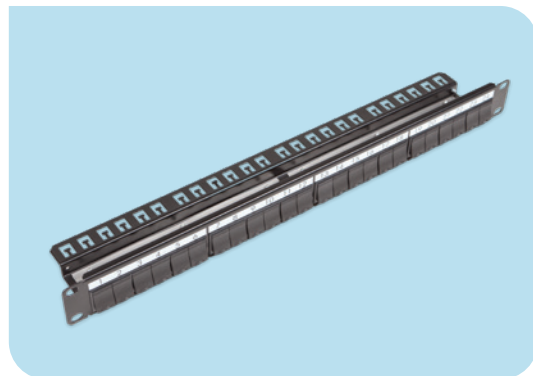
Patch Panel 24 Snap-In Sliding

- 1U flat design with sliding pull-out front
- Compatible with all LANmark Snap-In connectors, screened and unscreened
- 1 to 24 numbered ports with removable shutters
- Shutters replaceable with coloured versions for distinction between services
- Clip-on rear cable management avoiding the use of cable ties, gaining installation time
- Auto-Connect earthing system
- Available in black and in white



Patch Panel 24 Snap-In Black

- 1U flat design
- Compatible with all LANmark Snap-In connectors, screened and unscreened
- 1 to 24 numbered ports with removable shutters
- Shutters replaceable with coloured versions for distinction between services
- Auto-Connect earthing system
- Rear cable management with cable tie features



Reference

N521.661BK
N521.661
N521.663BK
N521.663
N521.664BK

Description

LANmark Patch Panel 24 Snap-In Fixed Black
 LANmark Patch Panel 24 Snap-In Fixed White
 LANmark Patch Panel 24 Snap-In Sliding Black
 LANmark Patch Panel 24 Snap-In Sliding White
 LANmark Patch Panel 24 Snap-In Black

High density panels

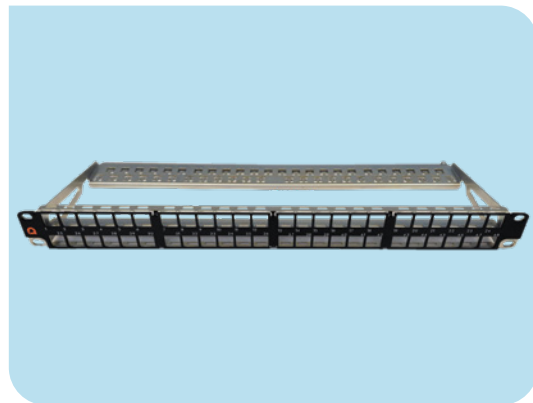
Angled Patch Panel 24 Snap-In Black

- 1U V-shaped design
- Supports high density patching - ideal for Data Centres
- Eliminates the need for additional cable management, optimising rack space usage
- Compatible with all LANmark Snap-In connectors, screened and unscreened
- Auto-Connect earthing system
- Rear cable management with cable tie features



Patch Panel 48 ULTIM 1U Black

- High density panel dedicated for LANmark-6A ULTIM connectors
- 48 ports in 1U
- Ideal for Data Centre cross-connects and server racks (also in combination with LANmark Pre-Terms)
- Robust steel construction with black painted removable front
- Connectors in latch-up/latch-down position for ease of patching
- Rear cable management with cable tie features
- Panel supplied without connectors



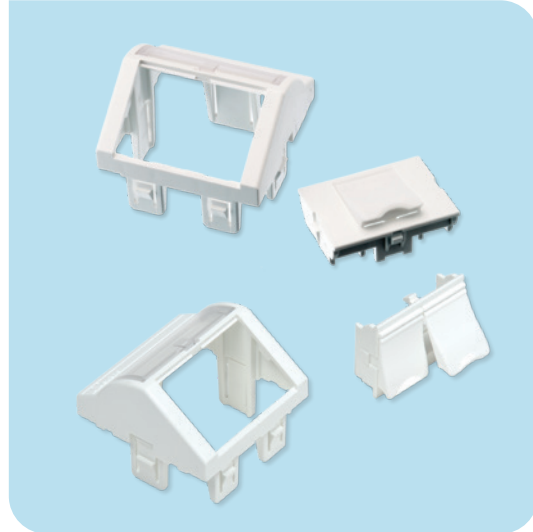
Reference
N521.671
N521.960BK

Description
 LANmark Angled Patch Panel 24 Snap-In Black
 LANmark Patch Panel 48 ULTIM 1U Black

Modular outlets

EU Style Angled 45 x 45 Module 2 or 1 Snap-In White

- Kit of 45 x 45mm back module with Snap-In front module for either 1 or 2 connectors
- Designed to accommodate LANmark Snap-In connectors
- Also suitable for LANmark fibre Snap-In adapters
- Angled design provides depth benefit and ensures that cable bend radius is maintained
- Colour white (RAL 9010)
- White removable shutters, replaceable with optional coloured version (7 colours available), allowing differentiation between various services
- Labelling window
- Can be vertically or horizontally mounted
- Fits into LANmark EU style frame and surface mount box
- Compatible with wide range of international frames, surface mount boxes and trunking



EU Style Flat 45 x 45 Module 2 Snap-In White

- Designed to accommodate LANmark Snap-In connectors
- Colour white (RAL 9010)
- White removable shutters, replaceable with optional coloured version (7 colours available), allowing differentiation between various services
- Labelling window
- Fits into LANmark EU style frame and surface mount box
- Compatible with wide range of international frames, surface mount boxes and trunking



EU Style 45 x 45 Frame White

- Accepts all LANmark 45 x 45 modules
- 80 x 80 mm outer dimensions
- Integrated support plate with multiple mounting holes
- Easy to install
- Colour white (RAL 9010)

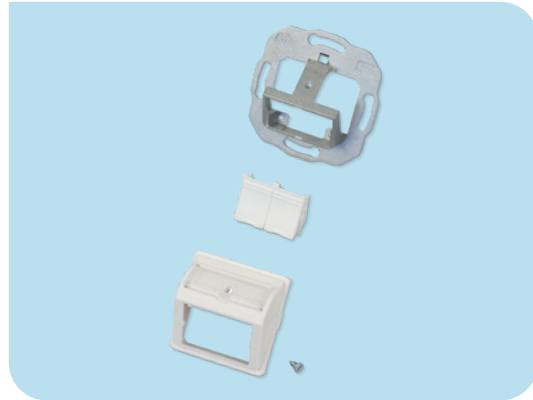


Reference
N423.520
N423.540N
N423.550
N200.050

Description
 LANmark EU style angled 45 x 45 module 1 Snap-In white
 LANmark angled 45 x 45 module 2 Snap-In white
 LANmark EU style 45 x 45 module 2 Snap-In flat white
 LANmark EU style 45 x 45 frame white

German Style Angled 50 x 50 Module 2 or 1 Snap-In White

- 50 x 50mm plastic front module and Snap-In insert for either 1 or 2 connectors
- Robust metal mounting frame
- Angled design provides depth benefit and ensures that cable bend radius is maintained
- Accommodates all LANmark Snap-In connectors
- Also suitable for LANmark fibre Snap-In adapters
- Colour white (RAL 9010)
- Supplied with screw



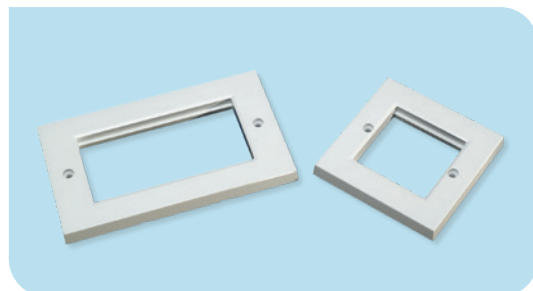
UK Style Snap-In Modules

- 25 x 50 mm and 25 x 38 mm (LJ6C) dimensions
- Available in flat and angled versions
- Designed to accommodate 1 LANmark Snap-In connector
- Also suitable for LANmark fibre Snap-In adapters
- Angled design provides depth benefit and ensures that cable bend radius is maintained
- Glossy white finish (RAL 9003)
- White removable shutters, replaceable with optional coloured version (7 colours available), allowing differentiation between various services
- Labelling area
- Fit into wide range of UK style frames and trunking, surface mount boxes and floor tanks



UK Style 50 x 50 and 100 x 50 Frames Flat White

- Accept LANmark 25 x 50 mm and 50 x 50 mm modules
- 86 x 86 mm and 146 x 86 mm outer dimensions
- Glossy white finish
- Supplied with screws



Reference

N423.702N
N423.701N
N424.310
N424.315
N424.320
N424.325
N424.013
N424.023

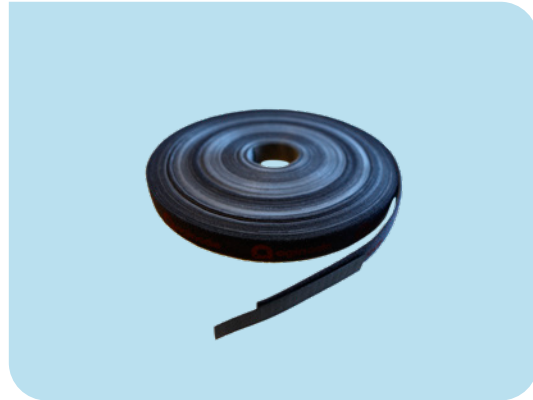
Description

LANmark German Style Angled 50 x 50 Module 2 Snap-In White
 LANmark German Style Angled 50 x 50 Module 1 Snap-In White
 LANmark UK Style 25 x 50 Module 1 Snap-In White
 LANmark UK Style Angled 25 x 50 Module 1 Snap-In White
 LANmark UK Style LJ6C Module 1 Snap-In White
 LANmark UK Style Angled LJ6C Module 1 Snap-In White
 UK Style 50 x 50 Frame Flat White
 UK Style 100 x 50 Frame Flat White

Tools & accessories

Hook & Loop Cable Strap 25m Roll

- High quality self-gripping cable tie
- Black strap with orange Aginode logo
- Reusable multiple times
- Recommended to bundle and tie both copper and optical fibre data cables
- Reduces strain on cables compared to traditional cable fasteners
- 20mm width
- 25m roll



Comfort Tool

- Facilitates smooth termination of LANmark-6 Unscreened Evo and LANmark-7A GG45 connectors
- Allows re-opening of LANmark-6 Unscreened connector allowing retermination



Easy Termination Tool

- Prepares S/FTP cable for connection to LANmark-7A GG45 connector
- Makes LANmark-7 GG45 installation fast, easy and consistent
- Set of spare blades for Easy Termination tool available



Reference
N100.100
N420.567
N422.117
N422.118

Description
 Hook & Loop Cable Strap 25m Roll Black
 Comfort tool for LANmark-6 UTP and LANmark-7A GG45 connectors
 LANmark-7A Easy Termination tool
 Set of spare knives for Easy Termination tool

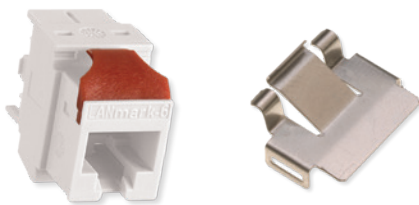
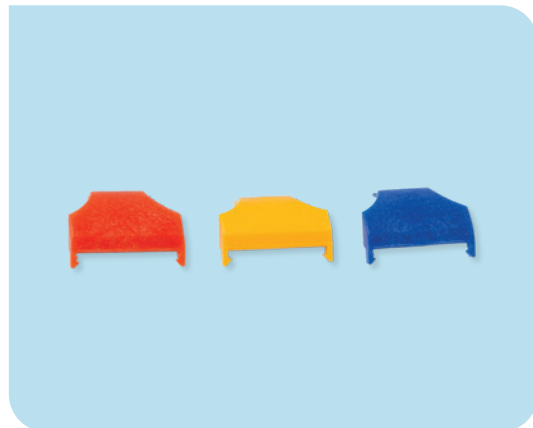
LANmark Coloured Shutters and Latch Protectors

- Available in 7 colours: white, , blue, red, dark grey, green, yellow, orange
- Coloured shutters can be used to replace standard black or white versions on LANmark Snap-In patch panels, outlet modules and zone distribution boxes
- Coloured latch protectors can be used to replace pre-fitted standard black versions on LANmark patch cords
- Suitable for differentiation between various services or applications by colour coding, throughout the entire channel
- Shutters: packed in bags of 100 / Latch protectors: packed in bags of 50



Keystone Clips

- Adapter allowing LANmark Snap-In connectors to fit the Keystone format
- Metal clip for GG45 connector
- Plastic clips for all LANmark connectors including GG45 connector
- 3 different plastic clips available for different keystone aperture dimensions (height and wall thickness)



Reference

N421.701XXX

Description

LANmark Shutter 100x
 ("XXX" denoting colour: BLA = Black, BLU = Blue, DGR = Dark Grey, GRE = Green, ORA = Orange, RED = Red, YEL = Yellow, WHI = White)

N110.LPX

LANmark Latch Protector 50x
 ("X" denoting colour: K = Black, B = Blue, D = Dark Grey, G = Green, O = Orange, R = Red, Y = Yellow, W = White)

N429.625

LANmark Keystone Clip Evo (Wall Thickness 1.5-1.75) Red 24x

N429.626

LANmark Keystone Clip Evo (Wall Thickness 2.0-2.25) Blue 24x

N429.627

LANmark Keystone Clip Evo (Wall Thickness 2.0-2.25 Height 19.7) Yellow 24x

N429.620

LANmark Keystone Clip GG45 24x

Zone Distribution Boxes

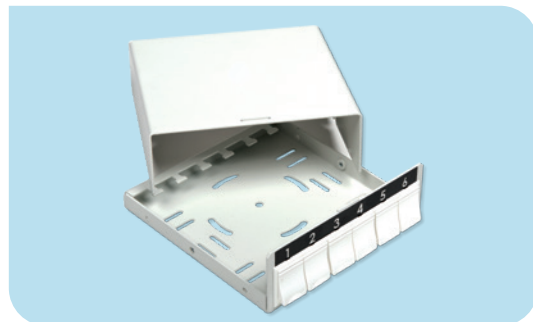
ZD Box 12 Snap-In White

- Robust steel construction
- For use as consolidation point
- Compatible with all LANmark Snap-In connectors
- 12 numbered Snap-In ports with shutters
- Cable entry from the back
- Cable fixing features
- Easy to install



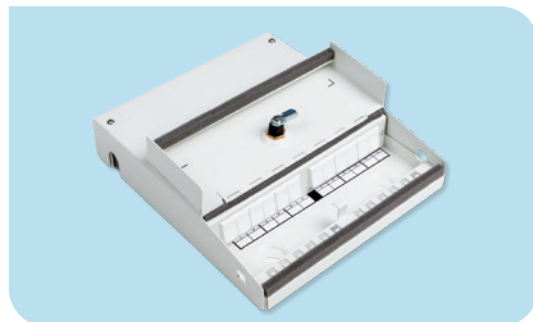
ZD Box 6 Snap-In White

- For use as consolidation point
- Compatible with all LANmark Snap-In connectors
- 6 numbered Snap-In ports with shutters
- Cable entry from the back
- Cable fixing features
- Multiple mounting facilities



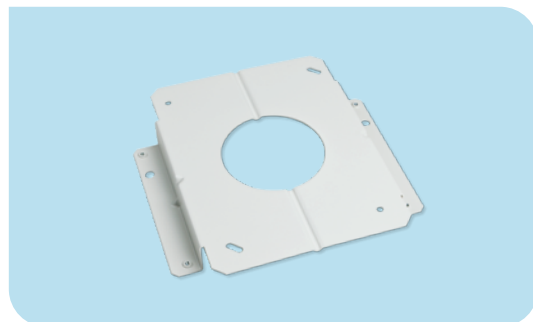
Ruggedised Lockable ZD Box White

- For use as consolidation point
- Compatible with all LANmark Snap-In connectors
- 12 numbered Snap-In ports with shutters
- Easy to install
- Ruggedised design for industrial and secure environments
- Lockable with key (supplied)
- Protected against dust entry
- Designed to support installations with extractable fibre bundles



Ruggedised Lockable ZD Box Foot White

- Foot for LANmark Ruggedised ZD Box
- Raises ZD box to 50mm
- Rugged steel construction



Reference

N521.600

N521.606

N521.612

N521.6121

Description

LANmark ZD box 12 Snap-In White

LANmark ZD box 6 Snap-In White

LANmark Ruggedised Lockable ZD Box White

LANmark Ruggedised Lockable ZD Box Foot White

Secure Lock RJ45 cords

Secure Lock copper cords are designed to meet the needs of applications such as:

- PoE connector protection (damage caused by de-mating under load)
- Theft prevention (hotels/schools/libraries)
- Critical circuit protection
- Patch cord availability (meeting rooms)
- Redundant copper links
- Connection of IP security cameras

LANmark Secure Lock cords are equipped with a locking feature at either one or both plugs. Once the cord is plugged in and locked in place, the plug can no longer be unlatched from the RJ45 port. The cord can only be disconnected when the Secure Lock Key is used to unlock the latch.

The Category 6A Secure Lock cords have an orange LSZH jacket and are available in 1, 2, 3 and 5m lengths, with either 1 or 2 lockable plugs.



Reference

N1LA.P1HxxO77

N1LA.P1HxxO70

Description

LANmark-6A Secure Lock Patch Cord Category 6A S/FTP LSZH Secure Boots

LANmark-6A Secure Lock Patch Cord Category 6A S/FTP LSZH Single Secure Boot ("xxx" denoting length: 010 = 1m, 020 = 2m, 030 = 3m, 050 = 5m)

LANmark™

Fibre solutions



**More
data**



**Less
space**

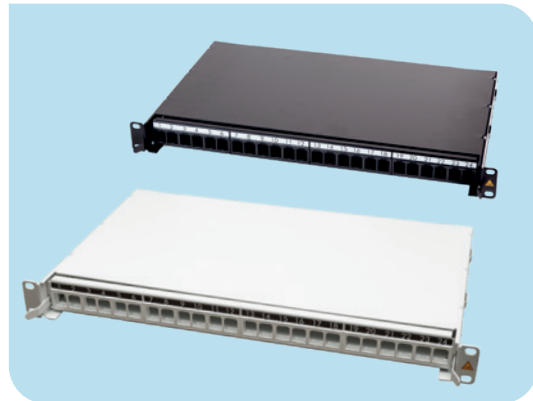


LANmark-OF

Snap-In Panels

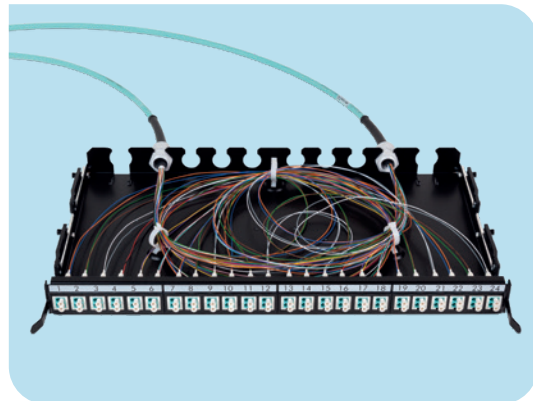
Snap-In Panel

- Fibre patch panels with Snap-In adaptors for fast installation, flexibility and scalability
- 19-inch empty rack mountable patch panel
- Density: up to 12 DSC or 24 DLC
- Mixture of adaptors and fibre type inside same panel
- Sliding tray with 3 different locking positions
- Large splice cassettes with lifting functionality for improved ease of installation and inspection
- Optimised for installation of Pre-Term with a cable gland and fibre management features
- Strain relief: optional cable glands or tie wraps
- Labelling facility above Snap-In adaptors



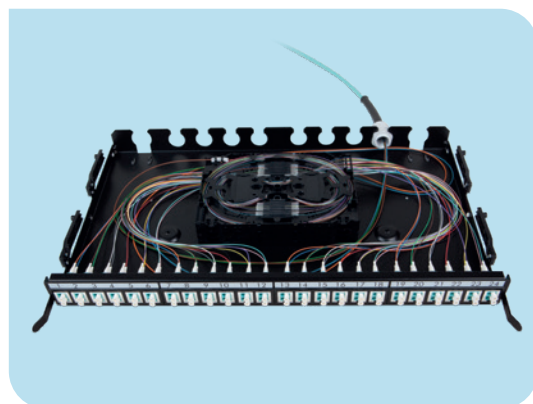
Snap-In Panel for Installation of Pre-Terms

- Can be used for installation of LANmark-OF preterm
- Management rings included with patch panel
- Cable glands of the Pre-Terms allow a fast and solid fixing



Snap-In Panel Optimised for Splicing

- Large splice cassettes for improved fibre
- Up to 48 fibres with 4 splice cassettes for heat shrink protectors (N890.090)
- Up to 48 fibres with 4 splice cassettes for Aluminum Protectors (N890.091)
- Only one cover needed per patch panel (N890.092)
- 2 different fibre routings for fibres from pigtails and cables
- Cassettes can be lifted and tilted for easier installation and maintenance



Reference
N439.4SNW
N439.4SNB

Description
LANmark-OF Patch Panel Snap-In Sliding White
LANmark-OF Patch Panel Snap-In Sliding Black

Zone Distribution Boxes

LANmark-OF Zone Distribution Box 12x Snap-In White

- Zone Distribution Box for optical fibre
- Modular design allowing 6x duplex SC or 12x duplex LC Snap-In adaptors
- Suitable for direct termination or splicing
- Printed numbering system on the cover
- Designed for the installation of zone wiring, fibre to the office and to the desk



LANmark Ruggedised Lockable Zone Distribution Box 12x Snap-In White

- For use as consolidation point
- Compatible with all LANmark Snap-In connectors
- 12 numbered Snap-In ports with shutters
- Ruggedised design for industrial and secure environments
- Lockable with key (supplied)
- Designed to support installations with extractable fibre bundles



LANmark-OF Demarcation Box

- Optimised for extractable cable design
- Left or right mounting option
- 6 duplex LC adaptors
- Secure accommodation of splice cassettes (not included)
- Lockable patching area with management ring
- Port identification
- Robust steel construction



Reference

N521.630
N521.612
N521.621
N521.622

Description

LANmark-OF ZD box 12 Snap-In White
 LANmark Ruggedised Lockable ZD Box 12 Snap-In White
 LANmark-OF Demarcation Box 12 Core Multimode White
 LANmark-OF Demarcation Box 12 Core Singlemode White

Outlet

LANmark-OF 45 x 45 Splicing Outlet 2 Snap-In

- Can accommodate 2x duplex LC or 1x duplex SC Snap-In Adaptors
- Fits surface mount boxes, cover plates and ducts
- Optimised for anaerobic termination of Tight Buffer cables and patch cord cables
- Optimised for splicing with heat shrink or Aluminum Protectors
- Features strain relief for cables

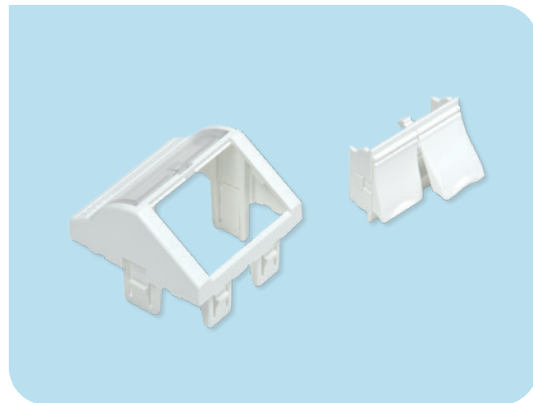


Reference
N420.035

Description
LANmark-OF 45x45 Splicing Outlet 2 Snap-In White

LANmark Angled Module

- Can accommodate 2x duplex LC or 1x duplex SC Snap-In Adaptors
- The Snap-In Adaptors easily clip in the shuttered front module without the need for any tools
- The minimum bend radius of the cables is maintained thanks to the angled position of the adaptors
- The inclined faceplate also protects the patch cords and prevents dust entry when the shutters are left open



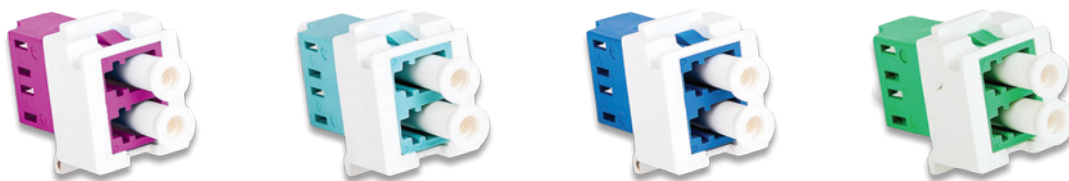
Reference
N423.540N

Description
LANmark EU Style Angled 45x45 Module 2 Snap-In White

Snap-In Adaptors

LANmark-OF Snap-In LC and SC Adaptors

- Designed for snapping into
 - LANmark-OF Snap-In Panel: N439.4SNW and N439.4SNB
 - LANmark-OF Zone distribution boxes: N521.630, N521.612
 - Modules: N420.035, N423.540N, N423.520
- Installation time is saved since the Snap-In concept replaces the time-consuming screwing of traditional adaptors.
- Available in duplex LC and duplex SC, multimode, singlemode and singlemode APC



LANmark-OF Duplex LC Snap-In Adaptor

Reference

N205.616

N205.617

N205.627

N206.628

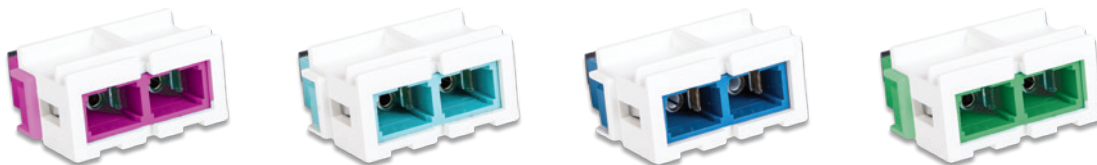
Description

LANmark-OF Duplex LC Snap-in adaptor Multimode Violet

LANmark-OF Duplex LC Snap-In Adaptor Multimode aqua

LANmark-OF Duplex LC Snap-In Adaptor Singlemode

LANmark-OF Duplex LC Snap-In Adaptor Singlemode APC



LANmark-OF Duplex SC Snap-In Adaptor

Reference

N205.619

N205.619V

N205.624

N205.625

Description

LANmark-OF Duplex SC Snap-In Adaptor Multimode aqua

LANmark-OF Duplex Snap-In Adaptor Multimode violet

LANmark-OF Duplex SC Snap-In Adaptor Singlemode

LANmark-OF Duplex SC Snap-In Adaptor Singlemode APC

LANmark-OF Plug&Play

- High density patch panel: up to 48 SC or 96 LC depending on module type
- Up to 4 Plug&Play modules or 4 Plug&Play adaptor plates
- Sliding and tilting patch panel for ease of installation, upgrade and maintenance
- Labelling front for port identification and patch cord management



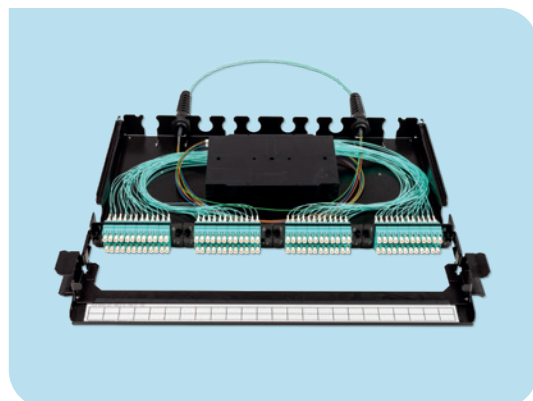
Installation with Plug&Play Adaptor Plates and LC/LC Pre-Terms

- Compatible with LANmark-OF Universal LC/LC Pre-Term
- Compatible with LANmark-OF ENSPACE LC/LC Pre-Term
- Fibre organisers included for fibre management inside patch panel in 4 different loops



Optimised for splicing with Plug&Play Adaptor Plates and Pigtails

- Up to 4 splice cassettes and 1 cover
- Large splice cassettes for improved fibre management inside cassettes
- Cassettes can be lifted and tilted
- Up to 48 fibres with heat shrink protectors and Tight Buffer pigtails
- Up to 96 fibres with mechanical/aluminum protection and Maxistrip pigtails



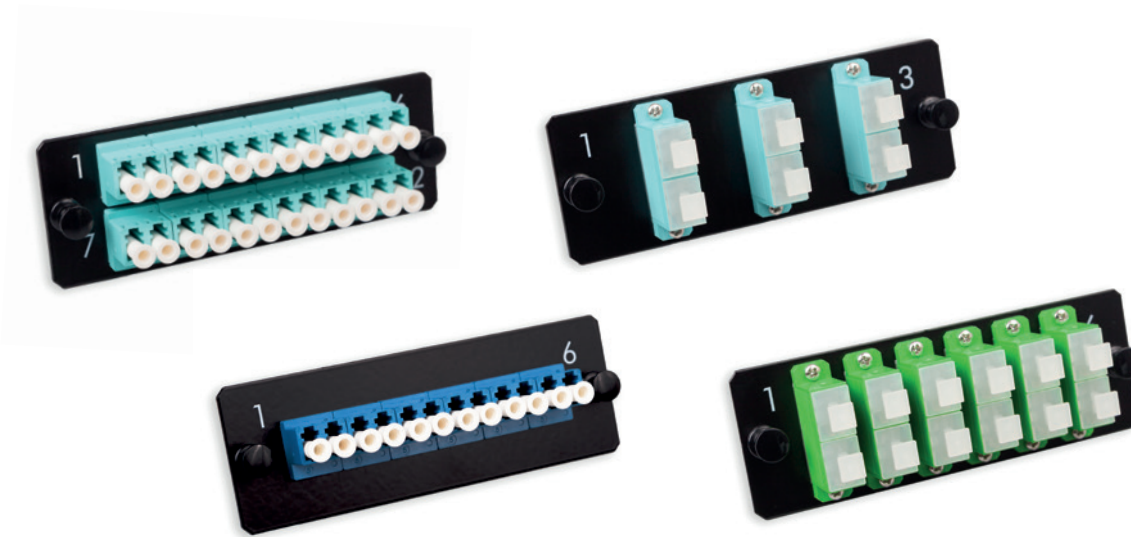
Installation with Plug&Play modules and MPO/MPO Pre-Term

- Plug&Play modules can be easily mounted from the front of the panel
- Compatible with ENSPACE MPO/MPO Pre-Terms

Reference	Description
N439.3MPP	LANmark-OF Plug&Play Patch Panel Integrated Cord Guide Sliding Black

LANmark-OF Plug&Play SC/LC Adaptor Plates

- Adaptor plates for 3DSC, 6DSC, 6DLC or 12DLC
- Available in multimode, singlemode and singlemode APC
- Module can be easily mounted into Aginode's Plug&Play patch panel
- High density: 4 plates fit into 1U
- Can be used together with SC/LC Pre-Term or cables terminated with splicing



Reference	Description	Adaptor type	Fibre category	Density in 1U
N205.ALC12MMA	LANmark-OF Adaptor Plate 12 LC Multimode Aqua	LC	Multimode	48
N205.ALC24MMA	LANmark-OF Adaptor Plate 24 LC Multimode Aqua	LC	Multimode	96
N205.ALC12MMV	LANmark-OF Adaptor Plate 12 LC Multimode Violet			
N205.ALC24MMV	LANmark-OF Adaptor Plate 24 LC Multimode Violet			
N205.ALC12SMB	LANmark-OF Adaptor Plate 12 LC Singlemode Blue	LC	Singlemode	48
N205.ALC24SMB	LANmark-OF Adaptor Plate 24 LC Singlemode Blue	LC	Singlemode	96
N205.ALC12SAG	LANmark-OF Adaptor Plate 12 LC Singlemode APC Green	LC	SM/APC	48
N205.ALC24SAG	LANmark-OF Adaptor Plate 24 LC Singlemode APC Green	LC	SM/APC	96
N205.ASC06MMA	LANmark-OF Adaptor Plate 6 SC Multimode Aqua	SC	Multimode	24
N205.ASC06MMV	LANmark-OF Adaptor Plate 6 SC Multimode Violet			
N205.ASC12MMV	LANmark-OF Adaptor Plate 12 SC Multimode Violet			
N205.ASC12MMA	LANmark-OF Adaptor Plate 12 SC Multimode Aqua	SC	Multimode	48
N205.ASC06SMB	LANmark-OF Adaptor Plate 6 SC Singlemode Blue	SC	Singlemode	24
N205.ASC12SMB	LANmark-OF Adaptor Plate 12 SC Singlemode Blue	SC	Singlemode	48
N205.ASC06SAG	LANmark-OF Adaptor Plate 6 SC Singlemode APC Green	SC	SM/APC	24
N205.ASC12SAG	LANmark-OF Adaptor Plate 12 SC Singlemode APC Green	SC	SM/APC	48

LANmark-OF Plug&Play Female MPO Modules

- Plug&Play modules with 12SC or 12LC
- Up to 4 modules fit into 1U
- High density: up to 48SC or 48LC within 1U
- Available with low loss LANmark-OF Plug&Play connectivity for multimode and singlemode
- Module can be easily mounted into Aginode's Plug&Play patch panel from the front
- Straight or crossed wiring
- Plug&Play modules are pre-installed and 100 % factory tested
- Female MPO-connector inside module
- Compatible with LANmark-OF ENSPACE male MPO-MPO Pre-Term



Reference	Description	Fibre Category	Density in 1U	Connector type	Wiring
N441.5L12LC0FS	LANmark-OF Plug&Play Low Loss Module Female Straight 12 LC SM Blue	SM OS2	48	LC	Straight
N441.5L12LCVFS	LANmark-OF Plug&Play Low Loss Module Female Straight Violet	OM4	12	LC	
N441.5L12SC0FS	LANmark-OF Plug&Play Low Loss Module Female Straight 12 SC SM Blue	SM OS2	48	SC	Straight
N441.5L12SC4FS	LANmark-OF Plug&Play Low Loss Module Female Straight 12 SC OM4 Aqua	OM4/OM5	48	SC	Straight
N441.5L12LC0FC	LANmark-OF Plug&Play Low Loss Module Female Crossed 12 LC SM Blue	SM OS2	48	LC	Crossed
N441.5L12LCVFC	LANmark-OF Plug&Play Low Loss Module Female Crossed 12 LC OM4 Violet	OM4/OM5	48	LC	Crossed
N441.5L12SC0FC	LANmark-OF Plug&Play Low Loss Module Female Crossed 12 SC SM Blue	SM OS2	48	SC	Crossed

LANmark-OF Plug&Play MPO Adaptor Plates

- Adaptor plates for 6 MPO
- Key up/key down or key up/key up
- Available in multimode and singlemode APC
- Module can be easily mounted into Aginode's Plug&Play patch panel
- Up 4 plates fit into 1U
- Compatible with LANmark-OF ENSPACE MPO/MPO Pre-term



Reference	Description	Fibre category	Density in 1U
N205.AMTP6MMUD	LANmark-OF Adaptor Plate 6 MPO Multimode Key Up Key Down Aqua	Multimode	24
N205.AMTP6SMUD	LANmark-OF Adaptor Plate 6 MPO Singlemode Key Up Key Down Green	SM/APC	24
N205.AMTP6MMUU	LANmark-OF Adaptor Plate 6 MPO Multimode Key Up Key Up Grey	Multimode	24

Splicing Accessories for LANmark-OF Panels

Features:

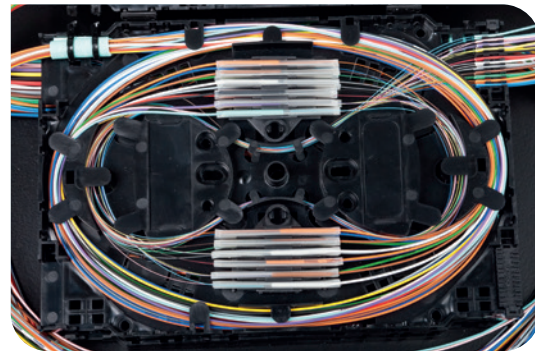
- The splice cassettes can be lifted and tilted for inspection and maintenance with the hinges at the rear of the cassettes.
- Improvement fibre management with 2 rings of routing for the fibres: an inner ring for the fibres of the pigtails and an outer ring for the fibres of the cable.

Compatible for installation in following patch panels:

- LANmark-OF Snap-In patch panels: N439.4SNW and N439.4SNB
- LANmark-OF Plug&Play panel: N439.3MPP

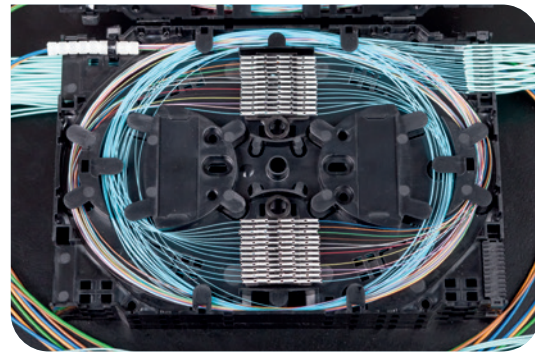
LANmark-OF Splice Cassette 12 Heat Shrink Protection

- Splice cassette for management of splices with heat shrink protectors
- Provides support for 2*12 heat shrink splice protectors
- Designed for use with both loose tube and tight buffer cables, i.e. 250 and 900 µm coated fibres
- Designed for use with both Maxistrip and tight buffer pigtails



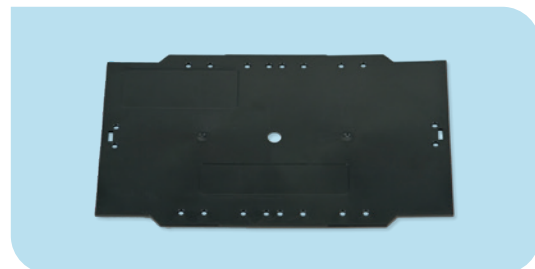
LANmark-OF Splice Cassette 24 Aluminum Protection

- Splice Cassette for management of splices with Aluminum Protectors
- Provides support for 2*12 splices with Aluminum Protectors
- Designed for use with loose tube cables (250 µm coated fibres)
- Designed for use with Maxistrip pigtails



LANmark-OF Cover Splice Cassette

- LANmark-OF splice cassette cover compatible with N890.090 and N890.091
- When the splice cassettes are stacked only the top splice cassette requires a cover



Reference
N890.090
N890.091
N890.092

Description
LANmark-OF Splice Cassette Heat Shrink Protectors
LANmark-OF Splice Cassette Aluminum Protectors
LANmark-OF Splice Cassette Cover



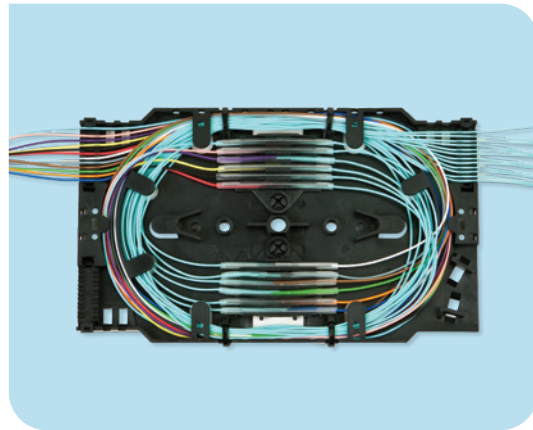
Splicing accessories for LANmark-OF ZD-boxes

Compatible for installation in following ZD-boxes:

- N521.630: LANmark-OF ZD box 12 Snap-In White
- N521.612: LANmark Ruggedised Lockable ZD Box 12 Snap-In White
- N521.621: LANmark-OF Demarcation box 12 core Multimode White
- N521.622: LANmark-OF Demarcation box 12 core Singlemode White

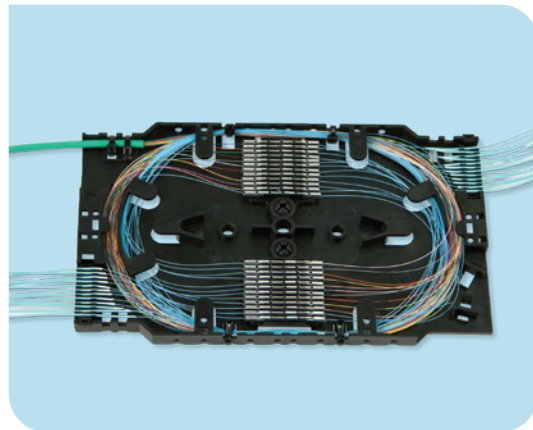
LANmark-OF Splice Cassette 12 Heat Shrink Protection Small

- Splice cassette for management of splices with heat shrink protectors
- Provides support for 2*6 heat shrink splice protectors
- Designed for use with both loose tube and tight buffer cables, i.e. 250 and 900 µm coated fibres
- Designed for use with both Maxistrip and tight buffer pigtails



LANmark-OF Splice Cassette 24 Aluminum Protection Small

- Splice Cassette for management of splices with Aluminum Protectors
- Provides support for 2*12 splices with Aluminum Protectors
- Designed for use with loose tube cables (250 µm coated fibres)
- Designed for use with Maxistrip pigtails
- LANmark-OF Cover Splice Cassette: N890.092
- LANmark-OF splice cassette cover compatible with N890.095 and N890.096
- When the splice cassettes are stacked only the top splice cassette requires a cover



Reference

N890.095

N890.096

N890.097

Description

LANmark-OF Splice Cassette Heat Shrink Protectors Small

LANmark-OF Splice Cassette Aluminum Protectors Small

LANmark-OF Splice Cassette Cover Small

LANmark-OF Splicing Accessories

LANmark-OF Fusion Splice Heat Shrink Protectors 45mm 100x

- 100 pieces per bag
- Length: 45mm
- Compatible with tight buffer or loose tube cables, i.e. 250 and 900 µm coated fibres
- Compatible with tight buffer and Maxistrip pigtails
- Designed for Aginode's splice cassettes for 12 heat shrink fusion splice protectors (N890.095 and N890.090)



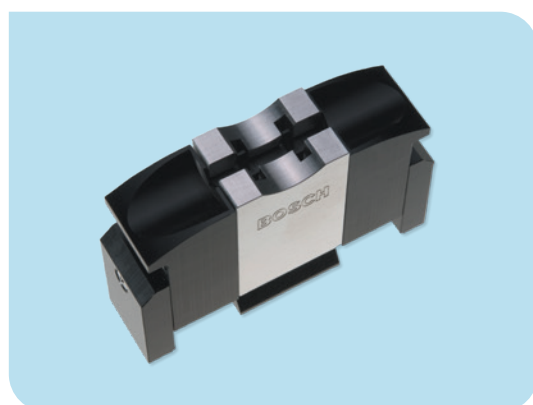
LANmark-OF Fusion Splice Aluminum Protectors 150x

- 150 pieces per bag
- Length: 30 mm
- Compatible with loose tube cables (250 µm coated fibres)
- Compatible with Maxistrip pigtails
- Designed for Aginode's splice cassette for 24 Aluminum fusion splice protectors (N890.096 and N890.091)



LANmark-OF Tool for Fusion Splice Aluminum Protection

- A crimp tool for easy installation of the LANmark-OF Aluminum fusion splice protectors (N890.003)



Pigtails

LANmark-OF Tight Buffer Pigtails

N121.xTyz

- Available in SC and LC
- Fibre type: SM, SM/APC, OM3 and OM4
- Tight Buffer pigtailed can be stripped over 1-2 cm in one action
- Compatible with heat shrink protectors (N890.021)
- Standard length of 1m



N121.5TLA



N121.5TCA

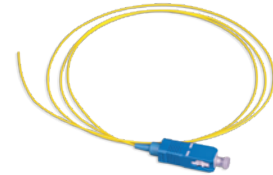
LANmark-OF Maxistrip Pigtails

N121.xMyz

- Available in SC and LC
- Fibre type: SM, SM/APC, OM3 and OM4
- Tight Buffer pigtailed can be stripped over 1m in one action
- Compatible with heat shrink (N890.021) and Aluminum Protectors (N890.003)
- Standard length of 1m



N121.4TLY



N121.4TCY

LANmark-OF Pigtails Maxistrip or Tight Buffer Set of 12 Colours

N121.xMyS or N121.xTyS

- Colours: Blue, Orange, Green, Brown, Grey, White, Red, Black, Yellow, Violet, Pink, Aqua
- Same colours as fibres inside cables
- Easier identification of channels
- Packed on one card in one bubble wrap: less waste and less bags to open
- Available in Maxistrip and Tight Buffer versions
- Standard length of 1m



N121.4TPY



N121.4TDY

x = Fibre type

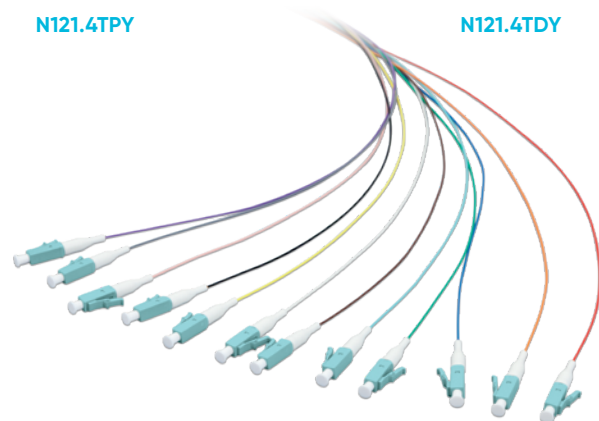
- 4: OS2
- 5: OM3
- 7: OM4
- 9: OM5

y = Connector type

- C: SC
- D: SC/APC
- L: LC
- P: LC/APC

z = Colours

- A: Aqua
- Y: Yellow
- L: Lime Green
- V: Violet



N121.5TLS

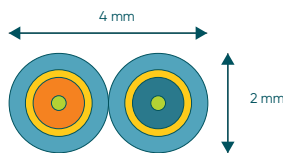
The pigtailed pictures are similar in Maxistrip version

Patch cords

- Aqua for OM3, Violet for OM4 and Yellow for singlemode patch cords, Lime Green for OM5 patch cords
- Bend radius reduced to 10 mm with GIGAliteFlex bend insensitive fibre
- Designed to withstand tight bends and challenging cable routes
- Low-smoke and zero-halogen (LSZH)
- Flame retardant, IEC 60332-1
- "Cross-Over" wiring design in alignment with IEC 11801 and EN50174-1:2009
- Low-loss connectivity enables system design flexibility

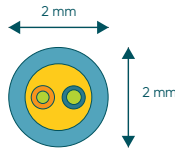
LANmark-OF Slimflex Patch Cords

- Duplex patch cord
- Available with a SC and LC connectors
- Hybrid patch cords available



LANmark-OF ENSPACE LC-LC Patch cords

- Uniboot style duplex LC connectors
- Slim 2mm round patch cord cable to reduce required space in dense patching zones
- Improved handling in high-density applications
- Reverse polarity Uniboot connector



Multimode Patch cords



DLC-DLC MM



DSC-DLC MM



DSC-DSC MM

Multimode OM3

N122.5LLAx

N122.5CCAx

N122.5CLAx

LANmark-OF Patch Cord Duplex LC Duplex LC OM3 LSZH Xm Aqua
 LANmark-OF Patch Cord Duplex SC Duplex SC OM3 LSZH Xm Aqua
 LANmark-OF Patch Cord Duplex LC Duplex SC OM3 LSZH Xm Aqua

Multimode OM4

N122.7UUVx

N122.7CCVx

N122.7CLVx

LANmark-OF ENSPACE Patch Cord DLC-DLC OM4 LSZH Xm Violet
 LANmark-OF Patch Cord Duplex SC Duplex SC OM4 LSZH Xm Violet
 LANmark-OF Patch Cord Duplex LC Duplex SC OM4 LSZH Xm Violet

Multimode OM5

N122.9UULx

LANmark-OF ENSPACE Patch Cord DLC-DLC OM5 LSZH Xm Lime Green

Singlemode Patch cords



DLC-DLC SM



DSC-DSC SM



DSC/APC DSC/APC

Reference

N122.4UUYx

N122.4LLYx

N122.4PPYx

N122.4CCYx

N122.4DDYx

N122.4CLYx

Description

LANmark-OF ENSPACE Patch Cord DLC-DLC Singlemode LSZH Xm Yellow

LANmark-OF Patch Cord Duplex LC Duplex LC SM LSZH Xm Yellow

LANmark-OF Patch Cord Duplex LC/APC Duplex LC/APC SM LSZH Xm Yellow

LANmark-OF Patch Cord Duplex SC Duplex SC SM LSZH Xm Yellow

LANmark-OF Patch Cord Duplex SC/APC Duplex SC/APC SM LSZH Xm Yellow

LANmark-OF Patch Cord Duplex LC Duplex SC SM LSZH Xm Yellow

Cables

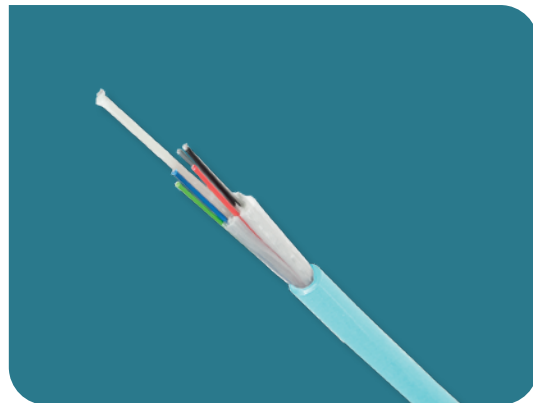
TBUN LANmark-OF Tight Buffer Universal LSZH

- Tight Buffer Universal - optical fibre cable
- Indoor cable and outdoor installation in a duct
- Fully waterproof and rodent retardant
- Designed for direct termination and splicing
- Low Smoke Zero Halogen (LSZH)
- 900µm overcoated fibres
- Sheath Colour: Yellow: Singlemode, Aqua: Multimode OM3, Violet: Multimode OM4
- Up to 24 Fibres - All fibre grades
- Reaction to fire: CCa Up to 12 fibres



LTUN LANmark-OF Loose Tube Universal LSZH

- Loose Tube Universal optical fibre cable
- Indoor cable and outdoor installation in a duct
- Fully waterproof
- Designed for splicing with pigtails
- Low Smoke Zero Halogen
- Sheath colour: Yellow for SM, Aqua for OM3, Violet for OM4
- 6 to 144 fibres available in all fibre grades
- Reaction to fire - CPR level: available in B2ca, Cca and Dca



TBUN

Reference

N164.TBUNxx-YC
N164.TBUNxx-AC
N164.TBUNxx-VC

Description

LANmark-OF Tight Buffer Universal xx X Singlemode 9/125 OS2 LSZH Cca s1 d1 a1 Yellow
LANmark-OF Tight Buffer Universal xx X Multimode 50/125 OM3 LSZH Cca s1 d1 a1 Aqua
LANmark-OF Tight Buffer Universal xx X Multimode 50/125 OM4 LSZH Cca s1 d1 a1 Violet

LTUN

Reference

N164.LTUNxx-YB
N164.LTUNxx-YC
N164.LTUNxx-YD

Description

LANmark-OF Loose Tube Universal xxFO X Singlemode 9/125 OS2 LSZH B2ca Yellow
LANmark-OF Loose Tube Universal xxFO X Singlemode 9/125 OS2 LSZH Cca Yellow
LANmark-OF Loose Tube Universal xxFO X Singlemode 9/125 OS2 LSZH Dca Yellow

N165.LTUNxx-AB
N165.LTUNxx-AC
N165.LTUNxx-AD

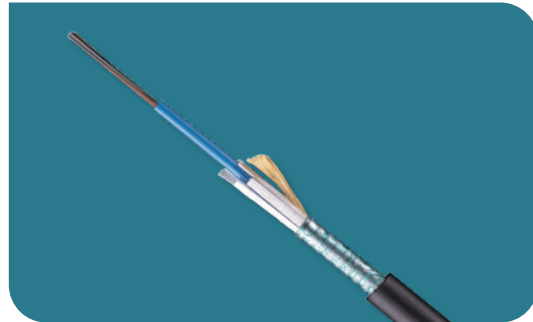
LANmark-OF Loose Tube Universal xxFO X Multimode OM3 50/125 LSZH B2ca Aqua
LANmark-OF Loose Tube Universal xxFO X Multimode OM3 50/125 LSZH Cca Aqua
LANmark-OF Loose Tube Universal xxFO X Multimode OM3 50/125 LSZH Dca Aqua

N167.LTUNxx-VB
N167.LTUNxx-VC
N167.LTUNxx-VD

LANmark-OF Loose Tube Universal xxFO X Multimode OM4 50/125 LSZH B2ca Violet
LANmark-OF Loose Tube Universal xxFO X Multimode OM4 50/125 LSZH Cca Violet
LANmark-OF Loose Tube Universal xxFO X Multimode OM4 50/125 LSZH Dca Violet

UCUN LANmark-OF UC LSZH

- Unitube with Corrugated Steel Armour optical fibre cable
- Indoor/Outdoor installation
- Corrugated steel tape armour
- Central Unitube design, filled with Gel
- Provides full rodent protection
- Low Smoke Zero Halogen (LSZH)
- Black Sheath Colour
- Up to 24 Fibres - All fibre grades
- Reaction to fire: Eca up to 24 fibres



Reference

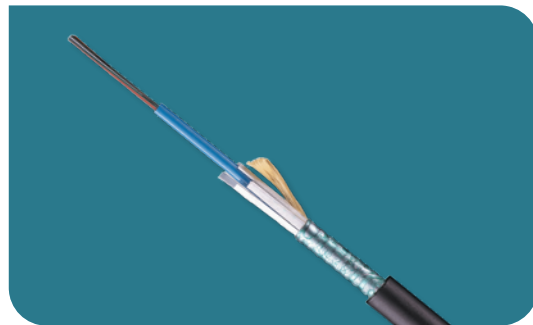
N164.UCUN06B
N164.UCUN12B
N164.UCUN24B

Description

LANmark-OF UC 06x Singlemode 9/125 OS2 LSZH Eca Black
LANmark-OF UC 12x Singlemode 9/125 OS2 LSZH Eca Black
LANmark-OF UC 24x Singlemode 9/125 OS2 LSZH Eca Black

UGUN LANmark-OF UG LSZH

- Unitube with glass yarns protection
- Indoor/Outdoor installation
- Non-metallic construction: FRP rods embedded for excellent tensile strength
- UV resistance and waterproof
- Up to 24 fibres



Reference

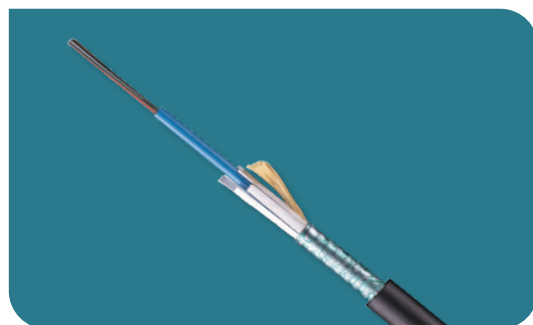
N164.UGUN06-BD
N164.UGUN12-BD
N164.UGUN24-BD

Description

LANmark-OF UGUN 06x Singlemode 9/125 OS2 Black
LANmark-OF UGUN 12x Singlemode 9/125 OS2 Black
LANmark-OF UGUN 24x Singlemode 9/125 OS2 Black

UCPE LANmark-OF UC PE

- Unitube with Corrugated Steel Armour optical fibre cable
- Outdoor installation in ducts or direct burial
- Corrugated steel tape armour
- Central Unitube design, filled with Gel
- Provides full rodent protection
- Black Sheath Colour
- Up to 24 Fibres - All fibre grades



Reference

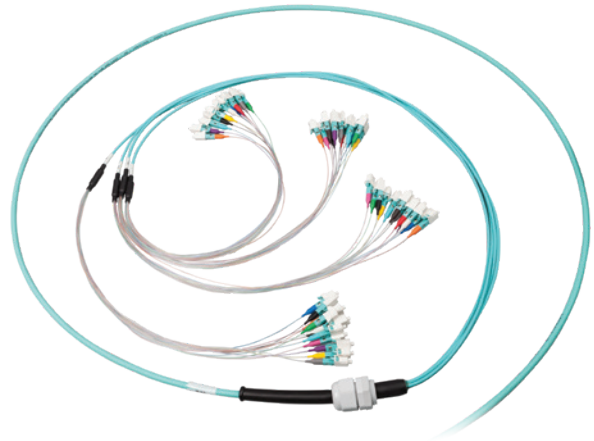
N164.UCPE06B
N164.UCPE12B
N164.UCPE24B

Description

LANmark-OF UC 06x Singlemode 9/125 OS2 PE Black
LANmark-OF UC 12x Singlemode 9/125 OS2 PE Black
LANmark-OF UC 24x Singlemode 9/125 OS2 PE Black

LANmark-OF ENSPACE LC/LC Fibre Assembly

- Dual stage fan-out for installation inside the ENSPACE panel and inside the ENSPACE module
- Pre-Term based on Micro-Bundle technology
- Cable optimised for installation in Data Centre: small diameter, small bend radius and reduced weight
- Superior fire performance: Euroclass Cca s1,d0,a1
- Fibres identified with coloured boots
- Fibre pair flip to maintain transmit-receive polarity implemented in manufacturing
- Low loss insertion loss performance: max 0,3 dB per LC connection
- Fibre count: 12x, 24x, 48x, 96x and 144x
- Fibre type: OM4, Singlemode and OM5 on request



N15a.DnnncExxx-eB: ENSPACE LC/LC Pre-Term

- a:** fibre category **4:** Singlemode OS2
 7: Multimode OM4
 9: Multimode OM5
- D:** ENSPACE LC/LC Pre-Term
- nnn:** fibre count 12, 24, 48, 96 or 144
- c:** connector type **L:** LC-connector
 P: LC/APC connector
- E:** fan-out optimised for ENSPACE panel
- xxx:** length in m
- e:** colour cable jacket **Y:** singlemode
 V: OM4
 L: OM5
- B:** fire performance class Cca s1 d1 a1

LANmark-OF ENSPACE MTP/MTP Fibre Assembly

- Fibre assembly for installation inside the ENSPACE and Plug&Play panel
- Cable optimised for installation in Data Centre: small diameter, small bend radius and reduced weight
- Superior fire performance: Euroclass Cca s1,d0,a1
- Universal Polarity
- Pre-Term can be used together with MTP-LC modules for LC connectivity or with MTP-adaptor modules for parallel optics
- Male-male/pinned-pinned Pre-Terms
- Low loss insertion loss performance: max 0,3 dB per MTP connection for singlemode and multimode
- Fibre count: 12x, 24x, 48x and 96x
- Fibre type: OM4, Singlemode and OM5 on request

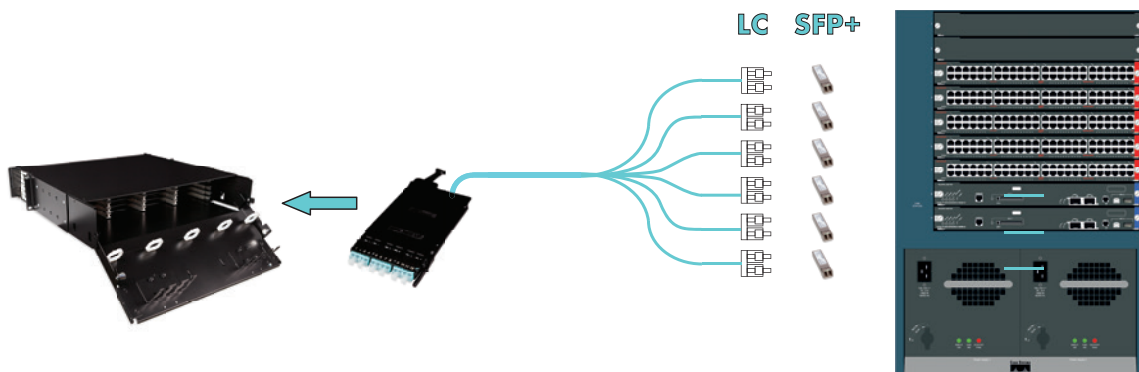


N15a.PnnnMMExxx-eB: ENSPACE MTP/MTP fibre assembly

- a:** fibre category **4:** Singlemode OS2
 7: Multimode OM4
 9: Multimode OM5
- P:** polarity for MPO/MPO Pre-Term **U:** Universal polarity
- nnn:** fibre count 12, 24, 48 or 96
- MM:** male-male Pre-Term
- E:** fan-out optimised for ENSPACE panel
- xxx:** length in m
- e:** colour cable jacket **Y:** Singlemode
 A: OM3
 V: OM4
- B:** fire performance class Cca s1, d1, a1

LANmark-OF ENSPACE Patching Assemblies

- High fibre count fibre assembly for connecting transceivers on switch and ENSPACE modules.
- Switch side has a 2mm fan-out with Uniboot DLC connector for connecting to SFP+ transceivers
- Panel side:
 - dual stage 900 µm LC fan-out for installation inside the ENSPACE panel with the LC ENSPACE adaptor modules
 - or male MTP-fan out for installation inside the ENSPACE panel with ENSPACE MTP-LC modules
- Micro-Bundle cable optimised for installation in Data Centre: small diameter, small bend radius and reduced weight
- Superior fire performance: Euroclass B2ca s1,d0,a1
- Low loss insertion loss performance: max 0,3 dB per LC connection
- Fibre count: 12x, 24x, 48x and 96x
- Fibre type: OM4, Singlemode and OM5 on request



N15a.SnnnUcdxxx-eB

- a:** fibre category **4:** Singlemode OS2,
 7: Multimode OM4
 9: Multimode OM5
- S:** Patching assembly ENSPACE
- nnn:** fibre count 12,24,48,96
- U:** Uniboot LC connector on switch side
- c:** connector inside panel **L:** LC-connector
 P: LC/APC connector
 M: male MTP connector
- d:** fan-out length switch side **A:** equal length 100cm
 B: equal length 150cm
 C: equal length 200cm
- xxx:** length in m
- e:** colour cable jacket **A:** OM3
 V: OM4
 L: OM5
- B:** fire performance class Cca s1, d1, a1

Guaranteed distances

LANmark-OF OM3

Products

- LANmark-OF OM3 cables terminated with LC/SC connectors or pigtails
- LANmark-OF OM3 LC/SC Pre-Terms

Ethernet distances

Applications # Connections	Pre-Terminated ST/SC/LC Assemblies				Direct termination or splicing with ST/SC/LC			
	2	4	6	8	2	4	6	8
1GBase-SX	940m	930m	920m	900m	900m	860m	800m	750m
10GBase-SR	350m	350m	340m	330m	340m	320m	300m	280m
25GBase-SR	85m	80m	80m	75m	75m	70m	60m	50m
40G BiDi	130m	125m	120m	115m	115m	110m	100m	90m

Fibre Channel Distances

Applications # Connections	Pre-Terminated ST/SC/LC Assemblies				Direct termination or splicing with ST/SC/LC			
	2	4	6	8	2	4	6	8
1GFC (PI-4 100-M5E-SN-I)	1200m	1180m	1140m	1100m	1100m	940m	800m	700m
2GFC (PI-4 200-M5E-SN-I)	700m	680m	660m	640m	640m	540m	440m	350m
4GFC (PI-5 400-M5E-SN-I)	440m	435m	430m	420m	420m	380m	340m	300m
8GFC (PI-5 800-M5E-SN-I)	200m	195m	185m	180m	180m	150m	125m	100m
16GFC (PI-5 1600-M5E-SN-I)	135m	130m	125m	120m	120m	95m	70m	40m
32GFC (PI-6 3200-5MFE-SN-I)	85m	85m	80m	75m	75m	65m	50m	35m
10GFC (10GFC 1200-M5E-SN-I)	350m	350m	340m	330m	340m	320m	300m	280m

LANmark-OF OM4/OM5

Products

- LANmark-OF OM4 or OM5 cables terminated with LC/SC connectors or pigtails
- LANmark-OF OM4 or OM5 LC/SC Pre-Terms

Ethernet distances

Applications ST/SC/LC # Connections	Pre-Terminated ST/SC/LC Assemblies				Direct termination or splicing with			
	2	4	6	8	2	4	6	8
1GBase-SX	970m	960m	940m	930m	930m	880m	820m	780m
10GBase-SR	550m	540m	530m	520m	520m	490m	460m	440m
25GBase-SR	120m	115m	110m	105m	105m	90m	70m	50m
40G BiDi	155m	150m	145m	140m	145m	140m	125m	115m

Fibre Channel Distances

Applications ST/SC/LC # Connections	Pre-Terminated ST/SC/LC Assemblies				Direct termination or splicing with			
	2	4	6	8	2	4	6	8
1GFC (PI-4 100-M5F-SN-I)	1250m	1230m	1200m	1150m	1140m	1000m	800m	700m
2GFC (PI-4 200-M5F-SN-I)	750m	740m	720m	680m	680m	560m	460m	360m
4GFC (PI-5 400-M5F-SN-I)	500m	490m	480m	470m	470m	420m	370m	330m
8GFC (PI-5 800-M5F-SN-I)	250m	245m	225m	220m	220m	190m	160m	130m
16GFC (PI-5 1600-M5F-SN-I)	165m	160m	155m	150m	150m	125m	95m	50m
32GFC (PI-6 3200-5MF-SN-I)	120m	115m	110m	100m	100m	90m	70m	50m
10GFC (10GFC 1200-M5F-SN-I)	550m	540m	530m	520m	520m	490m	460m	440m



LANmark-OF OM4/OM5 MPO

Products

- LANmark-OF OM4 or OM5 low loss MPO-MPO Pre-Term Assemblies
- LANmark-OF OM4 or OM5 low loss MPO-LC module

Ethernet distances-duplex transmission

# MTP-LC modules	2	4	6	8
1GBase-SX	930m	910m	890m	830m
10GBase-SR	520m	510m	500m	470m
25GBase-SR	105m	95m	85m	65m
40G BiDi	145m	140m	135m	125m

Ethernet distances-parallel transmission

# MTP connections	2	4	6	8
40GBase-SR4	170m	160m	150m	150m
40GBase-SR4 extended distances*	400m	360m	330m	300m
100GBase-SR4	120m	110m	110m	110m

* Aginode approved transceivers

Fibre Channel Distances-duplex transmission

# MTP-LC modules	2	4	6	8
1GFC (PI-4 100-M5F-SN-I)	1150m	1120m	1050m	950m
2GFC (PI-4 200-M5F-SN-I)	680m	660m	620m	550m
4GFC (PI-5 400-M5F-SN-I)	470m	450m	430m	380m
8GFC (PI-5 800-M5F-SN-I)	220m	215m	200m	160m
16GFC (PI-5 1600-M5F-SN-I)	150m	145m	130m	100m
32GFC (PI-6 3200-5MF-SN-I)	100m	95m	90m	75m
10GFC (10GFC 1200-M5F-SN-I)	520m	510m	500m	470m

LANmark-OF SM

Products

- LANmark-OF SM cables terminated with LC/SC connectors or pigtails
- LANmark-OF SM LC/SC Pre-Terms

LANmark-OF SM / Direct Termination, Splicing and Pre-Terminated*

Applications	2 connections	3 connections	4 connections	5 connections	6 connections
100 Base-SX	2000	-	-	-	-
1GBase-LX	5000	4900	4500	4000	3500
10GBase-LR	10 000	9000	7500	6000	4500
10GBase-LW	10 000	9000	7500	6000	4500
10GBase-LX4	10 000	8500	6750	5250	3500
4Gbit-FC (PI-5 400-SM-LC-L)	10 000	10 000	7500	6000	4000
8Gbit-FC (PI-5 800-SM-LC-L)	10 000	10 000	7500	6000	4000
10GBase-FC (1200-SM-LL-L)	10 000	9000	7500	6000	4500
10GBase-FC (1200-SM-LC4-L)	10 000	8500	6750	5250	3500
16Gbit-FC (PI-5 1600-SM-LC-L)	10 000	10 000	7500	6000	4000
40Gbase-LR4	10 000	10 000	9000	7000	5000
100Gbase-LR4	10 000	10 000	8000	6000	4000

* With one splice every 2 km between 2 connections if required.

LANmark-OF SM MPO

Products

- LANmark-OF SM low loss MPO-MPO Pre-Term Assemblies
- LANmark-OF SM low loss MPO-LC module

LANmark-OF SM /MPO low loss connectivity*

Applications	2 MPO modules	4 MPO modules	6 MPO modules	8 MPO modules
1GBase-LX	5000	3000	-	-
10GBase-LR	9000	7000	2500	-
4Gbit-FC (PI-5 400-SM-LC-L)	10 000	10 000	6000	3000
8Gbit-FC (PI-5 800-SM-LC-L)	10 000	8000	6000	3000
16Gbit-FC (PI-5 1600-SM-LC-L)	10 000	8000	6000	3000
40GBase-LR4	10 000	10 000	7000	4000
100GBase-LR4	10 000	10 000	6500	3500

* With one splice every 2 km between 2 connections if required.

LANmark Power-OF

The association of LANmark OF performance cable with the power, to provide data and power through a single cable and ensure high performance in long distance

LANmark Power-OF cable

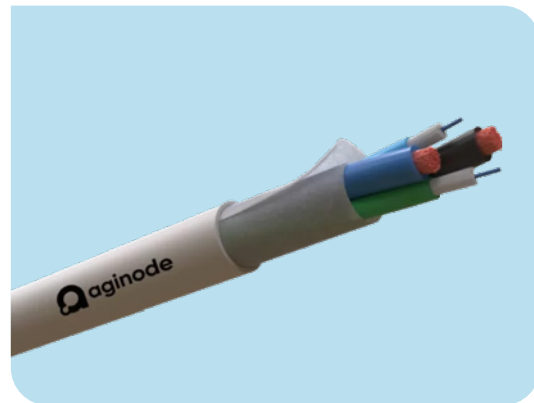
- Hybrid cable 2FO single mode + 2 copper wire 1.5mm²
- FO single mode G657.A2 : data transmission in long distance
- 2 copper wires 1.5mm²
- Flame retardant LSZH jacket with high fire behavior* : available in B2ca & Cca
- White cable for indoor use

Available without CPR for non EU countries

Reference

P/N B2ca : NFP1.A24A2A-WB

P/N Cca : NFP1.A24A2A-WC



LANmark Power-OF box

- Hybrid box to allow connection of IP devices by offering data and power
- Input : Hybride cable
- Output : LC OS2 patch cord through LC duplex adapters and power copper wires through mechanical push-wires termination
- The box can be provided unequipped or equipped with pigtail and adapters
- Wall installation
- Secure box locked by specific key

Reference

P/N: NFPB.4LD1M2.GE

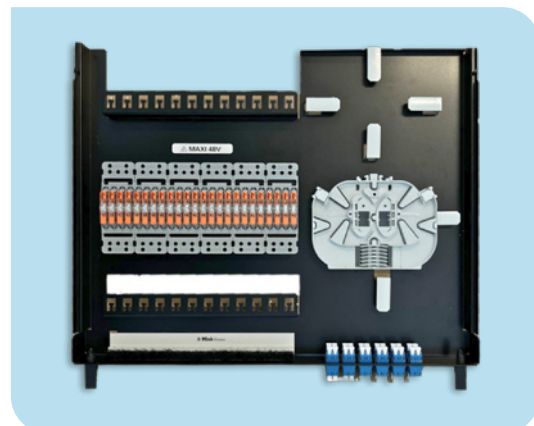


LANmark Power-OF panel

- Hybrid panel to allow termination of 12 hybride Power OF cable
- Offer routing of fiber optic through splicing cassette and allow termination of copper wires with push wire connector
- 19" format
- Equipped with 12LC duplex adapters and 24 push wires connector

Reference

P/N: NFPP.4LD12M241U.BE



LANmark™

Cabinet Rack Unit Solution



Rack Solutions

Cabinet Rack Unit Solution

Cabling Smart Building Rack

- 42U – available in several size 600/800/1000
- Robust metal construction offering a high loading capacity
- Front glass door (double on rack width 800)
- 19-Inch mounting front and rear
- Designed to host both copper and fibre cabling
- Full access cabinet with vertical cord management (800mm width only)
- Digital thermometer to monitor internal rack temperature

Several option and combination are available, don't hesitate to contact your Aginode sales representative



Server Data Center Rack

- 42U – available in several size 600/800/1000
- Robust metal construction offering a high loading capacity : 1500kg
- Perforated front & rear doors: 80% perforation ratio
- 19-Inch mounting front and rear
- Designed to host both copper and fibre cabling
- Robust metal construction
- Full access cabinet with vertical cord management (800mm width only)

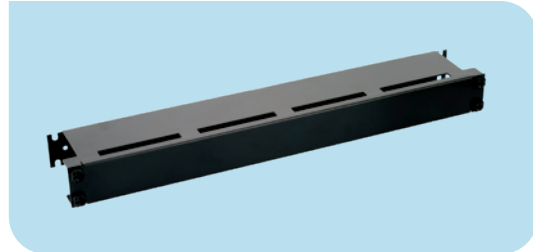
Several option and combination are available, don't hesitate to contact your Aginode sales representative



Rack management

Covered Patch Guide 1U

- Allows storage and management of copper and fibre patch cords
- 8cm depth
- Cover for tidy cabinet look
- Available in black and in white



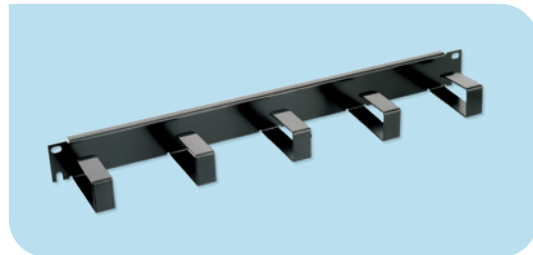
Covered Patch Guide 2U

- Allows storage and management of copper and fibre patch cords
- 8cm depth
- Cover for tidy cabinet look
- Available in black and in white



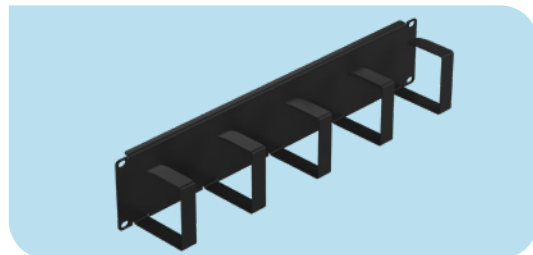
Metal Ring Patch Guide 1U

- Allows storage and management of copper and fibre patch cords
- Open structure with 5 rings for easy access
- 8cm depth
- Available in black and in white



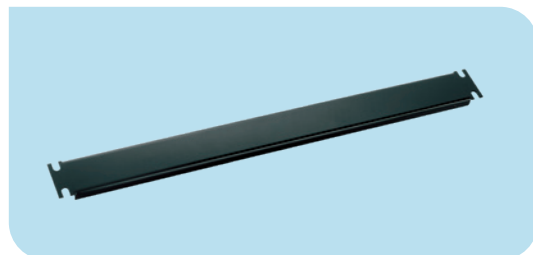
Metal Ring Patch Guide 2U Black

- Allows storage and management of copper and fibre patch cords
- Open structure with 5 rings for easy access
- 2U for maximised cord storage
- 8cm depth



Blank Panel 1U Black

- 19" 1U Blank Panel to fill unused cabinet space

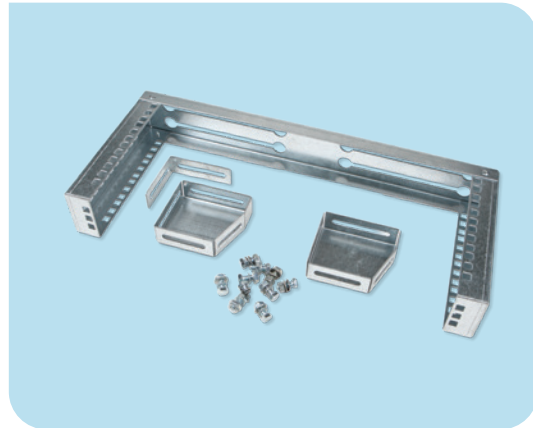


Reference
N102.117BK
N102.117
N102.127BK
N102.127
N102.105BK
N102.105
N102.125BK
N109.207BK

Description
Black
1U Covered Patch Guide White
2U Covered Patch Guide Black
2U Covered Patch Guide White
1U Metal Ring Patch Guide Black
1U Metal Ring Patch Guide White
2U Metal Ring Patch Guide Black
1U Blank Panel black

Overhead Patching Frame 4U or 6U

- 19-Inch 4U or 6U overhead frame
- Ideal in data centres
- Designed to host both copper and fibre cabling
- Metal construction
- Straight or angled position



Pair of Patch Cord Management Hooks Black for Overhead Patching Frame 4U and 6U

- Required to guide patch cords
on both sides of the frame
- Easy to mount with 2 screws and cage nuts
- Up to 3 hooks on each side
- Black flexible plastic



Reference

N345.400

N345.600

N345.401

Description

LANmark Overhead Patching Frame 4U

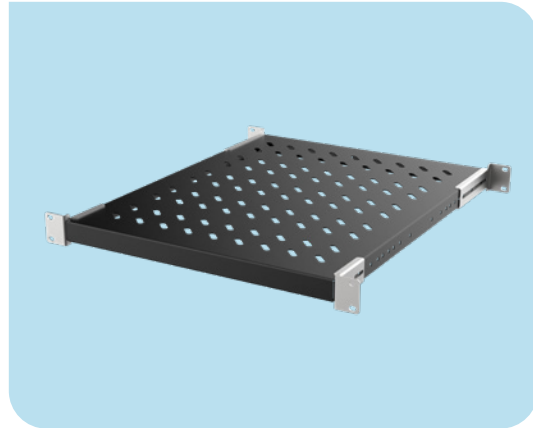
LANmark Overhead Patching Frame 6U

Pair of Patch Cord Management Hooks Black for Overhead Patching Frame 4U and 6U

Rack accessories

Shelves

- 19" format
- Fixed or sliding shelves
- Available in different depth



Fan

- Bloc equipped with 2 or 4 fans
- Bloc with 6 fans can be provided on request
- Compatible with Aginode RUS rack



Plinth

- Height 100mm
- Available in all size width/depth
- Compatible with Aginode RUS rack

Wheels

- Set of 4 wheels
- High loading capacity : 150kg per wheel
- Equipped with brakes (2wheels)

Internal cable tray

- Internal cable tray for RUS Aginode rack
- Available in width 100 or 200
- Galvanized steel Cabinets and accessories



LANactive

FTTO systems



LANactive FTTO systems

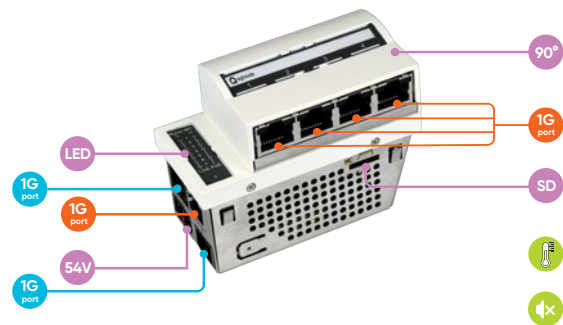
Aginode LANactive is an alternative LAN technology for use in office environments. Passive fibre cabling and active switches are combined to provide Gigabit Ethernet services from the central core switch to an FTTO switch and from there to end user devices. Although the entire network operates at 1 Gbps, throughput is as good as – or better than – that of a traditional network setup featuring floor distributors and an aggregated high-speed backbone. Performance is further supported by non-blocking switching and switches with 20 Gbps backplane.

LANactive switches ensure intelligent conversion from fibre to copper and vice versa. Each switch, installed at the workplace in cable ducts or floor boxes, is equipped with four copper RJ45 user ports to feed end user devices with data and power. Fibre speed, reliability and long distance coverage are coupled with the Ethernet benefits of copper. This solution meets current and foreseeable network requirements in terms of flexibility, cost efficiency and network interoperability. Regardless of their size and complexity, networks can be easily and cost-efficiently managed from a single location with the LANactive configuration and management platform from Aginode. Precise mapping of current infrastructure status makes it possible to track and repair faults or configuration errors fast, saving considerable time.

- Easy and fast to install, adjust and repair
- Avoiding floor distributors to save space, costs and energy
- Minimal cable volume and equipment footprint
- Highly scalable and flexible
- Increased protection of investments
- 10G available

Easy to install

Compact, discreet FTTO switches are installed in cable ducts or floor boxes. Despite their small form factor, the switches offer up to four copper RJ45 user ports for delivering data and power to end user devices. As this is delivered over a relatively short distance – the last few metres of the network – there is less power loss and less energy required.



Easy Configuration

Optional memory cards with MAC addresses always store the latest full switch configuration automatically. If a switch needs to be replaced, all you need to do is remove the memory card and insert it into the new switch. No special knowledge or training required.

Enhanced Energy Efficiency

LANactive access switches are located close to the end user. These replace switches that would normally be located in a floor distribution room, which would require HVAC systems, lighting and so on. The FTTO switch itself consumes a minimum of power for data transmission. Switches also support Energy Efficient Ethernet (IEEE 802.3az), so that energy is only consumed when data is transferred. Aginode EcoMode optimises data transfer modes, based on current user needs and preferences.

Data and Power

The switch draws current from an external power supply, which can power all connected devices. As this is delivered over a relatively short distance – the last few metres of the network – there is less power loss and less energy is required.

Secure

Aginode switches provide the ideal basis for secure Local Area Networks. Intelligent Management and security features increase the security of the network and restrict unwanted data traffic in the access layer.

Proven durability

LANactive solutions are based on selected industrial components, which are robust, durable and high performing. Aginode carries out ongoing quality controls following the latest standards (ISO 9001). The result: an MTBF value (Mean Time Before Failure) of over 400 years.

Less space

LANactive FTTO doesn't require the bulky horizontal copper cable bundles generally used in traditional installations. This improves accessibility whilst reducing cabling volume by up to three-quarters. A considerable amount of room is saved in racks and cable pathways, adding up to considerable space savings on every floor. As fibre cabling requires no electrical grounding or shielding and is slimmer than copper conductors, it has a smaller overall cable diameter.

Longer distances

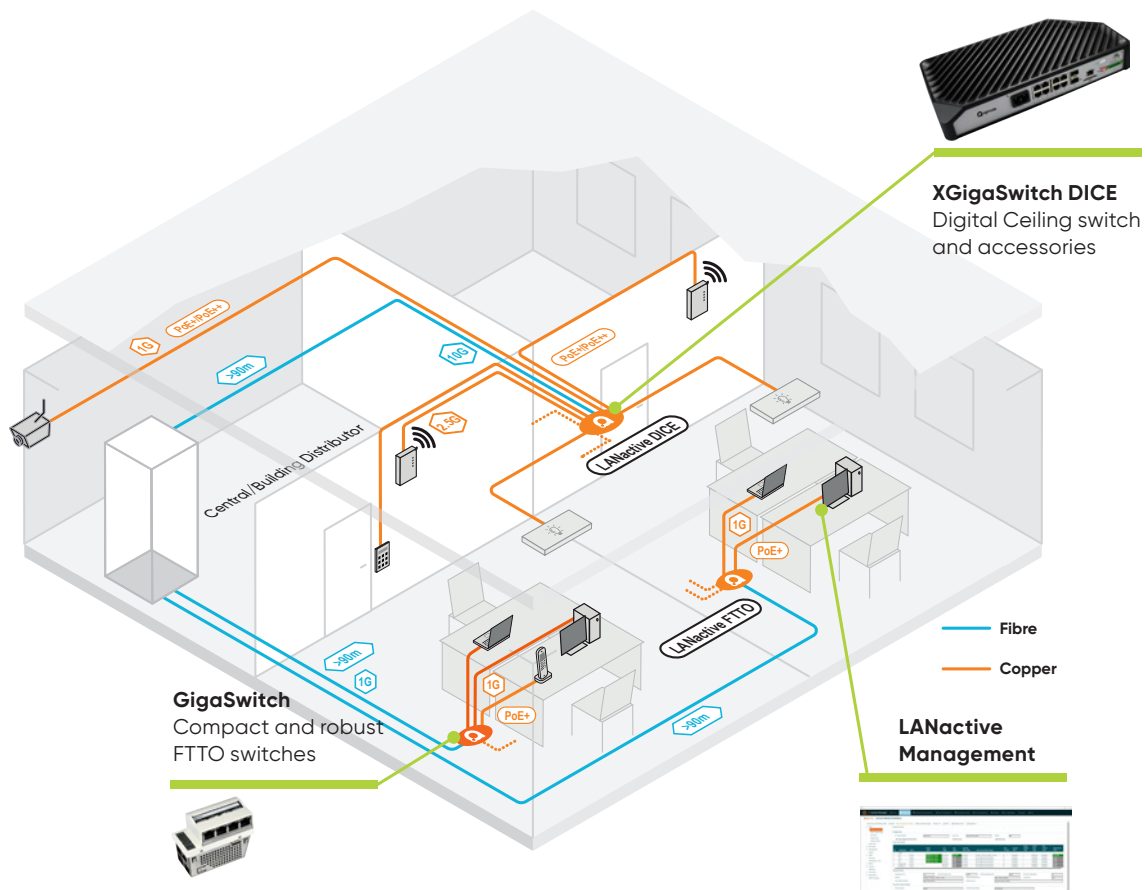
Fibre breaks through copper's 90-metre distance limit. Large distances, spanning hundreds of metres, between buildings, campuses and industrial sites can be easily bridged by fibre.

Flame retardant and fire retardant

Cabling used in an FTTO installation has outstanding flame retardant (IEC 60332-1) and fire retardant (IEC 60332-3) properties. Fibre cables comply with different fire performance classes and three additional criteria (smoke production, flaming droplets and acidity). These have been defined as part of the EU Construction Products Regulation (CPR) that now governs cable usage in buildings. In addition, the reduced cable volume and use of smaller bundles significantly reduce fire load, enhancing safety and making compliance with relevant regulations easier.

No interference

Fibre needs no grounding or earthing. Unlike copper, fibre is immune to electromagnetic interference and may run along power lines.



GigaSwitch family

7-Port FTTO Switch with up to three SFP Uplinks for 54V DC

- 3 Uplink ports (2x SFP+ and 1x RJ45) or
- 3 Uplink ports (3x SFP+)
- Power over Ethernet (PoE++) up to 60 Watts per port
- Energy Efficient Ethernet
- Memory Card Slot
- Wide Input Voltage Range 46 ... 57V DC (typ. 54V DC)

Reference	Description
88316722	XGigaSwitch V6 TP(PSE++) 2SFP+ 54V DC User Ports (RJ45): 4x 1000Base-T Uplink Ports (SFP): 2x 1/10Gbps Uplink Ports (RJ45): 1x 10GBase-T No of PoE User Ports: 4x PSE(PoE+) No of PoE Uplink Ports: 1x PSE(PoE++)
88316723	XGigaSwitch V6 3SFP+ 54V DC User Ports (RJ45): 4x 1000Base-T Uplink Ports (SFP): 3x 1/10 Gbit/s Uplink Ports (RJ45): - No of PoE User Ports: 4x PSE(PoE+) No of PoE Uplink Ports: -



7-Port FTTO Switch with two SFP Uplinks and 54V DC Powered

- 3 Uplink Ports (2x SFP and 1x RJ45)
- Power over Ethernet (PoE+), up to 150W
- Efficient Energy Management
- Memory Card Slot
- Input voltage range 46 ... 57V DC

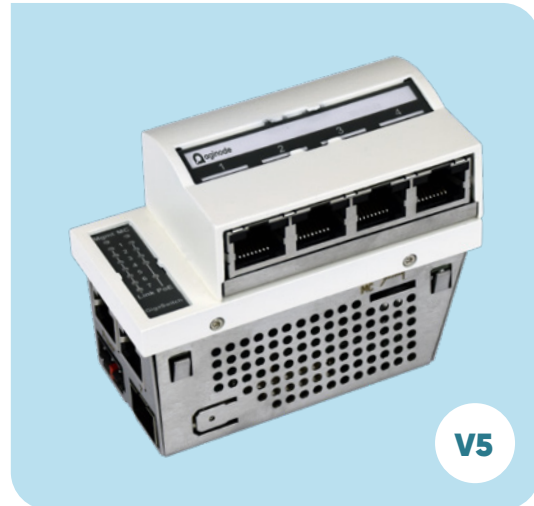
Reference	Description
88303910	GigaSwitch V5 TP(PSE+) SFP-2VI 54VDC User Ports (RJ45): 4x 1000Base-T Uplink Ports (SFP): 2x 1000Mbps Uplink Ports (RJ45): 1x 1000Base-T No of PoE User Ports: 4x PSE(PoE+) No of PoE Uplink Ports: 1x PSE(PoE+)
88303920	GigaSwitch V5 TP SFP-2VI 54VDC User Ports (RJ45): 4x 1000Base-T Uplink Ports (SFP): 2x 1000Mbps Uplink Ports (RJ45): 1x 1000Base-T No of PoE User Ports: 4x PSE(PoE+) No of PoE Uplink Ports: -



7-Port FTTO Switch with one SFP Uplink and 54V DC Powered

- 3 Uplink Ports (1x SFP and 2x RJ45)
- Powered Device - remote powering via Power over Ethernet
- Power over Ethernet (PoE+), up to 150Watts
- Efficient Energy Management
- Memory Card Slot
- Input Voltage Range 46 ... 57V DC

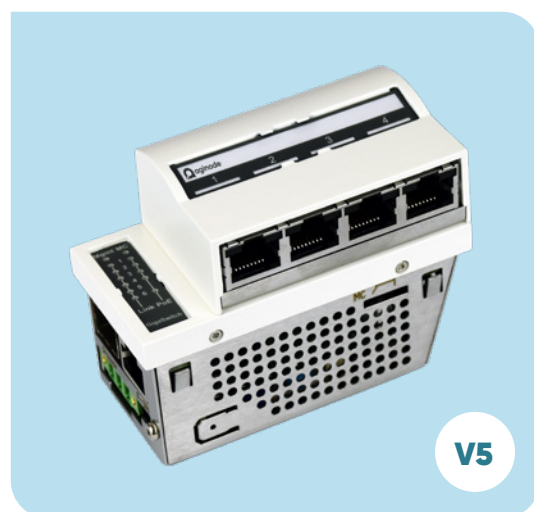
Reference	Description
88303990	GigaSwitch V5 2TP(PSE+) SFP-VI 54VDC User Ports (RJ45): 4x 1000Base-T Uplink Ports (SFP): 1x 1000Mbps Uplink Ports (RJ45): 2x 1000Base-T No of PoE User Ports: 4x PSE(PoE+) No of PoE Uplink Ports: 2x PSE(PoE+)
88303991	GigaSwitch V5 2TP(PD-F+) SFP-VI 54VDC User Ports (RJ45): 4x 1000Base-T Uplink Ports (SFP): 1x 100/1000Mbps Uplink Ports (RJ45): 2x 1000Base-T No of PoE User Ports: 4x PSE(PoE+) No of PoE Uplink Ports: 1x PD, 1x PSE (PoE+)
88303992	GigaSwitch V5 2TP SFP-VI 54VDC User Ports (RJ45): 4x 1000Base-T Uplink Ports (SFP): 1x 1000Mbps Uplink Ports (RJ45): 2x 1000Base-T No of PoE User Ports: 4x PSE(PoE+) No of PoE Uplink Ports: -



6-Port FTTO Switch with one or two SFP Uplinks and 230V ACP powered

- 2 Uplink Ports (1x SFP and 1x RJ45 or 2x SFP)
- Efficient Energy Management
- Memory Card Slot
- Wide input voltage range 85 ... 240V AC

Reference	Description
88303975	GigaSwitch V5 TP SFP-VI 230VAC User Ports (RJ45): 4x 1000Base-T Uplink Ports (SFP): 1x 1000Mbps Uplink Ports (RJ45): 1x 1000Base-T No of PoE User Ports: - No of PoE Uplink Ports: -
88303971	GigaSwitch V5 SFP-2VI 230VAC User Ports (RJ45): 4x 1000Base-T Uplink Ports (SFP): 2x 1000Mbps Uplink Ports (RJ45): - No of PoE User Ports: - No of PoE Uplink Ports: -



Medical series

7-Port FTTO Switch with two SFP uplinks and 54V DC powered, Medical series

- 3 Uplink Ports (2x SFP and 1x RJ45)
- 4 Isolated User Ports (4kV and 2MOPP)
- Efficient Energy Management
- Memory Card Slot
- Input Voltage Range 46 ... 57V DC

Reference	Description
88303611	GigaSwitch V5 TP(PSE+) SFP-2VI 54VDC MED User Ports (RJ45): 4x 1000Base-T Uplink Ports (SFP): 2x 1000Mbps Uplink Ports (RJ45): 1x 1000Base-T No of PoE User Ports: - No of PoE Uplink Ports: 1x PSE(PoE+)
88303612	GigaSwitch V5 TP SFP-2VI 54VDC MED User Ports (RJ45): 4x 1000Base-T Uplink Ports (SFP): 2x 1000Mbps Uplink Ports (RJ45): 1x 1000Base-T No of PoE User Ports: - No of PoE Uplink Ports: -



6-Port FTTO Switch with one or two SFP uplinks and 230V AC powered, Medical series

- 2 Uplink Ports (2x SFP or 1x SFP and 1x RJ45)
- 4 Isolated User Ports (4kV and 2MOPP)
- Efficient Energy Management
- Memory Card Slot
- Input Voltage Range 85 ... 240V AC

Reference	Description
88303658	GigaSwitch V5 TP SFP-VI 230VAC MED User Ports (RJ45): 4x 1000Base-T Uplink Ports (SFP): 1x 1000Mbps Uplink Ports (RJ45): 1x 1000Base-T No of PoE User Ports: - No of PoE Uplink Ports: -
88303603	GigaSwitch V5 SFP-2VI 230VAC MED User Ports (RJ45): 4x 1000Base-T Uplink Ports (SFP): 2x 1000Mbps Uplink Ports (RJ45): - No of PoE User Ports: - No of PoE Uplink Ports: -



Industrial series

7-Port FTTO Switch with two SFP uplinks and 54V DC powered, Industrial series

- 3 Uplink Ports (2x SFP and 1x RJ45)
- Robust Metal Housing and Compact Hardware Design
- Efficient Energy Management
- Memory Card Slot
- Input voltage range 46 ... 57V DC
- -25 ... +60°C

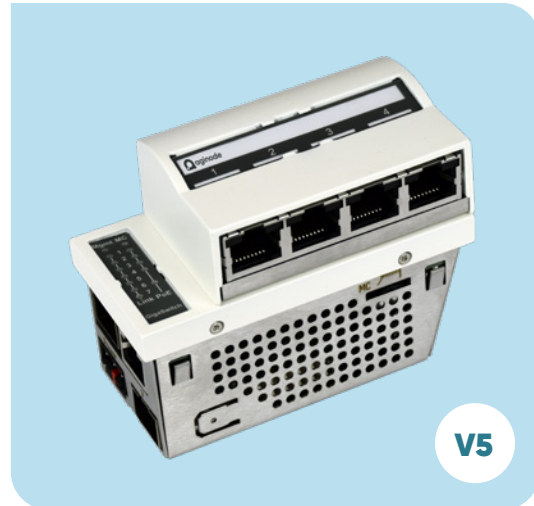
Reference Description

88303960 GigaSwitch V5 TP(PSE+) SFP-2VI 54VDC IND

88313960	User Ports (RJ45):	4x 1000Base-T
	Uplink Ports (SFP):	2x 1000Mbps
	Uplink Ports (RJ45):	1x 1000Base-T
	No of PoE User Ports:	4x PSE(PoE+)
	No of PoE Uplink Ports:	1x PSE(PoE+)

88303965 GigaSwitch V5 TP SFP-2VI 54VDC IND

88313961	User Ports (RJ45):	4x 1000Base-T
	Uplink Ports (SFP):	2x 1000Mbps
	Uplink Ports (RJ45):	1x 1000Base-T
	No of PoE User Ports:	4x PSE(PoE+)
	No of PoE Uplink Ports:	-



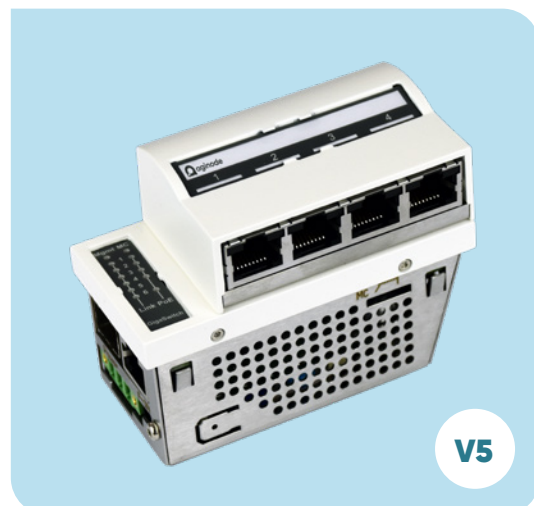
6-Port FTTO Switch with one SFP uplink and 230V AC powered, Industrial series

- 2 Uplink Ports (1x SFP and 1x RJ45)
- Robust Metal Housing and Compact Hardware Design
- Efficient Energy Management
- Memory Card Slot
- Wide input voltage range 85 ... 240V AC
- -25 ... +60°C

Reference Description

88303963 GigaSwitch V5 TP SFP-VI 230VAC IND

	User Ports (RJ45):	4x 1000Base-T
	Uplink Ports (SFP):	1x 100/1000Mbps
	Uplink Ports (RJ45):	1x 1000Base-T
	No of PoE User Ports:	-
	No of PoE Uplink Ports:	-



LANactive PoE++ Head

- PoE++ upgrade for current Aginode LANactive FTTO series
- 4x 1000Base-T ports with PoE++ acc. to IEEE802.3bt
- 4x PoE++ with up to 60W output power (Type 3)
- Total power budget max. 120W

Reference	Description
88303649	LANactive PoE++ Head GigaSwitch Kit Single head module for upgrades
88303648	LANactive PoE++ Head, pre-installed An option for new switches to be delivered directly with a PoE++ head



Memory Cards

The optional memory card automatically ensures complete and up-to-date configuration and firmware of the system. In addition, each memory card has its own MAC address.

- microSD Card
- Storing the switch configuration
- Each memory card with its own MAC address
- Ensures easy configuration and replacement of switch systems
- Extended temperature range
- Suitable for Aginode GigaSwitch FTTO installation and desk systems



Reference	Description	TYPE
88300691	Aginode micro SD memory card for GigaSwitch or GigaSwitch IND	Micro SD

LANactive DICE systems

Boost efficiency, reduce energy usage and be ready for tomorrow!

A growing number of IoT (Internet of Things) devices are demanding ever more powerful IT networks. Bandwidth requirements are increasing rapidly (so do power & data), owing to more devices being connected to networks and more cloud applications and mobile devices being used.

Today, with the latest Wireless LAN standards the available bandwidth at the access level increases again and established network connections are reaching its limits. This makes it necessary to think about new technologies to transport the upcoming data traffic.

In addition to the Wireless LAN application, smart building systems are being increasingly integrated into the IP network. In this case, it is not bandwidth that is typically to the fore, but instead the provision of data and power, supporting applications like connected lighting, smart sensors and heating, air conditioning and security systems.

To implement and manage all this in a cost and resource efficient way, while ensuring the IT networks flexibility, Aginode has developed a "Fibre in the Digital Ceiling" concept.

Basically, a data/power/control network is connected throughout an entire building via an overhead honeycomb configuration, offering a significant number of (powered) connection points. This way, devices can be linked to building automation. Network switches, sensors, controls, WLAN access points and other distributed building services are simply plugged in and immediately powered and connected to the network.

- The core component is the new Aginode LANactive Ethernet switch "DICE".
- "DICE" is optimized for a smooth installation in the digital ceiling. Based on a modern design it can be integrated seamlessly into the smart building of tomorrow.

Advantages of LANactive DICE

- Meets current and future network requirements of smart buildings
- Scalable upgrading of existing and new network infrastructures
- Fibre based technology to serve future requirements of security, high bandwidth and energy savings
- Fast and flexible provisioning of data and services (WLAN) exactly where they are needed
- Sustainable and cost-efficient management and maintenance of the network

Features

- 2x 10 Gbps SFP+ uplinks
- 4x MultiGigabits access ports for connection of bandwidth consuming applications
- 4x Gigabit access ports for connecting further IP equipment such as monitoring cameras, intelligent lighting or building systems (Smart Building)
- Access ports are featured with PoE++ with up to 90W

In conjunction with the established LANactive FTTO concept, a maximum performance and flexibility of the IT infrastructure can be achieved, in a way that enhances user experience while reducing energy usage.

Aginode recent product innovation "DICE" is a major step towards further developing the company's new product platform supporting high bandwidth (10G) and smart building applications.

XGigaSwitch DICE

LANactive XGigaSwitch is optimized for supporting Wireless LAN infrastructures. Based on MultiGigabit and 10 Gigabit SFP+ interfaces the switch is able to support the bandwidth required by the latest Wireless LAN standards.

Access Ports

The XGigaSwitch has eight Access Ports connecting Wireless LAN Access Points, IP Cameras, Connected Lighting or Smart Building Systems. Four Access Ports supporting MultiGigabit to avoid any bottleneck with the latest WLAN technology standards.

Power over Ethernet

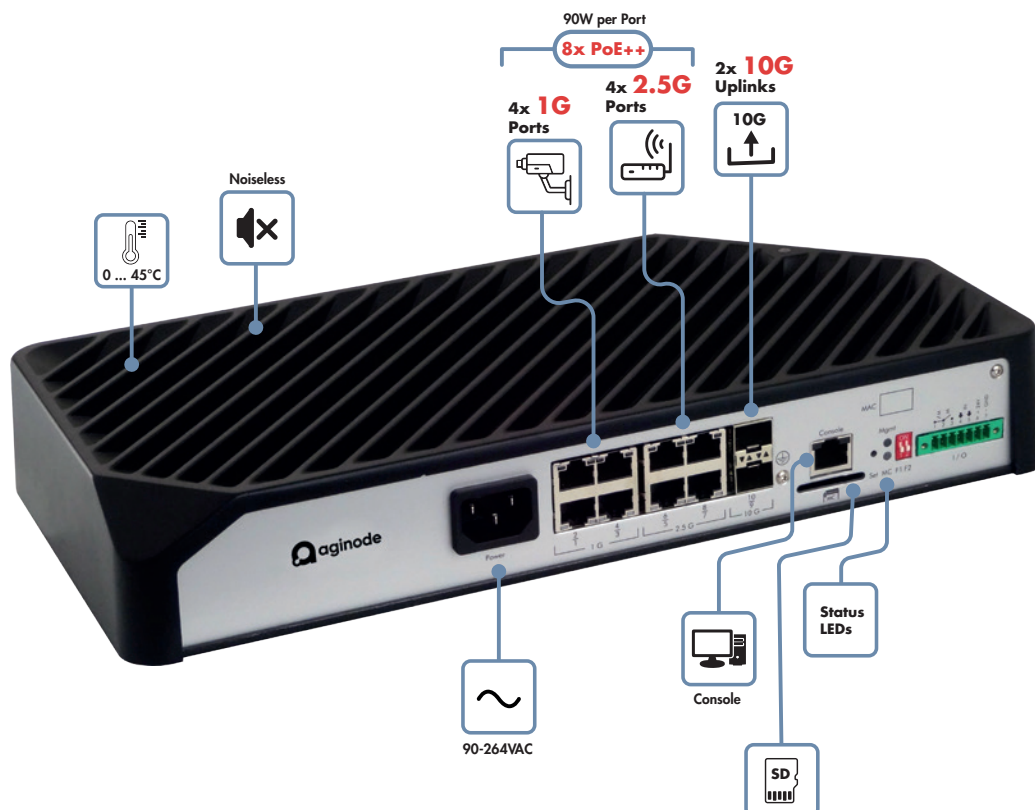
The latest Power over Ethernet standard IEEE802.3bt enables the remote powering with up to 90W per port. Equipment like Wireless LAN Access Points, IP-Cameras, Connected Lighting or Smart Building Systems can be supplied with power from the switch directly. The Power over Ethernet functionality can be parametered, controlled and monitored via management.

Ceiling Installation

The very compact design allows various mounting options and is honoured with the Red Dot design award. In combination with the fanless design and the noiseless operation the installation can be e.g. in offices or in visible areas.

Memory Card

The optional memory card automatically saves the complete current configuration and firmware of the device. In case of failure, this feature allows an easy exchange of the hardware without additional configuration. In addition, each memory card can be delivered with its own MAC address that is adopted by the switch.



XGigaSwitch DICE 8TP 2SFP+ AC

The LANactive XGigaSwitch DICE is optimised for supporting Wireless LAN infrastructures. Based on MultiGigabit copper and 10 Gigabit SFP+ interfaces the switch is able to support the bandwidth required by the latest Wireless LAN standards.

- 2 Uplink Ports (SFP+) and 8 Access Ports (RJ45)
- Power over Ethernet (PoE++) up to 90Watts per port
- Energy Efficient Ethernet
- Memory Card Slot
- Wide Input Voltage Range 90 ... 264V AC



Reference	Description
88306800	XGigaSwitch 8TP 2SFP+ AC User Ports (RJ45): 4x 1000Base-T and 4x 2.5GBase-T Uplink Ports (SFP+): 2x 1/10Gbps Power Cable/Connector: 1,5m with Power Connector (CEE 7/4)

XGigaSwitch DICE 8TP 2SFP+ DC

The new LANactive XGigaSwitch is optimised for supporting Wireless LAN infrastructures. Based on MultiGigabit copper and 10 Gigabit SFP+ interfaces the switch is able to support the bandwidth required by the latest Wireless LAN standards.

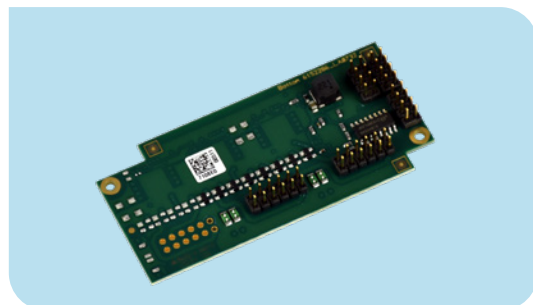
- 2 Uplink Ports (SFP+) and 8 Access Ports (RJ45)
- Power over Ethernet (PoE++) up to 90Watts per port
- Energy Efficient Ethernet
- Memory Card Slot
- Wide Input Voltage Range 46 ... 57V DC



Reference	Description
88306801	XGigaSwitch DICE 8TP 2SFP+ DC User Ports (RJ45): 4x 1000Base-T and 4x 2.5GBase-T Uplink Ports (SFP+): 2x 1/10Gbps Power Cable/Connector: 3-pin connector with plug-in screw terminal

iOption PoE+ or PoE++

The latest Power over Ethernet standard IEEE802.3bt enables the remote powering with up to 90 Watts per port. Equipment like Wireless LAN Access Points, IP-Cameras, Connected Lighting or Smart Building Systems can be supplied with power from the switch directly. The Power over Ethernet functionality can be parametered, controlled and monitored via management.



Reference	Description
88301604	iOption PoE+ 6/8P-30W, 8x PoE+ (IEEE802.3at) 8x PoE+
88301666	iOption PoE++ 6/8P-90W, 8x PoE++ (IEEE802.3bt) 8x PoE++

LANactive DICE accessories

Memory Cards

Aginode memory cards have an integrated and unique MAC address that is taken over by the switch. The memory cards are used as backup location for the current switch configuration and firmware.

Reference	Description
88300692	SD Memory Card with MAC-Address Delivery: Separately in plastic case
88300696	SD Memory Card with MAC-Address plugged Delivery: Pre-installed in the switch



Desktop Power Supply 54VDC

- Power Supply for Aginode XGigaSwitch series
- Full PoE (IEEE 802.3af, at and bt) compatible
- Fanless design
- Output Power: 65W or 240 Watts
- Control-LED
- Primary Connection (100-240V AC) via C14 connector
- Secondary connection (54V DC):
 - Three core wire H03VV cord, 1m, with moulded 3-pin connector
- Mutual connection of function earth
- Low Voltage Directive „Protection Class I“



Reference	Description
88646283	Desktop Power Supply 54VDC/240W
88646077	Power Supply with Schuko 54VDC/65W

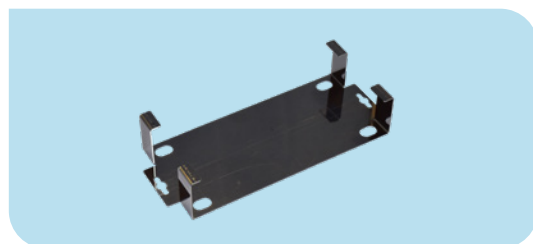
Desktop Power Supply 54VDC

Reference	Description
88646208	Power cable, H05VV-F 3G1, 2m, black Site A: CEE 7/4 Site B: IEC-Lock C13



Mounting Kit for Power Supply 240W

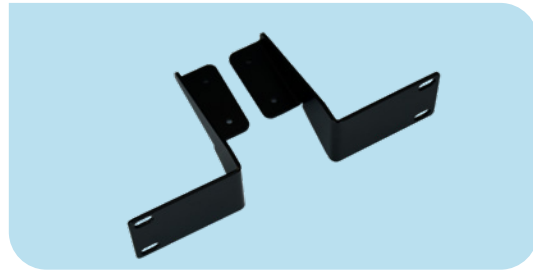
Reference	Description
88646214	Power cable, H05VV-F 3G1, 2m, black Mounting Kit for Power Supply 240W, stainless steel, for 88646283



19" Mounting Kit

The 19" Mounting Kit allows an easy installation of the XGigaSwitch DICE in 19" racks. The brackets are mounted sideways.

Reference	Description
88646402	XGigaSwitch DICE 19" Mounting Kite Colour: Deep Black, like RAL 9005

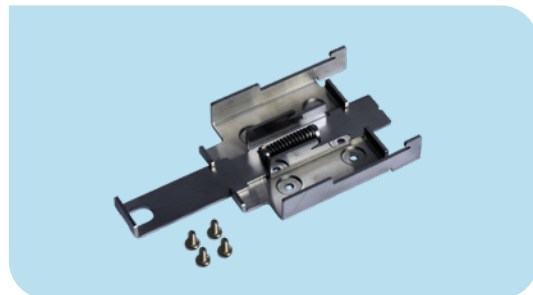


DIN-Rail Mounting Kit

The DIN-Rail Mounting Kit allows an easy installation of the XGigaSwitch DICE on standard DIN-Rails. The clip is fixed on the backside of the switch.

Reference	Description
88306811	XGigaSwitch DIN-Rail Mounting Kit Colour: Unpainted, stainless-steel

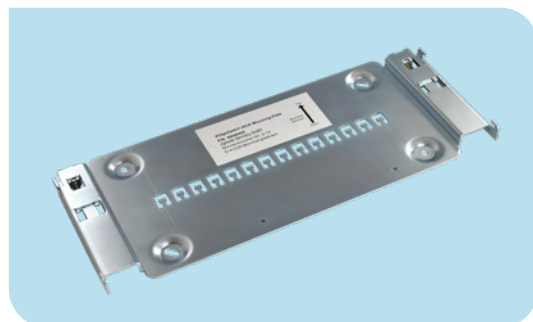
Installation example



Mounting Plate

The Mounting Plate allows an easy and smart installation of the LANactive XGigaSwitch DICE. It can be mounted on walls or below the ceiling and has an integrated fixing mechanism for the active switch. After installation of the plate the XGigaSwitch DICE can be mounted toolless. The integrated strain-relief allows a safe and protected installation of copper or fibre optic cables.

Reference	Description
88646400	XGigaSwitch DICE Mounting Plate Colour: Unpainted, stainless-steel Dimensions (W x H x D): 334 x 140 x 21mm



Strain-relief

In case the integrated strain-relief is not sufficient, an external additional strain-relief can be added to fix the cables in front of the XGigaSwitch DICE.

Reference	Description
88646400	XGigaSwitch DICE Strain-Relief Colour: Unpainted, stainless-steel Dimensions (W x H x D): 197 x 150 x 24mm

Installation examples

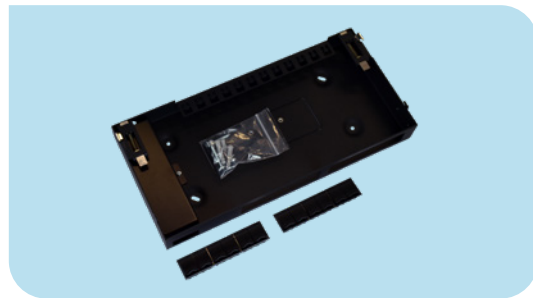


DICE Mounting Frame

The DICE Mounting Frame allows the installation and termination of the needed network and power cables. It offers the installation of up to 12 snap-in connectors terminating copper and/or fibre cables.

It is also possible to connect the power cabling via WAGO or Wieland connector. After installation of the DICE Mounting Frame the XGigaSwitch DICE can be mounted toolless.

Reference	Description
88646470	DICE Mounting Frame Colour: Deep black, like RAL 9005 Dimensions (W x H x D): 335 x 170 x 40mm

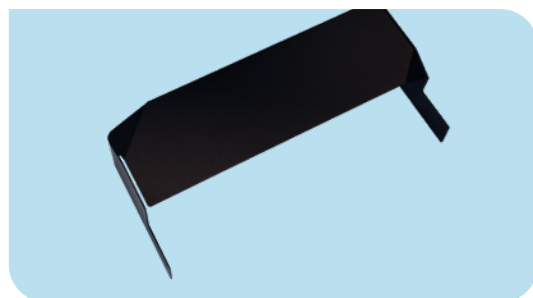


DICE Mounting Frame Cable Protection

To protect the cabling for unauthorised access the Cable Protection can be used.

Reference	Description
88646472	DICE Mounting Frame Cable Protection Colour: Deep black, like RAL 9005 Dimensions (W x H x D): 337 x 157 x 90 mm

Installation examples



iGigaSwitch Series

Managed Industrial Ethernet switches

Aginode managed Industrial Ethernet family is part of Aginode LANactive Industry product portfolio and designed for installing robust and reliable networks in harsh environments.

LANactive Industry iGigaSwitch family is designed to provide maximum network availability, security, longest lifetime in harsh environments and making the network maintenance easier. The iGigaSwitch family provides great flexibility in network design – it has up to 16 Gigabit ports and up to 12 SFP ports. The iGigaSwitch is designed for DIN-Rail mounting and comes with an external power supply to operate in the needed power range.

I/O Interfaces

The I/O interfaces of the iGigaSwitch allows a fast, simple and low-cost integration of non-IP based devices directly e.g. different sensors, controllers, buttons etc. The iGigaSwitch is offering extensive management functionalities with interactions, sending of messages as well as the activation of alarms.

PoE/PoE+/PoE++

Up to 12x connected Ethernet devices can be supplied with Power over Ethernet according to

IEEE 802.3at (PoE+) with up to 30 watts per port and a total budget of 360 watts. The iGigaSwitch 1004 E+ SFP-4VI HW5 is able to provide PoE++ according to IEEE 802.3bt, with 90W (Type 4) per port and a total budget of 540W per switch.

IEC 61850

Aginode iGigaSwitch family comply to IEC 61850 requirements (parts 6, 7-1, 7-2, 7-3, 7-4, 8-1, 9-1 and 9-2 Communication networks and systems for power utility automation). This functionality is critical for Smart grid and allows to use standardized equipment to ensure correct and reliable communication of all networked devices of Smart grid infrastructure (including switches, PLCs, different controllers, sensors etc.) with each other and with central SCADA. The compliance is tested and confirmed by KEMA/DNV-GL.

Easy maintenance

There is an extensive range of Industrial Ethernet switch functionalities to make the network maintenance much easier. In many cases, network infrastructures are scattered over wide areas – Smart grid, industrial of infrastructures sites, oil and

gas application, IP video surveillance and security systems in campuses or cities, etc.

Aginode switches have an extensive diagnostic functionality to provide a wide range of information about their condition, temperature, power level, ports usage, PoE and many others. Alerts can be defined for many parameters to automate IT maintenance processes.

The cable diagnostic function of Aginode industrial switches ensures an easy and fast localisation of possible faults on the connected Twisted Pair copper cables. An identification of short circuits, interruptions, impedance mismatches or reversals can be localised up to the meter via the management feature.

By using SFP modules with Digital Diagnostic Monitoring Function in our Aginode iSwitch systems you are able to monitor the optical parameters (optical input power, optical output power, laser bias current) and to recognize upcoming problems with the fibre optic link at an early stage!

SD cards with unique MAC address – this option makes network maintenance easier by simplifying several processes like switches setup and replacement. This option will help to utilize the IT staff recourses smarter and more efficient.

LANactive Manager (Aginode switch configuration and management platform) is an easy-to-use intuitive and efficient solution to supervise, manage and configure for Aginode switches.

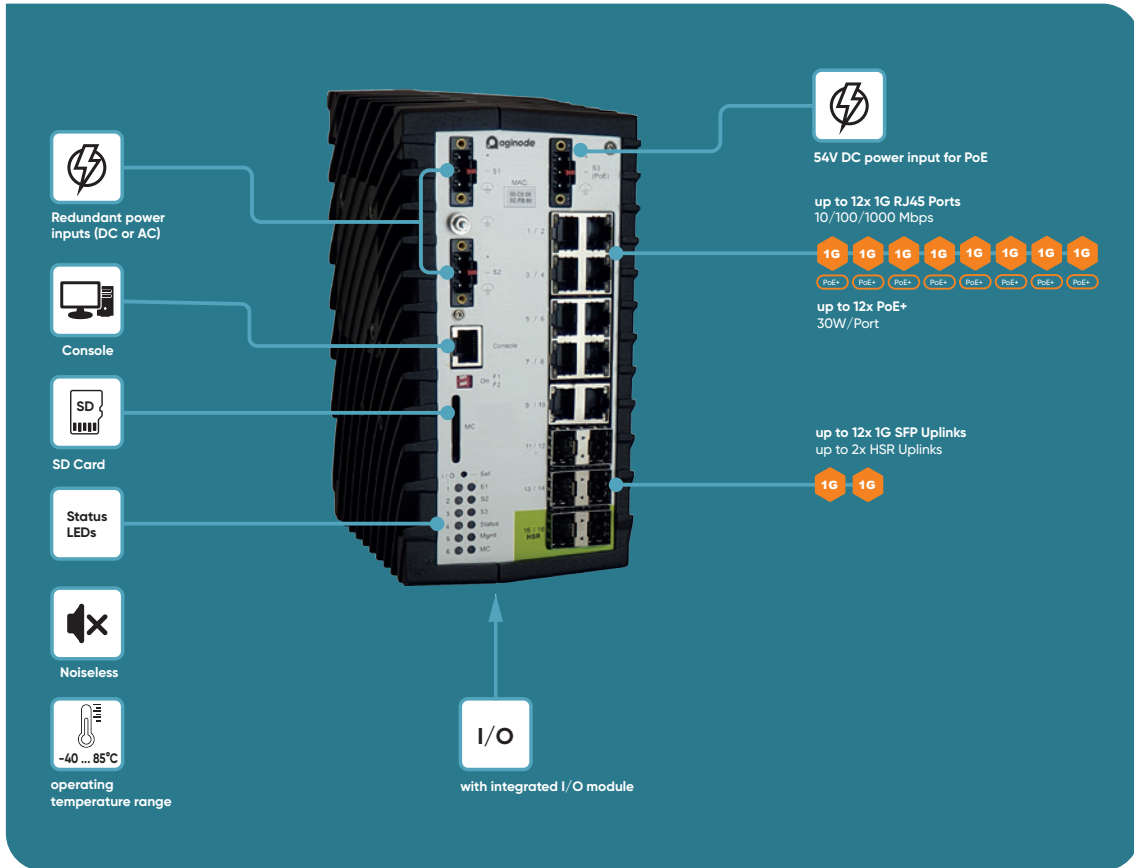
Interoperability

Aginode Industrial Ethernet switches offer tested and approved interoperability, including its proprietary protocols, with a wide range of manufacturers, including Cisco, HP, Alcatel Lucent (Nokia), Extreme Networks, etc.

Aginode iGigaSwitch family can operate in various SCADAs.

Management

- WEB/SNMP/SSH/V.24 management
- Enhanced security features by providing controlled access to the management data through different authentication levels, port security and encrypted communication (SCP, SSHv2, HTTPS, RADIUS, SNMPv3, IEEE 802.1X etc.)
- Integration to any SNMP based management platform
- Easy configuration of large number of switches via LANactive Manager (administration tool)
- IPv6 according to IPv6 Forum phase 2 core specification



iGigaSwitch Systems

iGigaSwitch 10xx (18 ... 60V DC)

- 10 ports in total, variable number of SFP ports
- Up to 8 PoE+ ports with max. 240W power budget
- Up to 6 PoE++ ports with max. 540W power budget
- Built-in I/O module with 2 input and 2 output ports
- Wide operating temperature range, -40 ... +85°C
- Wide input power range, 18 ... 60V DC

Reference	Description
88306422	iGigaSwitch 1002 E+ SFP-2VI HW5 RJ45 Ports: 8x 10/100/1000 Mbps SFP Ports: 2x 100/1000 Mbps
88306424	iGigaSwitch 1004 E+ SFP-4VI HW5 RJ45 Ports: 6x 10/100/1000 Mbps SFP Ports: 4x 100/1000 Mbps
88306428	iGigaSwitch 1008 E+ SFP-8VI HW5 RJ45 Ports: 2x 10/100/1000 Mbps SFP Ports: 8x 100/1000 Mbps



iGigaSwitch 10xx (12/24V DC)

- 10 ports in total, variable number of SFP ports
- Up to 8 PoE+ ports with max. 240W power budget
- Up to 6 PoE++ ports with max. 540W power budget
- Built-in I/O module with 2 input and 2 output ports
- Wide operating temperature range, -40 ... +85°C
- Input power range 10.8 ... 36V DC

Reference	Description
88306442	iGigaSwitch 1002 E+ SFP-2VI 12/24V HW5 RJ45 Ports: 8x 10/100/1000 Mbps SFP Ports: 2x 100/1000 Mbps



iGigaSwitch 1202 HSR (AC)

- 12 ports in total, 10x RJ45 and 2x SFP ports for HSR
- Optionally with integrated I/O module
- IEC 61850 compliancy is tested and certified by KEMA/DNV-GL
- Wide operating temperature range: -40 ... +70°C
- Wide input power range 90 ... 264V AC
- or 127 ... 370V DC

Reference	Description
88306432	iGigaSwitch 1202 HSR SFP-2VI AC HW5 RJ45 Ports: 10x 10/100/1000 Mbps SFP (HSR) Ports: 2x 100/1000 Mbps



iGigaSwitch 16xx (18 ... 60V DC)

- 16 ports in total, variable number of SFP ports
- Up to 12x PoE ports with max. 360W power budget
- Optionally with integrated I/O module
- IEC 61850 compliancy is tested and certified by KEMA/DNV-GL
- Wide operating temperature range: -40 ... +85°C
- Wide input power range, 18 ... 60V DC

Reference	Description
88306504	iGigaSwitch 1604 E+ SFP-4VI HW5 RJ45 Ports: 12x 10/100/1000 Mbps SFP Ports: 4x 100/1000 Mbps
88306508	iGigaSwitch 1608 E+ SFP-8VI HW5 RJ45 Ports: 8x 10/100/1000 Mbps SFP Ports: 8x 100/1000 Mbps
88306512	iGigaSwitch 1612 E+ SFP-12VI HW5 RJ45 Ports: 4x 10/100/1000 Mbps SFP Ports: 12x 100/1000 Mbps



iGigaSwitch 1606 HSR (18 ... 60V DC)

- 16 ports in total, 10x RJ45 and 6x SFP ports
- 2x SFP ports for Zero-Loss Redundancy (HSR/PRP)
- Optionally with integrated I/O module
- IEC 61850 compliancy is tested and certified by KEMA/DNV-GL
- Wide operating temperature range: -40 ... +85°C
- Wide input power range, 18 ... 60V DC

Reference	Description
88306406	iGigaSwitch 1606 HSR SFP-6VI RJ45 Ports: 10x 10/100/1000 Mbps SFP Ports: 6x 100/1000 Mbps



iGigaSwitch 1606 HSR (AC)

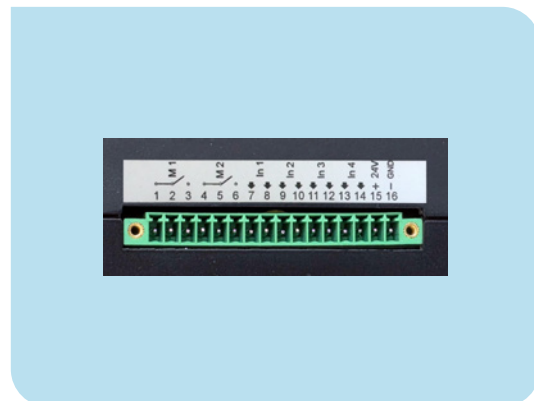
- 16 ports in total, 10x RJ45 and 6x SFP ports
- 2x SFP ports for Zero-Loss Redundancy (HSR/PRP)
- Optionally with integrated I/O module
- IEC 61850 compliancy is tested and certified by KEMA/DNV-GL
- Wide operating temperature range: -40 ... +70°C
- Wide input power range 90 ... 264V AC or 127 ... 370V DC

Reference	Description
88306476	iGigaSwitch 1606 HSR SFP-6VI AC HW5 RJ45 Ports: 10x 10/100/1000 Mbps SFP Ports: 6x 100/1000 Mbps



iOption I/O Digital 4xIn 2xOut 230V for iGigaSwitch 12xx and iGigaSwitch 16xx

Reference	Description
88301623	iOption I/O Digital 4xIn 2xOut 230V



iGigaSwitch 1002E+ MACsec

- 10 ports Gigabit Switch with 2 slots for SFP and 8 ports RJ45
- Up to 8 PoE+ ports with max. 240W power budget
- Support of MACsec feature
- Built-in I/O module with 2 input and 2 output ports
- Wide operating temperature range, -40 ... +85°C
- Wide input power ranges, 10,8 to 36V DC...or 18 to 60V DC

Reference	Description
88306452	iGigaSwitch 1002E+ MACsec SFP-2VI HW5
88306462	iGigaSwitch 1002E+ MACsec SFP-2VI 12/24V

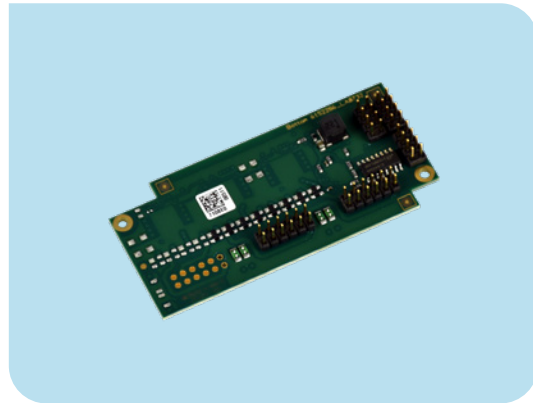


iGigaSwitch Accessories

iOption PoE+ or PoE++

The latest Power over Ethernet standard IEEE802.3bt enables the remote powering with up to 90 Watts per port. Equipment like Wireless LAN Access Points, IP-Cameras, Connected Lighting or Smart Building Systems can be supplied with power from the switch directly. The Power over Ethernet functionality can be parametered, controlled and monitored via management.

Reference	Description
88301602	iOption PoE+ 2/4P-30W
88301604	iOption PoE+ 6/8P-30W
88301606	iOption PoE+ 10/12P-30W
88301664	iOption PoE++ 2/4P-90W
88301666	iOption PoE++ 6/8P-90W



Memory Cards

Aginode memory cards have an integrated and unique MAC address that is taken over by the switch. The memory cards are used as backup location for the current switch configuration and firmware.

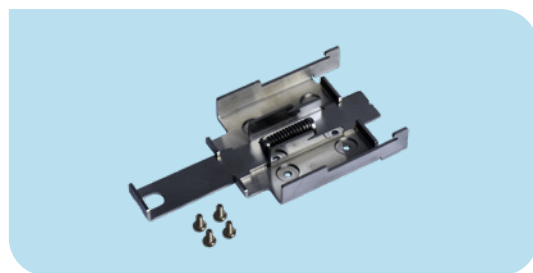
Reference	Description
88300692	SD Memory Card with MAC-Address Delivery: Separately in plastic case
88300696	SD Memory Card with MAC-Address plugged Delivery: Pre-installed in the switch



DIN-Rail Mounting Kit

The DIN-Rail Mounting Kit allows an easy installation of the iGigaSwitch on standard DIN-Rails. The clip is fixed on the backside of the switch.

Reference	Description
88300679	DIN-Rail mounting clip, stainless Colour: Unpainted, stainless-steel
88300681	DIN-Rail mounting clip, ALU Colour: Unpainted, Aluminium



Console Cable

The console port on Aginode switches allows access to the command line interface of the switch and can be used to configure the switch on site and/or to retrieve its status. Configuration via console port provides the same functionality as configuration via Telnet or SSH.

Reference	Description
88300716	RJ45 to USB Adapter for Serial Console Connector A: RJ45 Connector B: USB



iPowerSupply

The compact iPowerSupply perfectly complements Aginode Industrial Ethernet product portfolio. Due to the design, the wide-range inputs and the global approvals, the iPowerSupply is well suited for use in installations around the globe. The

iPowerSupplies comply with high requirements for EMC and environmental conditions which allows its operation in very harsh environments.

Reference	Description
88646181	iPowerSupply S 110-230VAC/24VDC 30W
88646182	iPowerSupply S 110-230VAC/48VDC 60W
88645960	iPowerSupply S 110-230VAC/48VDC 100W
88645963	iPowerSupply S 110-230VAC/24VDC 100W
88646250	iPowerSupply S 110-230VAC 48VDC 240W
88646072	iPowerSupply S 110-230VAC/48VDC 500W



LANactive accessories

SFP Modules

- Bidirectional transmission
- Duplex LC connector
- Class 1 or 2 Laser Safety Compliance
- Hot-swap pluggable
- Compliant with SFP MSA specification and SFF-8472
- Gigabit Ethernet
- Extended temperature range (industry standard), -40°C to +85°C
- Long range with single-mode optical fibre, up to 80 km
- Diagnostics and monitoring
- Threshold adjustment feature
- Diagnostic information in EEPROM
- Detailed product specification in EEPROM
- Predefined thresholds for warning messages



SFP Modules Fast Ethernet

Reference

88646380
88646010
88646011
88646012
88646013

Description

Aginode SFP 100 Transceiver GI(LC)E SGMII
Aginode SFP 100 Transceiver GI(LC)E
Aginode SFP 100 Transceiver SM(LC)E L10
Aginode SFP 100 Transceiver SM(LC)E L40
Aginode SFP 100 Transceiver SM(LC)E L80

Gigabit Ethernet

88646015
88646016
88646017
88646018
88646019
88646073
88646075
88646165
88646163
88646135
88646133
88645917
88646226

Aginode SFP 1000 Transceiver GI(LC)E
Aginode SFP 1000 Transceiver SM(LC)E L10
Aginode SFP 1000 Transceiver SM(LC)E L40
Aginode SFP 1000 Transceiver SM(LC)E L80
Aginode SFP 1000 Transceiver SM(LC)E L120
Aginode SFP 1000 Transceiver SF3(LC)E L10
Aginode SFP 1000 Transceiver SF5(LC)E L10
Aginode SFP 1000 Transceiver SF5(SC)E L40
Aginode SFP 1000 Transceiver SF3(SC)E L40
Aginode SFP 1000 Transceiver SF5(LC)E L40
Aginode SFP 1000 Transceiver SF3(LC)E L40
Aginode SFP 1000 Plugg. Transceiver 1000 Base T
Aginode TP SFP Transceiver 10/100/1000 Base-T

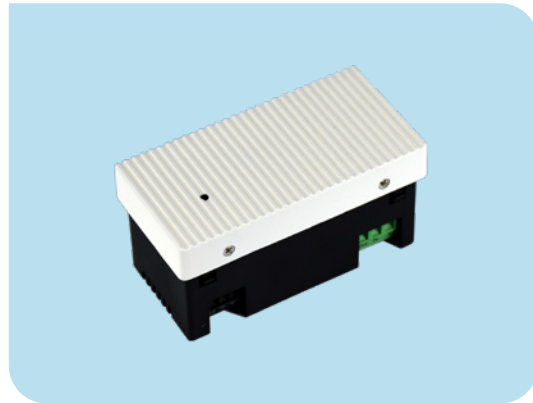
10Gigabit Ethernet

88646390
88646391
88646392
88646393
88646381

Aginode SFP+, 10G Base-SR, 850nm MM
Aginode SFP+, 10G Base-LR, 1310nm SM
Aginode SFP+, 10G Base-BX-U, 1270nm SM Bi
Aginode SFP+, 10G Base-BX-D, 1330nm SM Bi
Aginode SFP+, 10G Base-T, 30m RJ45

Click-In installations power supply

- 45 mm installation format, 90 x 45 mm/135 x 45 mm
- Compact and fanless system with metallic front panel
- Tool-free assembly
- Support for IEEE 802.3af and IEEE 802.3at, 54V DC
- Output power: 70 Watts/130 Watt
- Double-sided connection for functional earth (primary and secondary)
- Ambient temperature 0°C... 45°C (in operation)
- Function monitoring with control LED on the front
- Low Voltage Directive protection class II
- Versatile connection options and cable sets



Reference

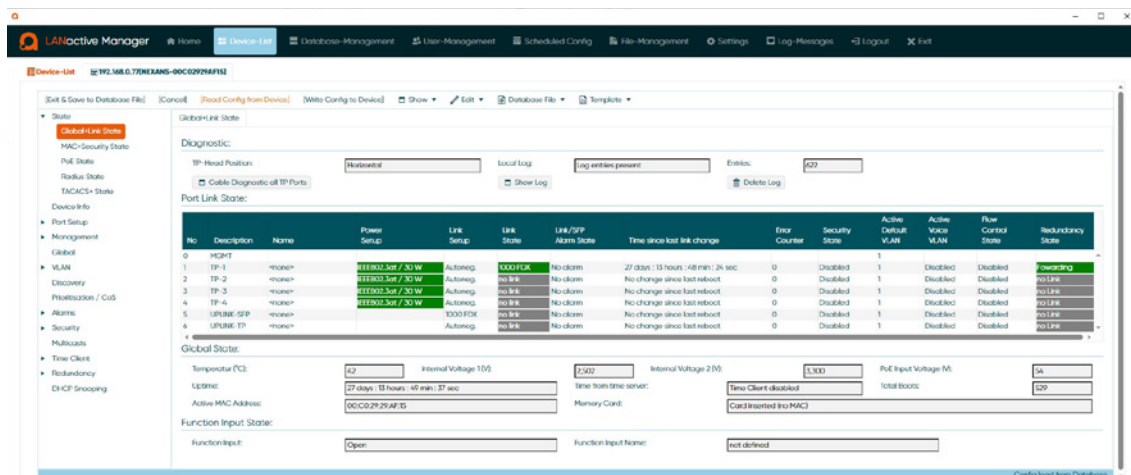
88646200
88646240
88646280
88646281
88646282

Description

Click-In Power Supply 54VDC/70W 90x45
Click-In Power Supply 54VDC/130W 135x45
Cable set pre-term 1m/1.5m open wires
Cable set pre-term 1m/1.5m-Wieland GST18
Cable set pre-term 1m/1.5m-Wago Winsta

LANactive Manager Software

LANactive Manager provides an easy, comfortable and secure solution for configuration, management and supervision of Aginode LANactive switches.



All LANactive switches (FTTO, DICE and Industry) can be managed via LANactive Manager.

Accurate view with intelligent device lists

Categories can be defined according to a tree structure, and devices can be assigned using Drag & Drop. Any number of device lists can be created, arranged in different groups, sorted by IP address, MAC address, device name and software version, or imported from environments such as XML, CSV or from a database. Counting and labelling according to category are also possible, along with various viewing options and creation of Excel or XML inventory lists. The device list is automatically updated through polling and changes are highlighted.

Software Packages

LANactive Manager is available as a standalone version and used as a desktop application for single or multiple users. This installation is perfect for on-site network engineers who are connected locally.

LANactive Manager Client-Controller

LANactive Manager Client-Controller is a client-controller software architecture that is optimised for large installations with hundreds or thousands of switches. It allows simultaneous access from different clients via client software or web interface and supports the fully automated configuration process Zero-Touch Configuration.

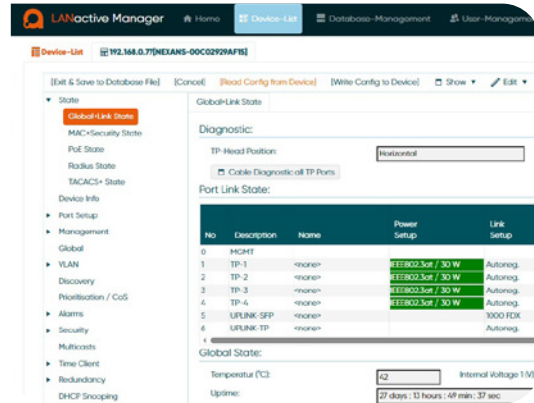
The LANactive Manager Client-Controller is available for Windows and Linux operating systems.

Zero-Touch Configuration

Aginode LANactive Zero-Touch Configuration is a contemporary way of designing, building and operating networks with minimum effort. The use of LANactive Manager together with LANactive switches ensures networks are flexible and scalable.

LANactive Manager

- Stand-Alone version and Client-Controller version
- Zero-Touch Configuration
- Extended management for firmware and configuration changes
- Different access levels, roles and user specified device lists
- Logging and alarming functionality
- Free of charge evaluation version



Reference	Description
88643008	LANactive Manager Controller Licence
88643009	LANactive Manager Controller extension 500
88643010	LANactive Manager Controller extension 1000
88643011	LANactive Manager Controller extension 2000
88643012	LANactive Manager Controller licence fee 500
88643013	LANactive Manager Controller licence fee 1000
88643014	LANactive Manager Controller licence fee 2000
88643015	LANactive Manager Stand Alone Licence
88643016	LANactive Manager Stand Alone extension 100
88643017	LANactive Manager Stand Alone extension 200
88643018	LANactive Manager Stand Alone licence fee 100
88643019	LANactive Manager Stand Alone licence fee 200

Training, Support & Warranty





Training

In order to provide end users with maximum confidence, Aginode ENGAGE and Certified Solution Partners (CSP) must pass training to ensure they are competent to install LANmark solutions to the required standard and are able to offer the full Certified Solution Warranty.

e-Learning

The LAN Academy is an e-Learning platform which aims to improve access to training, especially for installation partners wishing to become Aginode ENGAGE or Certified Solution Partners (CSP's).

Full Copper and Fibre Supervisor training sessions are available to obtain a LANmark Certified Supervisor/Installer Certificate.

For those installers who need to renew their certificate after two years, we have the Copper and Fibre update session. Sessions are available in both English and French.

Sessions Overview

- LAN Cabling Fundamentals and Products
- Copper Supervisor (Site & Design)
- Copper Supervisor (Site & Design) and Expert Fibre
- Certified Installer Copper and Fibre Update Training
- Superviseur Cuivre (Site & Design) et Expert Fibre
- Programme de remise à niveau pour les partenaires certifiés

In-class Training

In-class Training is given at the Competence Centre near Brussels, as well as on demand at your premises worldwide or in our Training centres in different regions by our Certified Trainers in local languages.

Courses are typically based on the following formats although training may vary slightly by country depending on local requirements and needs. These programmes are all based on standardised Training Modules to ensure consistency of standards around the globe.

Training Modules Overview

- Module 1 Premises Cabling Standards and Design *
- Module 2 Testing Copper Cabling Systems *
- Module 3 Aginode LANmark Copper Cabling Solutions *
- Module 4 Installation Rules and Guidelines *
- Module 5 Installation Practice & Testing Class E-EA Links *
- Module 6 Installation Practice GG45 & Testing Class F-FA Links
- Module 7 Optical Fibre Theory and Principles *
- Module 8 Aginode LANmark Optical Fibre Cabling Solutions *
- Module 9 Testing Optical Fibre Links *
- Module 10 Fibre To The Office Cabling System Design (FTTO)

* Module part of the 3 Day Copper Supervisor and Fibre Expert Training Program

To make this "level training" program possible, the training has been divided into modules which are all addressing specific topics. A tailored training is also possible to address the needs for different trainee profiles.

Contact us to get details of training courses in your region: info@aginode.net

Warranty

Fully Comprehensive or Self Certification options

Link Warranty

On-line Self Certification

Aginode provide a unique 25-year self-certification link warranty for standard Cat 6 and Cat 6A installations which is available for all installers.

- Instant - no waiting while application is processed
- Customised - certificate includes details of end customer and installer
- Easy - simply complete the short online form, generate and print the pdf certificate

Certified Solution Warranty

Complete confidence

Aginode Certified Solution Warranty is the most comprehensive guarantee on the market covering:

- Copper and Fibre
- Channel Performance - Horizontal, Campus and Backbone
- Application support
- Labour*

* Aginode take liability for Labour when installation is made by a full ENGAGE or Certified Solution Partner

What is included	Link Warranty Certificate	Certified Solution Warranty
Brands covered:		
LANmark	✓	✓
Essential	✓	-
Copper categories covered:		
Cat 6	✓	✓
Cat 6A	✓	✓
Cat 7A	-	✓
Fibre OM3/OM4/OM5/SM	-	✓
Parts	✓	✓
Link performance	✓	✓
Full end-to-end channel	-	✓*
Application guarantee	-	✓*
Extended distance support	-	✓*
Installation liability	-	✓**
Aginode Checked & Validated	-	✓
Validity	25 years	25 years

* With Aginode patch cords

** When installed by ENGAGE or Certified Solutions Partner

Support

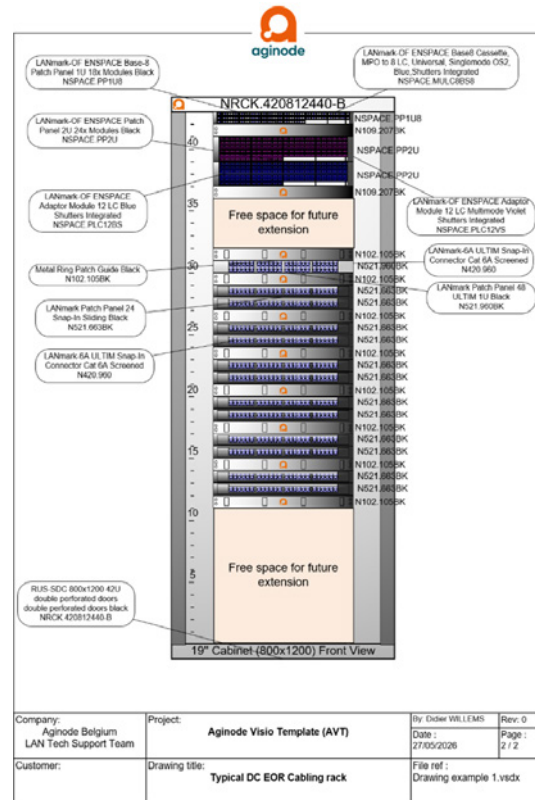
Aginode Visio Template 5.0 (AVT) Software

Aginode Visio Template 5.0 (AVT 5.0) is a free software tool designed to simplify and accelerate the creation of professional network infrastructure diagrams, rack layouts, and 3D cabling schematics using Microsoft Visio.

Developed for system designers, installers, consultants, and integrators, AVT 5.0 provides intelligent diagramming features, updated Aginode product libraries, and advanced export capabilities to improve productivity and documentation quality.

Features:

- Updated Product Libraries**
 AVT 5.0 includes fully updated Visio stencils covering the latest Aginode product portfolio.
- Intelligent Design Tools**
 Enhanced diagramming capabilities to streamline project creation and management.
- Improved Project Documentation**
 Product Selector for easy product navigation and identification, integrated Document Explorer and Advanced Bill of Materials Export.
- Direct Access to Product Information**
 All relevant shapes include hyperlinks to product datasheets available on the Aginode website.
- Easy to Use**
 Comprehensive help file for rapid onboarding for new users and broad compatibility with other tools and workflows.



Benefits:

- Accelerate network infrastructure design
- Reduce manual configuration work
- Improve design consistency and accuracy
- Generate professional documentation faster
- Create comprehensive rack layouts and cabling schematics
- Deliver higher-quality project documentation to customers

Aginode Visio Template 5.0 is available as a free download for Microsoft Visio users.

Support LANactive

Reference	Description
88642005	Hardware Replacement Service
88642010	Support-Package "Engage" - Third Level Support
88642011	Support-Package "Getting Started" - Third Level Support
88643001	Enhanced Network Management Training

Installer programs

ENGAGE

'Engage' is Aginode's commitment to assist at every step of building an agile IT infrastructure: from planning, defining, designing to deploying and using the network.

Our Engage partners are our premier tier, exclusively selected to help deliver this commitment to our final clients.

Certified Solution Partner (CSP)

CSP's are fully approved and validated by Aginode and are qualified to offer the fully comprehensive Certified Solutions Warranty.

Registered Installer (RI)

Available to all applicants, RI's benefit from latest updates and can offer the self-certified online Link Warranty.

#smartconnection

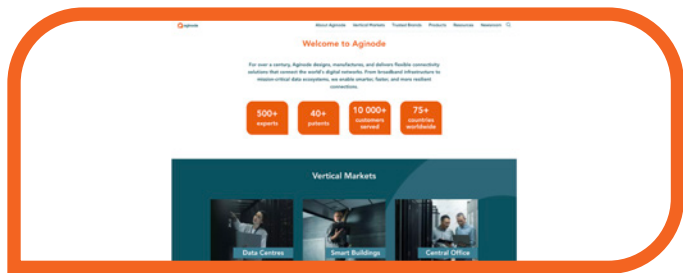


Learn more on **YouTube**

Connect via **LinkedIn**



Visit **www.aginode.net**



Contact us via
info@aginode.net

www.aginode.net

