

UK Mounting Hardware for LANmark

LANMARK UK STYLE ANGLED LJ6C MODULE 1 KEYSTONE WHITE

Aginode Ref: N424.320K

- 25 x 38 mm overall dimensions
- Fits standard LJ6C cut-outs
- Designed for LANmark Cat6A UTP Keystone connectors
- Also can support LANmark Snap-In connectors
- Equipped with spring shutter
- Labelling area
- Colour white
- Polished finish
- Angled design

Application

This module can accommodate one LANmark 6a UTP Keystone connector and is designed to be used in mounting plates with standard LJ6C cut-outs, such as those commonly found in UK style floor boxes.

The LANmark Snap-In connectors can be easily fitted into the module by using blue Keystone Clips(N429.626).

Due to its angled design, the module provides a real depth benefit behind the connector and ensures that the minimum bend radius of the cable is maintained. Especially when installing high performance cables, such as Category 6A and Category 7/7A, using an angled module is highly recommended.

The module has 25 x 38 mm overall dimensions and has clips to fit into standard LJ6C cut-outs.

Design

The LANmark LJ6C Keystone module is equipped with a white spring shutter .

The module is supplied in white with a polished finish. The material is PC/ABS and is UL 94V-0 rated and both RoHS and REACH compliant.

Installation

All drawings, designs, specifications, plans and particulars of weights, size and dimensions contained in the technical or commercial documentation of Aginode is indicative only and shall not be binding on Aginode or be treated as constituting a representation on the part of Aginode.



STANDARDS

ISO/IEC 11801

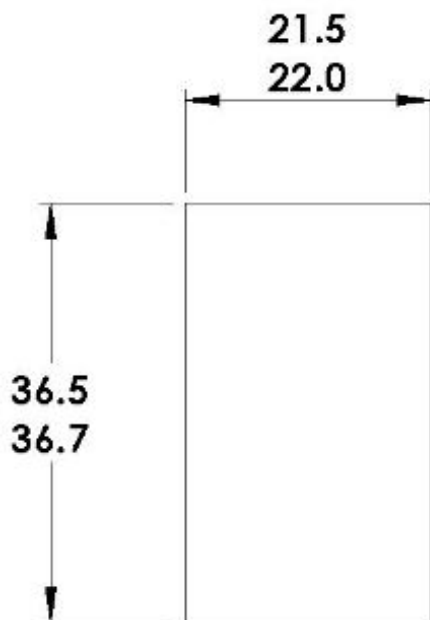
LANmark Keystone 6a UTP connectors can easily be inserted in the aperture with a one-click operation.

The LANmark Snap-In connectors can be easily fitted into the module by using blue Keystone Clips(N429.626).

The module can be simply clicked in to a mounting plate, without the need for tools.

Cut-out dimensions LJ6C

PANEL CUT-OUT DIMENSIONS FOR LJ6C MODULES PANEL THICKNESS 1.25-2.20



ALL DIMENSIONS IN mm