

Waterfall & Accessories

FIBREROUTE WATERFALL ASSEMBLY-120MM

Aginode Ref: N350.003SD04A

Aginode Fibre Trunking System provides a dedicated pathway for fibre optic cables and cords to protect them from accidental damage. The system offers a flexible, high-capacity solution for data centre containment which is easy to install and reconfigure to meet future needs.

The 120mm waterfall can fit with both 50mm tube and 90mm tube. An fitting hardware for 90mm tube is available and can be ordered separated as N350.003SD91A.

- Pathway system designed for accommodation of data centre fibre cables
- Free of sharp edges
- Quick connect system with a wide range of fixtures and fittings
- High capacity pathway accommodating large volumes of cables with space for future expansion
- Waterfall Assembly to provide transition from Channel to racks or cabinets
- Tough, flame retardant ABS material

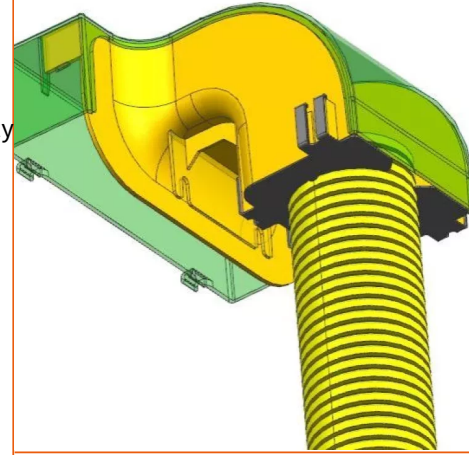
The rigid channel with matching cover protects fibre optic cables from damage.

All components of the system are made of tough, fire retardant materials.

The system components have a smooth inner surface to ensure a safe path for fibre optic cables and feature internal radius management to facilitate the maintenance of bend radii for cables and patch cords.

The Waterfall Assembly provides an exit for fibre optic cables or cords from the channel into racks or cabinets. The split plastic flex tube is attached to the Waterfall for easy access to the fibre optic cables.

The Waterfall is secured to the channel using T-type screws.



STANDARDS

EN 50173-5
ISO/IEC 24764
UL 94 V0

FIBREROUTE Waterfall Assembly-120mm

Characteristics

Construction characteristics

Colour	Yellow
Material	ABS

Dimensional characteristics

Approximate net weight	0.7 kg
------------------------	--------

Usage characteristics

Operating temperature, range	-25...60 °C
Storage temperature, range	-20...60 °C

Documentation

Waterfall60.xls xls — 16 KB [Download](#) ↓