

LANmark-6A Field Terminable Plug

LANMARK-6A FIELD TERMINABLE PLUG CATEGORY 6A SCREENED APAC

Aginode Ref: N490.001S

- Field installable Cat 6A plug for MPTL connections
- For solid wire cable AWG26-AWG23
- Accepts cable diameters from 6.0 to 8.5mm
- 360° shielding offering Alien Crosstalk immunity
- Toolless termination enabling fast and easy installation
- Wiring according to colour code T568B and T568A
- Supports all Class EA applications
- Supports PoE applications

Application

Aginode LANmark-6A Field Terminable Plug is designed to build Modular Plug Terminated Links (MPTL) as specified in the TIA 568-2.D standard.

In conjunction with LANmark-6A infrastructure cable and the LANmark-6A Snap-In connector configured in MPT links, the plug will support all Class EA applications, including 10GBase-T and Power over Ethernet up to 100W.

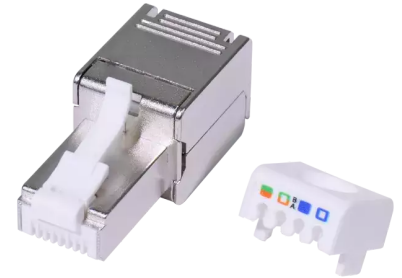
MPTL are increasingly being used for direct data connections between patch panels and network devices, such as Wireless Access Points and IP Cameras, which are usually located in or near the ceiling void and often powered over the network via PoE.

Design

The plug is fully shielded, offering excellent immunity against Alien Crosstalk and Electromagnetic Interferences.

1.27 micron (50 microinch) gold plated front contacts offer superior mechanical durability, ensuring at least 2500 plug insertion cycles and supporting Power over Ethernet transmission up to 90W without degrading effect.

Performance



STANDARDS

ANSI/TIA 568.2-D
EN 50173-1
IEC 60603-7-51
IEEE 802.3af (PoE)
IEEE 802.3bt (PoE++)
IEEE 802.3at (PoE+)
ISO/IEC 11801

All drawings, designs, specifications, plans and particulars of weights, size and dimensions contained in the technical or commercial documentation of Aginode is indicative only and shall not be binding on Aginode or be treated as constituting a representation on the part of Aginode.

The LANmark-6A Field Terminable Plug meets or exceeds the requirements for Category 6A connecting hardware as described in ISO/IEC 11801, IEC 60603-7-51 and TIA 568.2-D. In conjunction with LANmark-6A cable, the plug supports MPTL configurations as specified in TIA 568.2-D.

Installation

The LANmark-6A Field Terminable Plug is a one-piece design, with a wire organiser as sole accessory, guaranteeing infallible management of the twisted pairs.

Simply closing the connector top and bottom covers ensure fast and effortless IDC termination without the need for any tools.

The installation finishes with laying the cable drain wire in its place.

Guarantees

Installations with LANmark-6A cable and connectivity including the LANmark-6A Field Terminable Plug can qualify for a 25 year full system warranty, which includes Parts, Installation, Channel Performance and Application Support, as described in the Aginode Certified System Warranty.

LANmark-6A Field Terminable Plug Category 6A Screened APAC

Characteristics

Construction characteristics

Connector type	RJ 45 shielded
Material	Zinc alloy

Dimensional characteristics

Height	18 mm
Length	41.2 mm
Width	15 mm

Usage characteristics

Category	Cat. 6A
IP Rating	IP20
Mechanical durability/matings	2500
Operating temperature, range	-20...60 °C
Range	LANmark-6A

Documentation

Installation instructions LM6A Field Term Plug APAC REV01.pdf pdf — 299.51 KB [Download](#) 