

XPLORER™

XPLORER™ BACK STORAGE MODULE

Aginode Ref: 10278809

- Elementary fixed chassis
- 19" or ETSI fixation kits
- 6 distinct swivelling zones for identification of incoming fibres
- Single reference for left or right opening versions

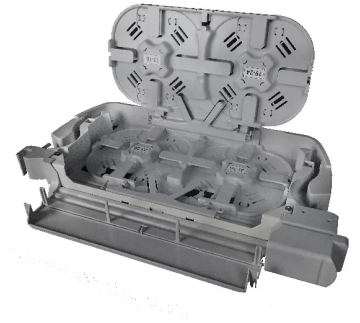
XPLORER™ storage module is a swivelling shelf manufactured with thermoplastic materials. The storage function is ensured by six swivelling distinct zones with a large capacity for the storage of microbundles, loosetubes or patchcords from the back.

It is composed of the following subparts:

- Swiveling optical chassis with two coiling areas,
- Fixed chassis equipped with one metallic comb for Ø5mm tubes,
- Standard fixation kit for 19" frames 9.5mm squares.
- ETSI 8.3mm squares fixation kit.

The accessories fitted with the shelf (ring, drums) guarantee the compliance with the bending radius of the fibres (30mm).

The XPLORER™ storage module is delivered with a new fixation system. It remains compatible with cage-nuts fixation systems.



STANDARDS

IEC 61753-1

XPLORER™ Back storage module

Characteristics

Construction characteristics

Colour	Light grey RAL 7035
Cabinet format	19"/ETSI
Material	Thermoplastic






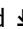
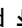

Dimensional characteristics

Depth	185 mm
Cable Diameter, range	5...19 mm
Heightunit	1 U

Usage characteristics

Operating temperature, range	-40...75 °C
Fire retardant	UL94-V0
Minimum static operating bending radius	30 mm
Chemical resistance	Hydrocarbons resistant
Function	Storage
U.V resistance	Yes

Documentation

- [XPLORER 1U installation manual - Splice and patch pdf — 5.69 MB](#) Download 
- [XPLORER 1U installation manual - Splitter pdf — 5.45 MB](#) Download 
- [XPLORER 1U installation manual - Patching pdf — 3.72 MB](#) Download 
- [XPLORER 1U installation manual - Storage pdf — 6.21 MB](#) Download 
- [XPLORER 3U installation manual - Splitter pdf — 6.86 MB](#) Download 
- [XPLORER 4U installation manual - Patching pdf — 15.49 MB](#) Download 
- [XPLORER 4U installation manual - Splice and patch pdf — 17.55 MB](#) Download 
- [XPLORER 4U installation manual - Splice and patch - 3 large splice cassettes pdf — 4.48 MB](#) Download 
- [XPLORER 1U installation manual - Splice, patch and splitter pdf — 7.1 MB](#) Download 
- [Eco-design at Aginode - FTTH case study pdf — 1.49 MB](#) Download 

All drawings, designs, specifications, plans and particulars of weights, size and dimensions contained in the technical or commercial documentation of Aginode is indicative only and shall not be binding on Aginode or be treated as constituting a representation on the part of Aginode.

Selling & delivery Information

Delivery units - 1U : 72 units per palet - 3U and 4U : 20 units per palet

All drawings, designs, specifications, plans and particulars of weights, size and dimensions contained in the technical or commercial documentation of Aginode is indicative only and shall not be binding on Aginode or be treated as constituting a representation on the part of Aginode.