

# OUTDROP 2+

OUTDROP 2+ 72 OF FOR G657A2 FIBRE, HORIZONTAL AND PROTECTED BY 1/4 TURN

**Aginode Ref:** 10268776

OUTDROP 2+ equipped with 2 cassettes 36OF specific for G657A2 fibre

The OUTDROP box is designed for aerial deployment of subscriber cables. It is equipped with a removable cover to facilitate access to the fibers during installation and can also be secured by 1/4 turn button. The aerial box is intended for mounting on pole or on facade.

Its organizer tray, compatible with microbundles and loose cables, has anchoring areas for clamping the cables and a central drum for absorbing fiber overlenghts.

## Fibre management

The fibres are managed by spicing cassettes. The cassettes are articulated allowing quick and easy access to the splices.

The box is configurable accepting different versions of cassettes and organizer with a maximum capacity of 72 splices. All cassettes have 2 slots for splitters.

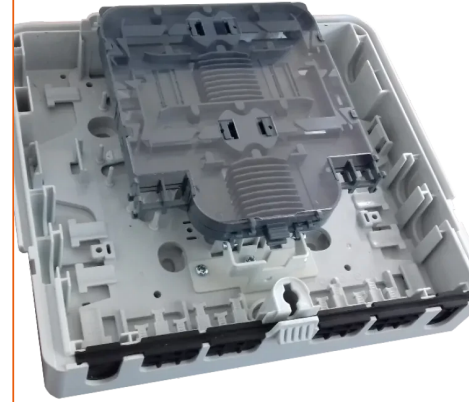
The SFM organizer and cassettes allows the management of bare fiber with distinction between connected fibers, in transit or on hold.

In its patching version, it is limited to 24 splices and 16 SC adapters.

## Cabling configurations

The product is compatible for the use of a mid-span cable (butt or straight mid-span) thanks to its 2 lateral ports (optional). Tight straight mid-span (or extraction) is also possible.

The ports with rubber seals guarantee the protection rating for external use (IP55). They accept cable diameters up to 14mm and up to 12 drop cables from a maximum diameter of 6mm.



## STANDARDS

Aginode specification

## FURTHER INFORMATIONS

All drawings, designs, specifications, plans and particulars of weights, size and dimensions contained in the technical or commercial documentation of Aginode is indicative only and shall not be binding on Aginode or be treated as constituting a representation on the part of Aginode.

2 lateral ports giving the possibly of a straight mid span  
cabling

Locked by 1/4 turn

Product compatible only with G657 fiber

# OUTDROP 2+ 72 OF for G657A2 fibre, horizontal and protected by 1/4 turn

## Characteristics

### Construction characteristics

Colour	Light grey RAL 7035
Material	Polycarbonate

### Dimensional characteristics

Height	78 mm
Width	236 mm
Length	247 mm
Max. number of cassettes	2
Splice number	72
Number of branched cables	12
Diameter main cable	4...14 mm
Diameter branch cable	4...6 mm

### Mechanical characteristics


IK Rating	9
-----------	---

### Usage characteristics

Operating temperature, range	-40...65 °C
Midspan	Yes
Minimum static operating bending radius	15 mm
Locking system	Triangle
U.V resistance	Yes
Packaging	Box
Installation type	Aerial Cable
RoHS compliant	Yes
Watertightness	IP 55

## Documentation

All drawings, designs, specifications, plans and particulars of weights, size and dimensions contained in the technical or commercial documentation of Aginode is indicative only and shall not be binding on Aginode or be treated as constituting a representation on the part of Aginode.

OUTDROP splicing 72OF for G657 - instructions (FR/EN) pdf — 1.36 MB Download 

*All drawings, designs, specifications, plans and particulars of weights, size and dimensions contained in the technical or commercial documentation of Aginode is indicative only and shall not be binding on Aginode or be treated as constituting a representation on the part of Aginode.*