

TOCB

The 12/48 fibre cable-end jumpering module is used to organise frontal jumpering of optical leads. It is the final transmission element before the electronic equipment. This sub-rack module is designed to fit standard frames and features a chassis constructed from 1.5 mm thick sheet metal. This subrack can so be easily integrated in frames fitted with the active equipment to interconnect them or onto the passive optical distribution frame.

Function

By grouping the two function together, the combined splicing patching module is used to connect maximum 24 fibres (1U subrack) or 48 fibres (2U subrack) cables while still retaining operational convenience (patch panel available for all types of existing connectors).

The proximity of the two functions also results in a reduction of pigtailed lengths. With a second module, it's possible to add a coiling function for the patchcords.

Design

The combined function module includes a space reserved for splicing of the incoming tubed fibres, as well as a frontal space devoted to patching.

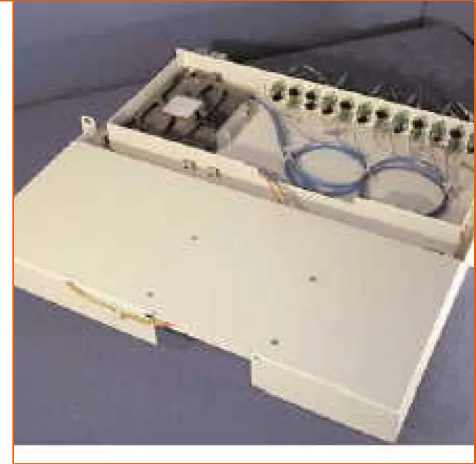
Splicing is performed with conventional cassettes.

Patching function is effected on panels which can be pre-equipped or not with adaptors to allow the connection of the optical fibres.

Each shelf-unit can have up to 24 or 48 adaptors. The module is compatible with the different formats on the market, e.g. 19" or ETSI.

Cables enter at the rear of the rack. Cables are attached directly to the subrack or to the frame. The design of this subrack makes it possible to use the various existing cable structures (indoor or outdoor cabling, slotted core or tube structure, monomode or multimode fibres, unitary or ribbon structure, etc ...).

The module is made up of the following :



- a fixed part which is attached to the frame,
- a plate mounted on slides,
- a location for one to four splicing cassettes (12 splices each),
- a device for storing excess lengths of pigtailed.

This subrack also comes in a version that is equipped for the management of excess lengths of jumpers. In this case, it is combined with a jumper storage module which is fixed underneath the movable part of the rack.

Some of the references we provide can also be equipped with additional anti-rodent kit.

TOCB

CHARACTERISTICS

Construction characteristics

Cabinet format	19"
Colour	Beige
Material	Steel painted

Dimensional characteristics

Depth	220 mm
-------	--------

Usage characteristics

Packaging	Box
-----------	-----

All drawings, designs, specifications, plans and particulars of weights, size and dimensions contained in the technical or commercial documentation of Aginode is indicative only and shall not be binding on Aginode or be treated as constituting a representation on the part of Aginode.

Product list

Aginode ref.	Country ref.	Name
10216865	-	TOCB 24FO 1U 24xSC/APC

☎ = Make to order, 📦 = In Stock

All drawings, designs, specifications, plans and particulars of weights, size and dimensions contained in the technical or commercial documentation of Aginode is indicative only and shall not be binding on Aginode or be treated as constituting a representation on the part of Aginode.