

LANsense NGA Copper Patch Panels

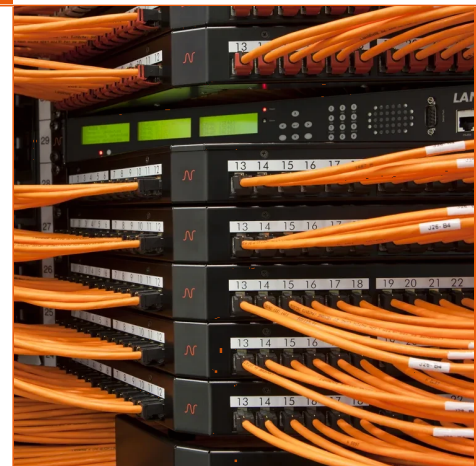
- LANsense Intelligent Patch Panels
- Modular 24 Ports Snap-In patch panel
- Compatible with LANmark EVO connectivity.
- LANmark EVO modular connectors sold separately
- Earthing and grounding features with Aginode exclusive design
- Compatible with Cat 6, Cat 6A, Cat 7A connectors

LANsense copper patch panels carry on-board intelligence, which remains dormant until enabled by LANsense analysers and software.

The panels have in-built sensors to detect the connection status of each port and an I/O connector to link to the analysers.

Manufactured from steel, the panel provides a robust, high-density mounting mechanism for Aginode modular connectors.







The panel is available in 1U size


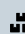


STANDARDS

ISO/IEC 11801

Product list

	Aginode ref.	Country ref.	Name
	N881.675	-	LANsense Angled Panel 24 Snap-In White
	N881.3112P	-	LANsense Interconnect Modular Snap-In Patch Panel
	N881.411	-	LANsense Empty Sliding Patch Panel for 24 Snap-In connectors, Black
	N881.311	-	LANsense Panel 24 Snap-In Black
	N881.671	-	LANsense Angled Panel 24 Snap-In Black
	NLS3.CU24B	-	LANsense TGA Copper Patch Panel

 = Make to order,  = In Stock

All drawings, designs, specifications, plans and particulars of weights, size and dimensions contained in the technical or commercial documentation of Aginode is indicative only and shall not be binding on Aginode or be treated as constituting a representation on the part of Aginode.