

# LANmark-OF ENSPACE LC/LC Pre-Term

- Factory terminated LC fibre assembly
- ENSPACE Pre-Term for installation in LANmark-OF Patch Panel
- Fibre count: 12F, 24F, 48F and 96F
- Fibre type: OM4, OM5 and singlemode (OS2)
- Small cable diameter reduces required data centre space

The assembly consists of a Micro-Bundle cable terminated with LC connectors on each side in a factory.

## Pre-Term for data centres, buildings and campus based on Micro-Bundle

The cable has a small diameter and bend radius to meet data centre requirements. It can be used in buildings.

## Fire performance

The cables meet the requirements for flame non-propagation (IEC 60332-1) and fire non-propagation (IEC 60332-3).

## Pre-Term characteristics

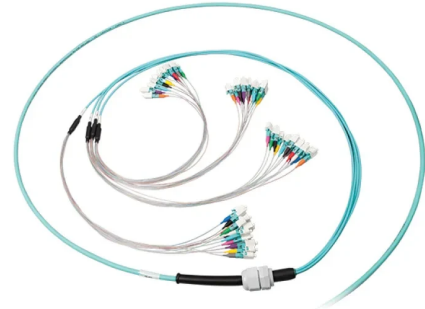
The Pre-Term has a dual stage fan-out design.

The first fan-out point is between the cable and the legs of the fan-out. Each leg of the fan-out contains 1 Micro-Bundle with 12 fibres inside. This fan-out has been reinforced with aramid yarns with 3.0mm diameter.

The second fan-out distributes the reinforced Micro-Bundle into 12 fibers with 2.0mm diameter.

The connectors have coloured boots for identification in compliance with the TIA/EIA standard.

The fan-out is protected with a bubble foam for protection during transport and installation. Every bundle of 12 connectors has an additional individual protection to avoid mixing them up with other connectors.



## STANDARDS

ISO/IEC 11801

A pulling eye system is positioned at both side of the Pre-Term to facilitate the installation. This pulling eye is connected to the internal strength element of the cable. The maximum pulling force on the pulling eye is 450N.

The LC/LC Pre-Terms come with a PG-13 cable gland that fits into the LANmark-OF patch panel slots.

In order to reduce overlengths in data centers the Pre-Terms are custom made and available with 1m increments. The "xxx" in the N-number is the length in metre between the cable glands, i.e. the Pre-Term length between the rear of the patch panels.

The typical value for the insertion loss for the low loss LC/LC connection is 0,15 dB. The limit value is 0,25 dB measured according to standard IEC61300-3-4. The minimum return loss is measured according to standard IEC 61300-3-6. For a multimode LC connection the RL is 30 dB, for a singlemode LC connection it is 45 dB and for a LC/APC connection it is 55 dB.

All LANmark-OF Pre-term assemblies are fully terminated and tested in a quality assured factory environment.

# LANmark-OF ENSPACE LC/LC Pre-Term

## CHARACTERISTICS

*All drawings, designs, specifications, plans and particulars of weights, size and dimensions contained in the technical or commercial documentation of Aginode is indicative only and shall not be binding on Aginode or be treated as constituting a representation on the part of Aginode.*

*All drawings, designs, specifications, plans and particulars of weights, size and dimensions contained in the technical or commercial documentation of Aginode is indicative only and shall not be binding on Aginode or be treated as constituting a representation on the part of Aginode.*