

Patch Guides, Blank Panels & Cable Management

- Patch guides to manage and store all patch cords.
- 1 HU and 2 HU for high density.
- 1 HU with rings for easy access.
- Cable guide for all patch panels without clip-on.

For a correctly managed installation, Aginode offers a full range of cable management accessories to complement our patch panel and cabinet range. The range is suitable for all Aginode Copper and Optical patch panels.

The new offering is Aginode branded to blend with other Aginode products used in a cabinet.

The cable management range is designed for all 19" cabinets. The range includes patch guides and cable guides.

Patch Guides

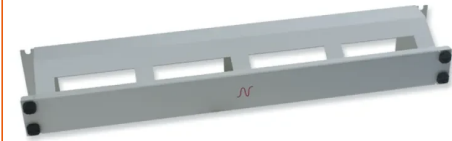
The Aginode patch guide range enables orderly patch cord storage. All the Aginode accessories are guaranteed to maintain the required bending radius for patch cords which in turn ensures superior data transmission for the installation. The paint finished metal accessories provide improved stability over plastic guides on the market.

The 1HU and 2HU universal patch guides are delivered with a front plate. The 8 cm depth provides for the bending radius and enough storage space for the patch cords. Two openings designed at the rear face improve the storage and entry possibilities for patch cords.

An alternative 1 HU 5- ring metal patch guide is offered. This accessory similarly allows for orderly patch cord management in any installation.

Cable Guide

The Aginode cable guide offers fast and reliable cable retention and grounding. The clip-on system is a proprietary Aginode design and improves the flexibility, solidity and the grounding of your installation.



STANDARDS

ISO/IEC 11801

Patch Guides, Blank Panels & Cable Management

CHARACTERISTICS








Construction characteristics



Colour

White RAL 9002

All drawings, designs, specifications, plans and particulars of weights, size and dimensions contained in the technical or commercial documentation of Aginode is indicative only and shall not be binding on Aginode or be treated as constituting a representation on the part of Aginode.

Product list

	Aginode ref.	Country ref.	Name	Colour
	N102.127	-	2U Universal Patch Guide, White	White RAL 9002
	N102.105	-	1U Patch Guide with rings, White	White RAL 9002
	N424.512	-	Cable management plate for Essential Rear Connect Panels N424.xxx	Black
	N102.105BK	-	1U Patch Guide with rings, Black	Black
	N102.117BK	-	1U Universal Patch Guide with front cover, Black	Black
	N102.127BK	-	2U Universal Patch Guide, Black	Black
	N109.207BK	-	1U Blank Panel, black	Black
	N102.117	-	1U Universal Patch Guide with front cover, White	White

 = Make to order,  = In Stock

All drawings, designs, specifications, plans and particulars of weights, size and dimensions contained in the technical or commercial documentation of Aginode is indicative only and shall not be binding on Aginode or be treated as constituting a representation on the part of Aginode.