

# LANmark-OF Plug&Play Adapter Plates

## LANMARK-OF ADAPTOR PLATE 24 LC MULTIMODE VIOLET

**Aginode Ref:** N205.ALC24MMV

- Adapter plates for 3DSC, 6DSC, 6DLC or 12DLC
- Available in multimode and singlemode
- Module can be easily mounted into Aginode' Plug&Play patch panel
- High density: 4 modules fit into 1U

### Application

The adaptor plates are designed for a fast installation inside the Aginode Plug&Play panels. They allow a wide range of connectivity options. A mix of different adaptor types and a combination of singlemode and multimode within the same panel is possible.

### Compatibility

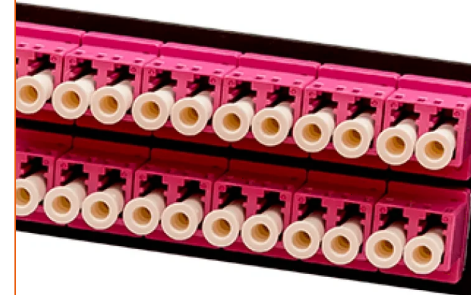
The adapter plates are installed in the LANmark-OF Plug&Play Patch panels (N439.3MPP). Up to 4 adapters plates can be installed into one patch panel.

### Adapter plate versions.

The adapter plates are available with a density of 3DSC, 6DSC, 6DLC or 12DLC. This results in a medium density of 48SC/48LC or a high density of 96 LC in one patch panel.

The adapter plates are available for multimode and singlemode.

Blank adapter plates reserve fibre space for future use.



### STANDARDS

ISO/IEC 11801

# LANmark-OF Adaptor Plate 24 LC Multimode Violet

## Characteristics

### 구조적 특성

|                  |       |
|------------------|-------|
| 색상               | 자색    |
| Fiber optic type | 멀티 모드 |
| Connector type   | LC    |