

Splicing Patching / POB 24-36-48

POB 48 RIGHT AXIS ELEMENTARY VERSION PRE-EQUIPPED WITH 48 LC

Aginode Ref: 10272021

POB 48 right axis elementary version pre-equipped with 48 LC

- Swivelling module for 19" or ETSI frames
- Full access to the back of the frame
- Combined functions: splicing and patching
- 24 LC/UPC dual adaptors
- 48 LC/UPC pigtails
- A KINOPTIC™ product

Application

The POB 48 1U is a module with combined splicing and patching functions. It is used to connect up to 48 fibres. On the terminal part of FTTH network, it is the transition element towards active equipment. The module is installed either in Central Office or in FTTH nodes. It can also be used as a distribution module.

Description

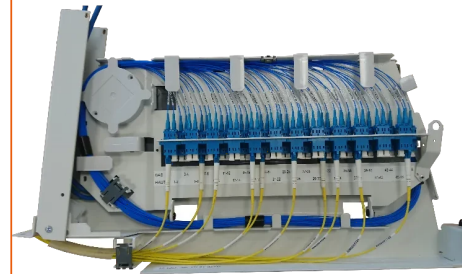
The POB 48 1U module includes a space reserved for splicing of the incoming fibres. Splicing is performed in splicing trays. A panel ensures the patching functions with a capacity of up to 48 connection points (LC).

The module is compatible with all type of frames (19" or ETSI standards) with a minimum depth 300mm. This is an elementary versions.

The accessories fitted with the module guarantee the conformity with the bending radius of the fibres (G652). It is prepared in order to minimise the installation time on sites where it is deployed.

The module is composed of the following subparts:

- Fixed chassis attached to the rack (19" or ETSI)
- Swivelling chassis (left or right versions are available) including a patch panel with alphanumeric identifier for the adaptors,
- Pivoting support to access the splice trays
- Device for lateral management of optical jumpers harnesses,
- A primary fan-out device (in option).



STANDARDS

Aginode specification

All drawings, designs, specifications, plans and particulars of weights, size and dimensions contained in the technical or commercial documentation of Aginode is indicative only and shall not be binding on Aginode or be treated as constituting a representation on the part of Aginode.

The management of cables or protection tubes is done at the rear of the module whilst the management of the jumpers is performed at the front and on the rotation axis side.

POB 48 right axis elementary version pre-equipped with 48 LC

Characteristics

구조적 특성

| | |
|----------------|---------------|
| 색상 | RAL 9002 |
| Cabinet format | 19"/ETSI |
| Material | Steel painted |

치수

| | |
|----------------------|--------|
| Depth | 185 mm |
| Height | 50 mm |
| Splice number | 48 |
| Cable Diameter | 5 mm |
| Heightunit | 1 U |
| Number of connectors | 48 |

사용 특성

| | |
|---|-------------|
| 操作温度范围 | -25...70 °C |
| Minimum static operating bending radius | 30 mm |
| Packaging | Box |