

# Basement: Domino

## DOMINO 100 - SPLITTING AND PATCHING

**Aginode Ref:** 10236721

Up to 24 customers / 6 splitters Delivered with clamping accessories for 2 cables 24 SC/APC adapters 1 tray for the patchcords Rail + wall mounting kit

The Domino basement boxes range has been especially designed for FTTH networks, to provide a modular solution for node interconnection between the external network and the building distribution network.

Stacking several Domino boxes enables to liaise between several operator networks and each subscriber.

### The product range

The range is characterized by a universal housing, and various adaptable internal organisations according to the network configuration.

Module height	Adapters maximum number	Splitters maximum number
100mm	24xSC	6 splitters SOD
165mm	48xSC	12 splitters SOD
210mm	72xSC	6+12 splitters SOD

A unique organizer performs all the cable termination features (splicing, splitting and/or patching, with overlengths management), depending on its cassettes layout.

An integrated swiveling tray allows the management of patchcords overlengths.

For standby fibres management, a version called "Storage" is also available.

### Accessibility

The cable crimping is made outside of the box, and then the cable and its crimping plate are fixed in the box.

Quick door-dismantling and front patching enable easy access and identification for the connectors.

The product operation does not need any additional volume



### STANDARDS

Aginode specification  
Orange/France Telecom

All drawings, designs, specifications, plans and particulars of weights, size and dimensions contained in the technical or commercial documentation of Aginode is indicative only and shall not be binding on Aginode or be treated as constituting a representation on the part of Aginode.

after the product installation. Thus, its accessibility is guaranteed whatever the evolution of the installation environment.

#### Interconnection and security

Domino is fully compatible with equivalent modules on the market.

2 communication chimneys allow the fibres to go from a module to another one in the same stack.

The door is secured with a standard 8mm triangular key. The standard organizer has the same security system.

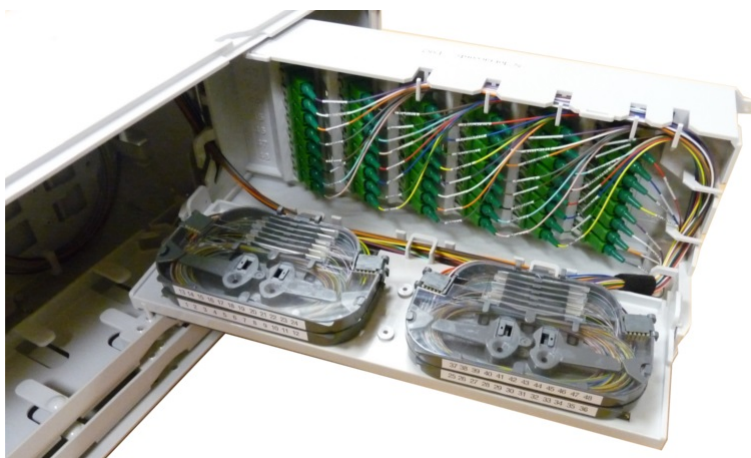
### **Domino Basement box**

With front patching and swivelling tray to manage patchcords overlentghs, Domino basement boxes are easy to use without "spaghetti" issues (melting, node) on the right column.

### **Domino stack for Basement box use**



### **Domino Splicing & Patching: version with splicing cassettes for G657 fibres for connection to riser or point to point**



*All drawings, designs, specifications, plans and particulars of weights, size and dimensions contained in the technical or commercial documentation of Aginode is indicative only and shall not be binding on Aginode or be treated as constituting a representation on the part of Aginode.*

**Domino Splitting & Patching: version dedicated for use of splitter (SOD type) in case of point to multipoints/GPON network**



**Domino Splitting & Patching: view of cassette to splice trunks of splitters (compatible G652 fibre, up to 12 splices)**



**Domino Storage: version dedicated to use and storage of a preterminated riser cable**



*All drawings, designs, specifications, plans and particulars of weights, size and dimensions contained in the technical or commercial documentation of Aginode is indicative only and shall not be binding on Aginode or be treated as constituting a representation on the part of Aginode.*

# Domino 100 - Splitting and patching

## Characteristics

### 구조적 특성

색상	담회색 RAL 7035
Cable entry	왼쪽부터
Material	플리카보네이트

### 치수

Depth	150 mm
Height	100 mm
Width	450 mm
Number of connectors	24
External diameter of the cable "D", range	6...14 mm

### 기계적 특성

IK Rating	7
-----------	---

### 사용 특성

操作温度范围	-25...70 °C
Adaptor	SC/APC
Fire resistant	UL 94 V0
Number of ports	3
Minimum static operating bending radius	15 mm
Locking system	Triangle
U.V resistance	Yes
Packaging	Box
Watertightness	IP 41

### 문서

Domino Implementation Manual (french) pdf — 12.7 MB [다운로드](#) ↓

### 판매 및 배송 정보

Up to 48 dwellings / 12 splitters Includes all accessories for crimping 3 cables 48 SC/APC adapters 2 trays for patchcords overlenghts

All drawings, designs, specifications, plans and particulars of weights, size and dimensions contained in the technical or commercial documentation of Aginode is indicative only and shall not be binding on Aginode or be treated as constituting a representation on the part of Aginode.