

# LANmark-OF Snap-In Adaptor

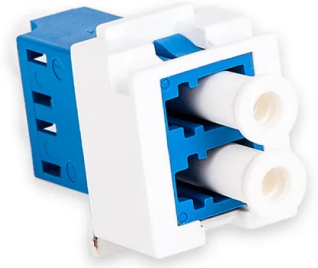
## LANMARK-OF DUPLEX LC SNAP-IN ADAPTOR SINGLEMODE

**Aginode Ref:** N205.627

LANmark-OF Snap-In adaptors have been designed for installation into the LANmark-OF snap-in panels, ZD boxes and outlets.

They are available in single SC, duplex SC and duplex LC duplex. The multimode adaptors are aqua, the singlemode adaptors are blue while the singlemode APC adaptors are green.

Installation time is saved as the snap-in concept replaces the time-consuming screwing attachment of the traditional adaptors.



### STANDARDS

ISO/IEC 11801

# LANmark-OF Duplex LC Snap-In Adaptor Singlemode

## Characteristics

### Construction characteristics

Colour	Blue
Connector type	LC

### Transmission characteristics

Insertion Loss, maximum, dB	0.4 dB
-----------------------------	--------

*All drawings, designs, specifications, plans and particulars of weights, size and dimensions contained in the technical or commercial documentation of Aginode is indicative only and shall not be binding on Aginode or be treated as constituting a representation on the part of Aginode.*