

Schaltschränke und Rahmen für Rechenzentren

LANMARK OVER HEAD PATCH FRAME 4U BLACK

Aginode Ref: N345.400BCH

- 19-Inch mounting equipment for high-density cross-connect
- Ideal in Datacenters
- Designed to host both Copper and Fibre cabling
- Robust metal construction
- Enhanced access and cord management

Application

LANmark High-Density racks and frames have been designed to host busy Cross-Connects in datacenters. Specific attention has been given to technical constraints of datacenters such as cooling and space scarcity. Numerous features contribute to an optimal space utilisation and enable installation on busy datacenter floors. These High-Density racks and frames enable excellent front, rear and lateral access. This is of great importance during installation but also during maintenance and upgrade operations. Proper management of large numbers of cords and securing clarity is critical for datacenters management and reliability over the life time. Examples of equipment that can be hosted in LANmark High-Density rack and frames are given below:

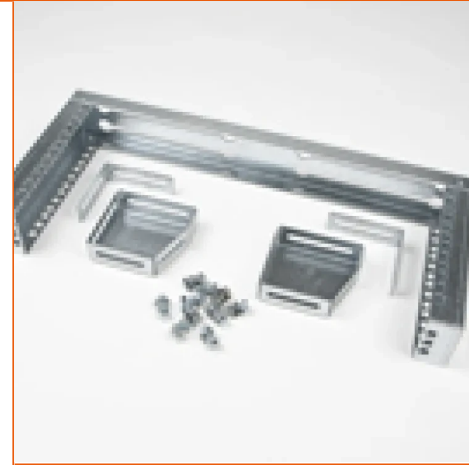
- Angled panels and accessories
- High Density Fibre optic panels
- MPO panels
- LANSense - Intelligent patching
- Suitable for Cat.6A, 7 and 7A
- Suitable for OM3, OM4 and OS2
- future Cat 6A and Class EA applications
- EMAC - Environmental control

Performance

LANmark High-Density racks and frames have been designed to host all LANmark fibre optic and copper products.

Installation

Aginode LANmark-6 feature accessories and bracket enabling the installation in various configuration and location of a



STANDARDS

ISO/IEC 24764
ISO/IEC 11801:2002/Amd
2:2010/Cor 1:2010

All drawings, designs, specifications, plans and particulars of weights, size and dimensions contained in the technical or commercial documentation of Aginode is indicative only and shall not be binding on Aginode or be treated as constituting a representation on the part of Aginode.

datacenter. please see the datasheet of the main products for details.

Guarantees

Aginode LANmark High-Density Rack and Frames are covered by a parts and labour warranty as described in the Aginode Certified System Warranty.

All drawings, designs, specifications, plans and particulars of weights, size and dimensions contained in the technical or commercial documentation of Aginode is indicative only and shall not be binding on Aginode or be treated as constituting a representation on the part of Aginode.

LANmark Over Head Patch frame 4U Black

Eigenschaften

Konstruktionsmerkmale

Werkstoff	Steel
Schaltschrankformat	19"
Farbe	Schwarz

Abmessungsmerkmale

Breite	525 mm
Tiefe	70 mm
Nettogewicht, ca.	2.5 kg
Höhe	325 mm
Einheitshöhe	4 U

Mechanische Eigenschaften

Belastbarkeit	10 kg
---------------	-------

Anwendungsmerkmale

Verpackung	Box
Einsatzbereich	Data Centre
Schaltschrankmodell	Cross-Connect
Bereich	LANmark
Wasserdicht	Nein