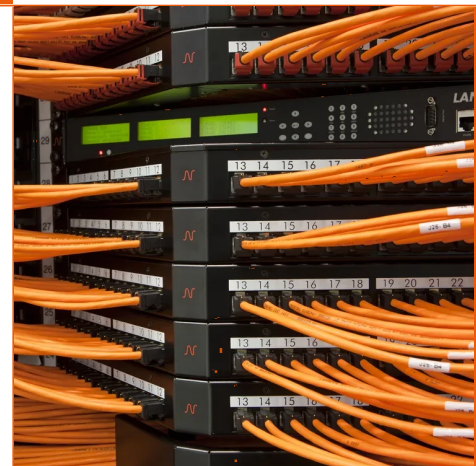


LANsense NGA Copper Patch Panels

- - LANsense Intelligente Patch-Panels
- - Modulares 24 Ports Snap-In-Patchfeld
- - Kompatibel mit LANmark EVO Anschlussmöglichkeiten
- - LANmark EVO Modulare Steckverbinder sind separat erhältlich
- - Erdungs- und Massefunktionen mit exklusiven Aginode-Design
- - Kompatibel mit Cat 6, Cat 6A, Cat 7A Steckverbindern

LANsense Kupfer-Patch-Panels verfügen über eine eingebaute Intelligenz, die solange inaktiv bleibt, bis sie von LANsense-Analysatoren und -Software aktiviert wird. Die Panels verfügen über eingebaute Sensoren zur Erkennung des Verbindungsstatus jedes Ports und einen E/A-Anschluss zur Verbindung mit den Analysatoren.







Das aus Stahl gefertigte Panel bietet einen robusten, hochdichten Befestigungsmechanismus für modulare Aginode-Steckverbinder.


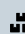


STANDARDS

ISO/IEC 11801

Product list

	Aginode ref.	Country ref.	Name
	N881.675	-	LANsense Angled Panel 24 Snap-In White
	N881.3112P	-	LANsense Interconnect Modular Snap-In Patch Panel
	N881.411	-	LANsense Empty Sliding Patch Panel for 24 Snap-In connectors, Black
	N881.311	-	LANsense Panel 24 Snap-In Black
	N881.671	-	LANsense Angled Panel 24 Snap-In Black
	NLS3.CU24B	-	LANsense TGA Copper Patch Panel

 = Make to order,  = In Stock

All drawings, designs, specifications, plans and particulars of weights, size and dimensions contained in the technical or commercial documentation of Aginode is indicative only and shall not be binding on Aginode or be treated as constituting a representation on the part of Aginode.